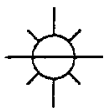
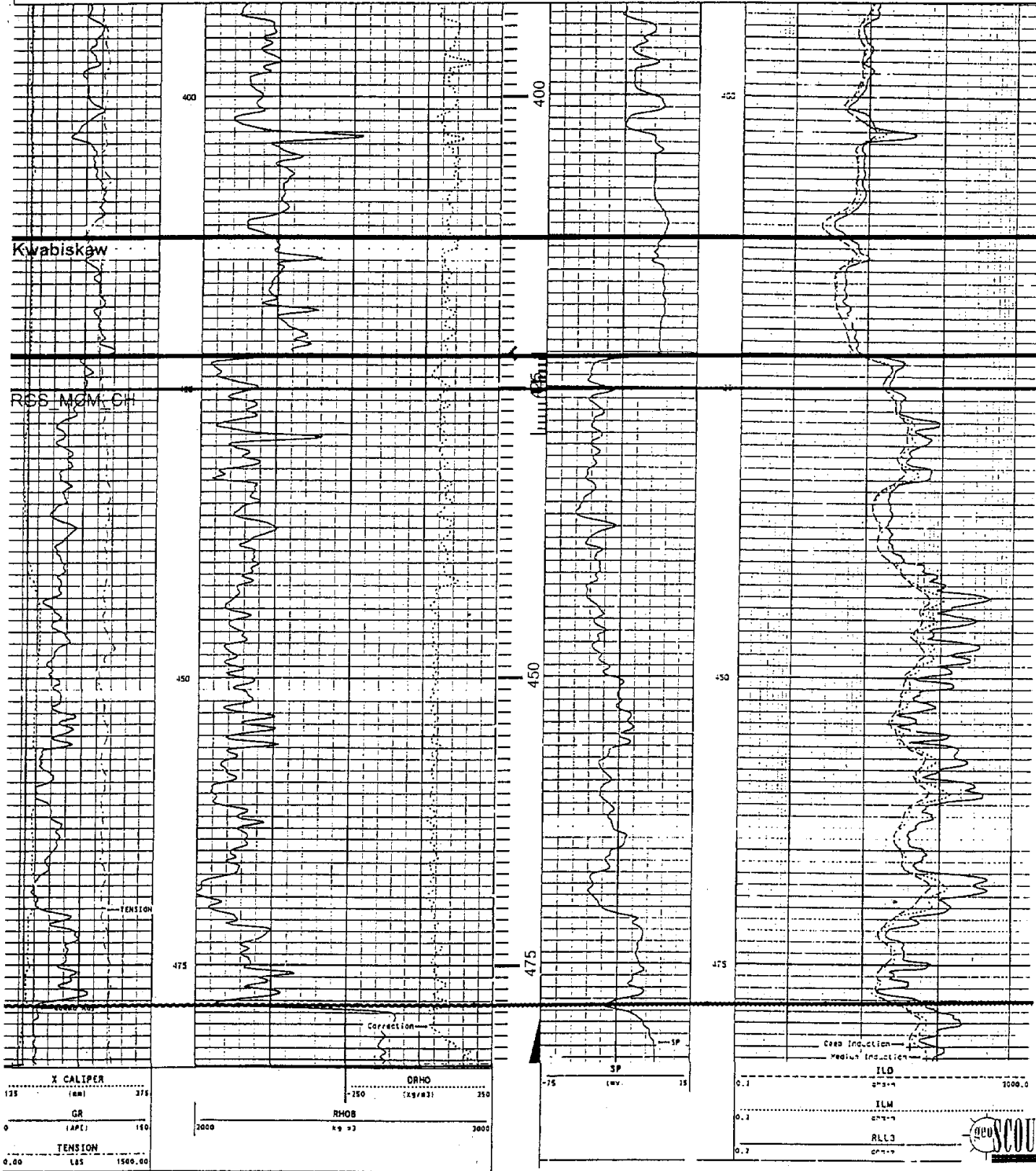


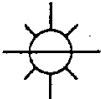
| | | |
|---------------------------|--|--------------|
| X CALIPER (in) | | 375 |
| Y CALIPER (in) | | 375 |
| GR (API) | | 150 |
| TENSION (lbs) | | 1200 |
| DEN. POROSITY (SS) | | X Porosity 0 |
| NEUT. POROSITY (SS) | | X Porosity 0 |
| ORHO (Kg/m ³) | | 250 |

| | | |
|-----------|--|--------|
| SP (psi) | | 70 |
| ILO (in) | | 1000.0 |
| ILM (in) | | 1000.0 |
| ALL3 (in) | | 1000.0 |

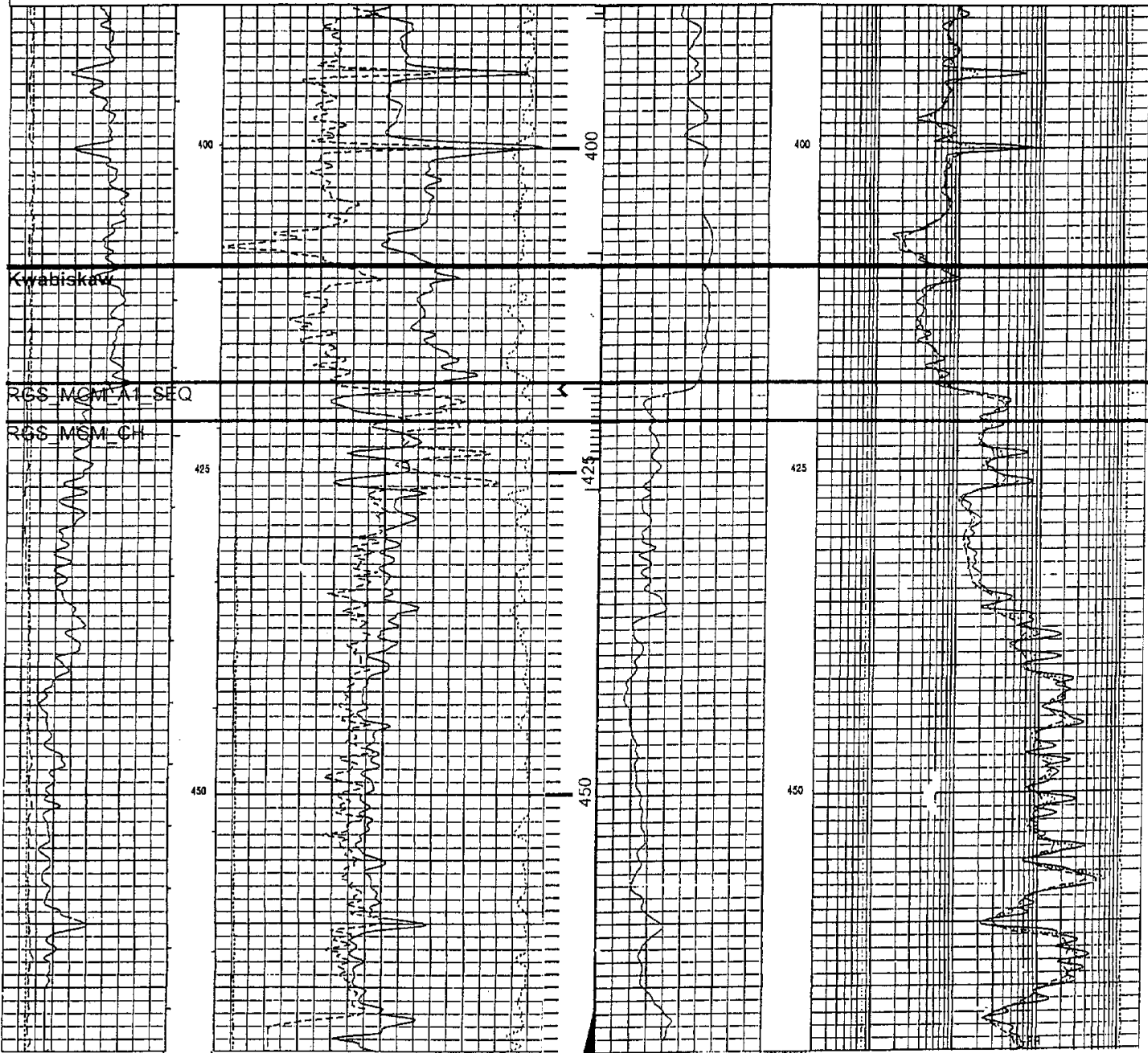


MCMURRAY A





MCMURRAY Q



Kvabiskaw

RGS MOWFA1 SEQ

RGS MSM CH

| | |
|--------------------------|-----|
| Bit Size (BS) (MM) | 375 |
| Caliper (CAL) (MM) | 375 |
| Gamma Ray (GR) (GAPI) | 150 |

| | |
|--|-----------|
| Density Porosity (DPHI) (PU) | 0 |
| Alpha Processed Neutron Porosity (NIPOR) (PU) | 0 |
| Tension (TEHS) (I) | 50000 450 |
| Bulk Density Correction (DRHC) (K/M3) | -30 |

PIP SUMMARY
 - Integrated Hole Volume Minor Pip Every 0.1 M3
 - Integrated Hole Volume Major Pip Every 1 M3
 - Integrated Cement Volume Minor Pip Every 0.1 M3
 - Integrated Cement Volume Major Pip Every 1 M3

Time Mark Every 60 S

472.0m

SP (SP)
(MV)

NO QUAL
From
IMGF to
ICP

IM QUAL
From
BFGF to
IMGF

SFL
QUAL
From DAT
In SEQ

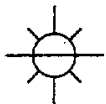
Deep Induction Resistivity (IDPH)
(OHMM)

Medium Induction Resistivity (IMPH)
(OHMM)

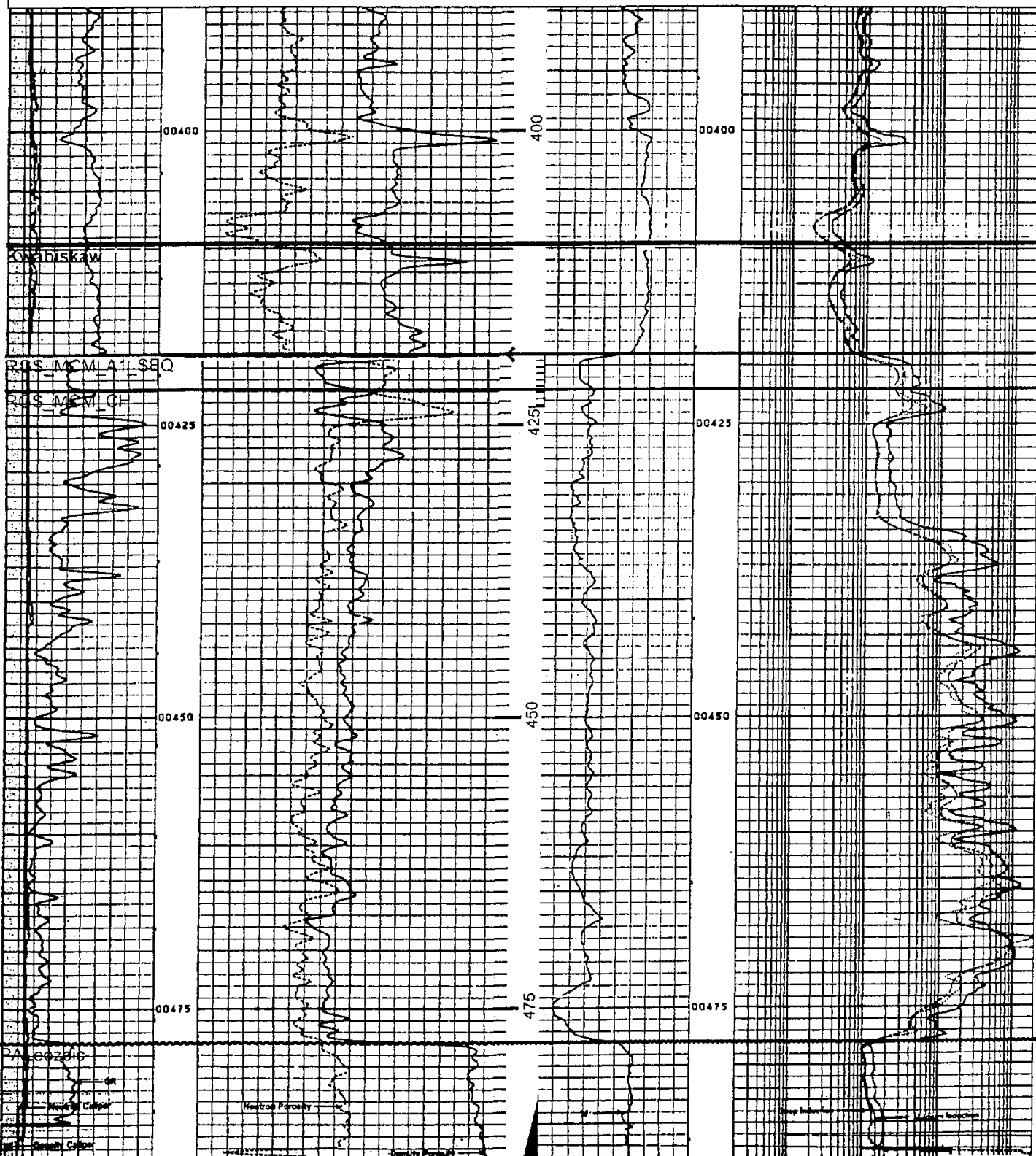
SFL Unaveraged (SFLU)
(OHMM)

Tension
(I)





MCMURRAY Q



| | |
|----------------|-----|
| LOG BIT (IN) | 375 |
| LOG CAL-Y (MM) | 375 |
| LOG CAL-K (MM) | 375 |
| GR (API) | 150 |

| | | |
|-----------|----------|-----------|
| SANDSTONE | | TD 488.0m |
| SO | φ-CNS.SD | 0 |
| SO | φ-CDL | 0 |
| SO | SP (MV) | 40 |

| | | |
|-----|-------------|------|
| 0.2 | R-LL (Q-MI) | 2000 |
| 0.2 | R-ILN(Q-MI) | 2000 |
| 0.2 | R-ILD(Q-MI) | 2000 |



