

00/10-33-073-08W4/0

KB: 700.0 m
TD: 550.0 m
Mode: Abnd
RR: 1982-02-01
FormTD: MOBERLY
Fluid: Gas
PEX KIRBY 10-33-73-8



15.0m to next well >

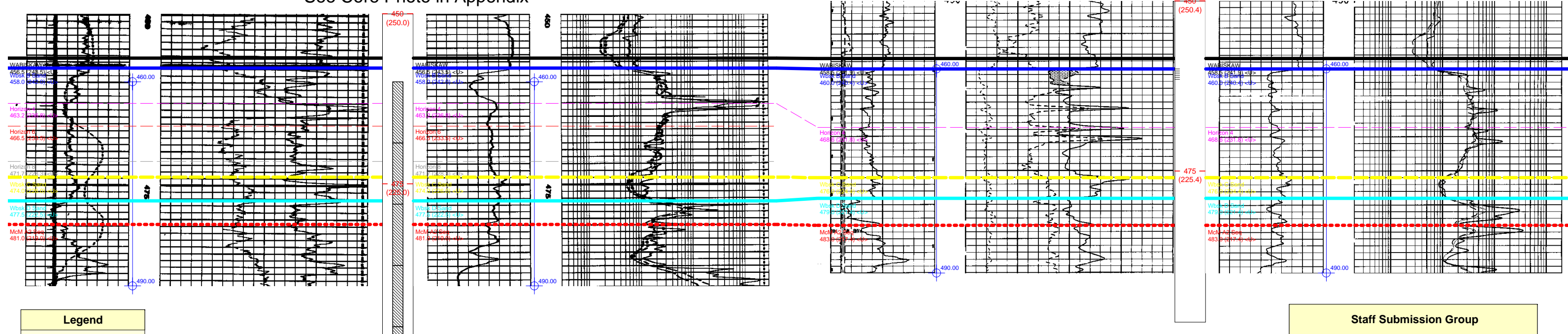
02/10-33-073-08W4/0

KB: 700.4 m
TD: 543.0 m
Mode: Susp
RR: 1994-02-19
FormTD: WOODBEND
Fluid: Gas
RAX ET AL KIRBY 10-33-73-8

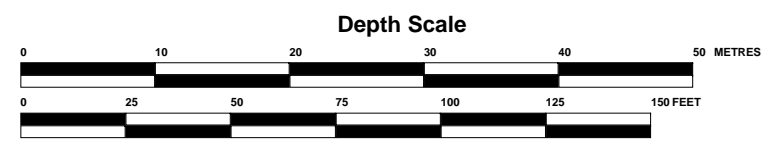


< 15.0m to previous well

See Core Photo in Appendix



Legend	
	Abnd Gas Well
	Susp Gas Well
	Contact Type - Conformity
	Contact Type - Unconformity
	Contact Type - Time Equivalence
	Contact Type - Left Fault
	Contact Type - Right Fault



Staff Submission Group

Kirby Area
Wabiskaw Marker to Wabiskaw B Valley-fill Base
Stratigraphic Cross-section
73-8W4

Produced by:
AcuLogs Cross Section
version 7.1.2.0

Author:
Modified On: Wednesday, May 04, 2005 01:21PM
Printed On: Wednesday, May 04, 2005 01:21PM
Start Formation: 5m. above WABISKAW
End Formation: 5m. below WABISKAW D
Cross Section Name: KIRBYDD