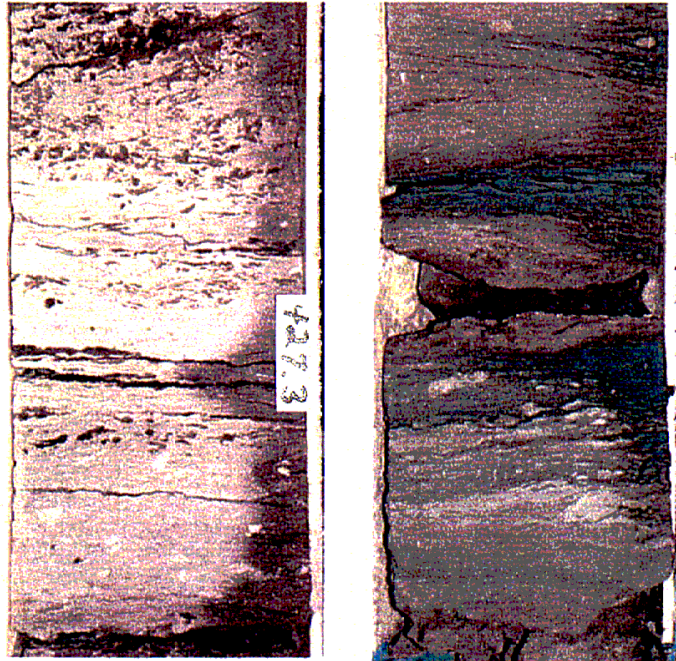


Figure 1: Base Map of Pool and Wells

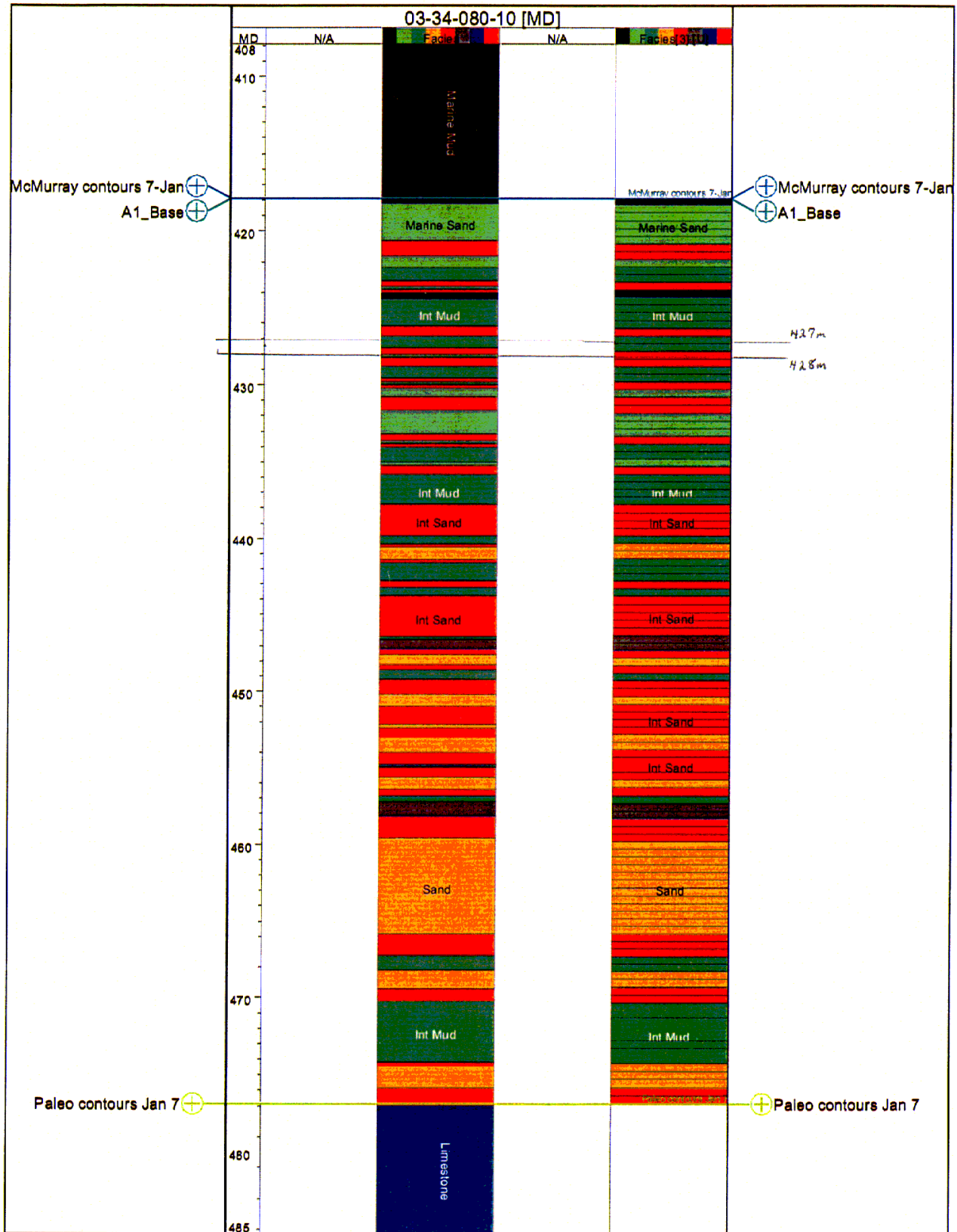
2. Marine Mud: regionally developed but prone to erosion by autocyclic or allogenic processes. This facies is interpreted as having been deposited following a transgressive event.

3-34-80-10W4



Marine Mud: burrowed silty mud,
dominantly *Teichichnus* and *Helminthopsis*

Figure 9: Core Photo of Marine Mud



Lithological column for well 03-34-080-10 - original and upscaled logs (meter MD)

6. **Mud Breccia (in Sand Matrix)** : this facies is extremely localised (but may recur in distinct stratigraphic zones), and represents bank collapse debris or rip-up clasts.

3-34-80-10W4 9-29-81-9W4



Breccia: mud clasts in sand matrix

Figure 13: Core Photo of Mud Breccia in Sand Matrix