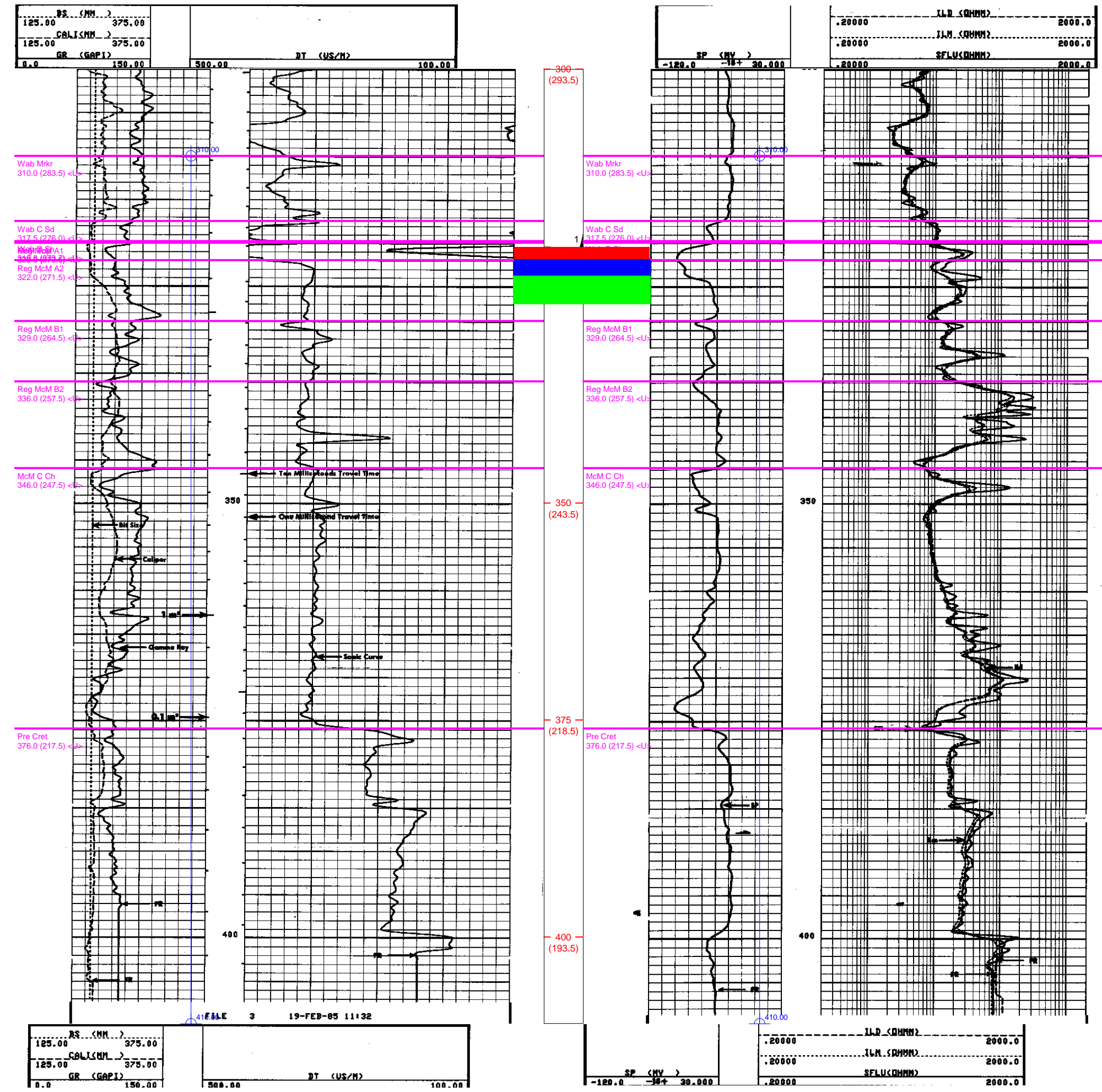


00/11-33-079-07W4/0

KB: 593.5 m RR: 1985-02-20  
 TD: 406.0 m FormID: BHL  
 Mode: Test Fluid: N/A  
 RAX PCEJ CHARD 11-33-79-7

> 3122.0m to next well



DST Information

1. 319.0-323.0 (Wab Mkr)  
 Type: STRADDLE  
 VO: 5.0/60.0 SI: 60.0/120.0 min  
 FP: 1371.0/1409.0 kPa  
 SIP: 1752.0/1752.0 kPa  
 RP: 3401.0/3491.0 kPa  
 \*GTS TSTM: RBOS: 22.0M( 72')- FRWTR:\*

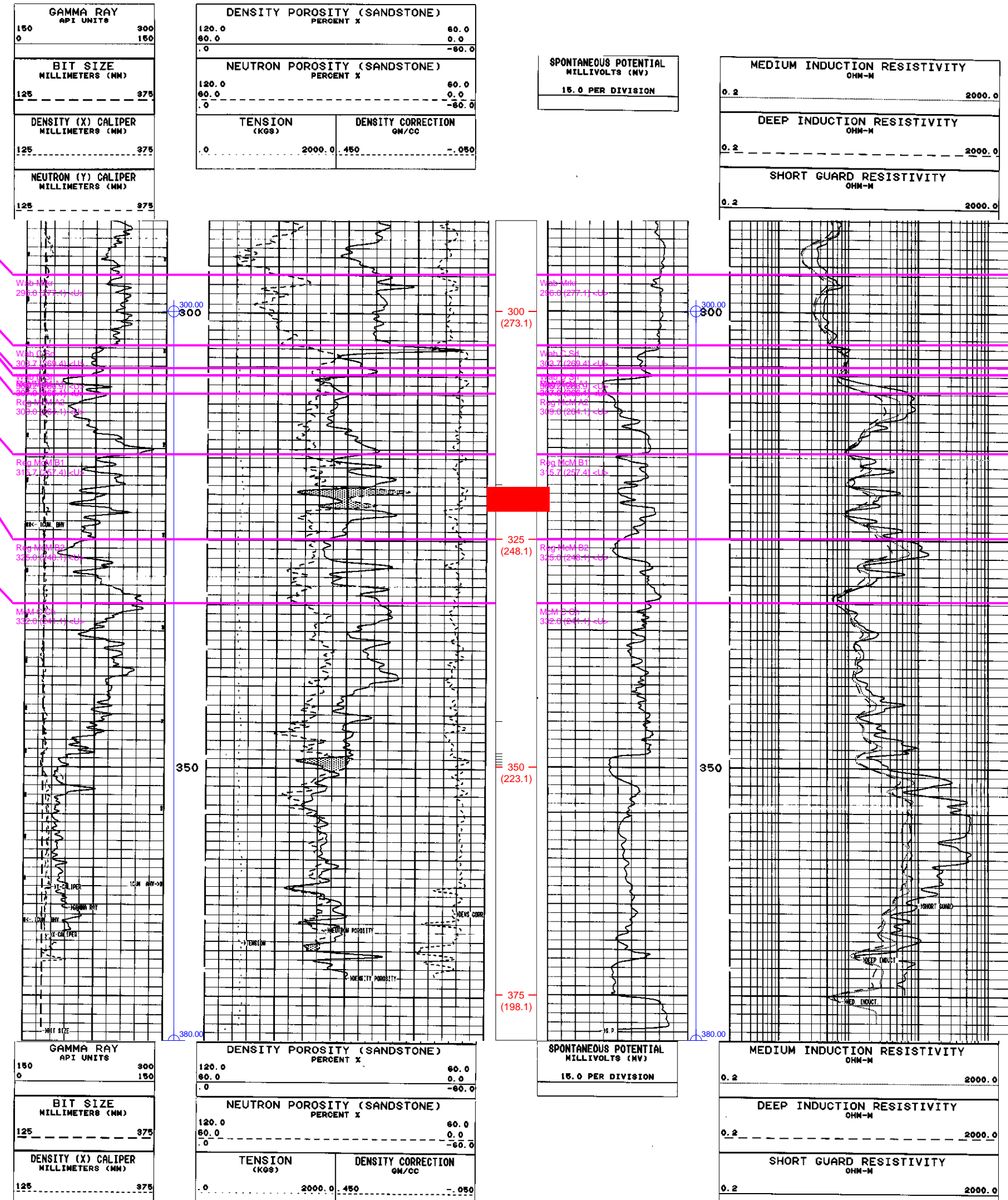
2. 320.5-321.8 (McM Top)  
 Type: IP - PRODUCTION  
 VO: 0.0/0.0 SI: 0.0/0.0 min  
 FP: 1345.0/1345.0 kPa  
 SIP: 0.0/0.0 kPa  
 RP: 0.0/0.0 kPa  
 \*GTS MAX 33000 M3/D (1.165 MMCF/D): VO 1. HRS:\*

Prod	Oil (m3)	Gas (B3m3)	Water (m3)
Cum	0.0	30.0	1.0
Daily	0.0	32.7	1.1

00/12-35-079-07W4/0

KB: 573.1 m RR: 1994-02-01  
 TD: 376.0 m FormID: McM Top  
 Mode: Susp Fluid: Gas  
 RAX ET AL CHARD 12-35-79-7

< 3122.0m to previous well

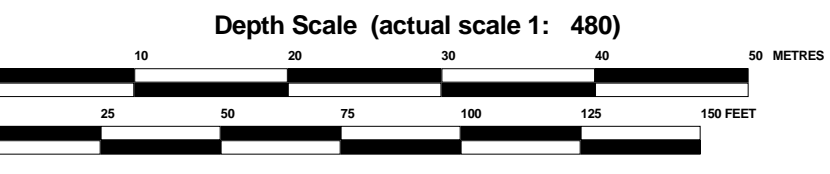


DST Information

Prod	Oil (m3)	Gas (B3m3)	Water (m3)
Cum	0.0	22252.1	539.9
Daily	0.0	9.8	0.2

### Legend

- Test N/A Well
- ⊗ Susp Gas Well
- Contact Type - Conformity
- Contact Type - Unconformity
- Contact Type - Time Equivalence
- Contact Type - Left Fault
- Contact Type - Right Fault



## CNRL

Figure 21. Chard Structural Cross Section

Produced by:  
Acrolaps Cross Section  
version 7.1.2.0

Author: Waterfield  
 Modified On: Wednesday, May 04, 2005 03:33PM  
 Printed On: Wednesday, May 04, 2005 03:33PM  
 Start Formation: 5m above WBSR  
 End Formation: 5m below Total Depth  
 Cross Section Name: LEISMERC