

APPENDIX 1

Open Hole Logs and PEOC Petrel Input Data

For Selected PEOC Corner McMurray C Pool Study Wells

100/14-28-080-10W4

100/05-35-080-10W4

100/03-03-081-10W4

100/03-36-080-10W4

100/10-11-081-10W4

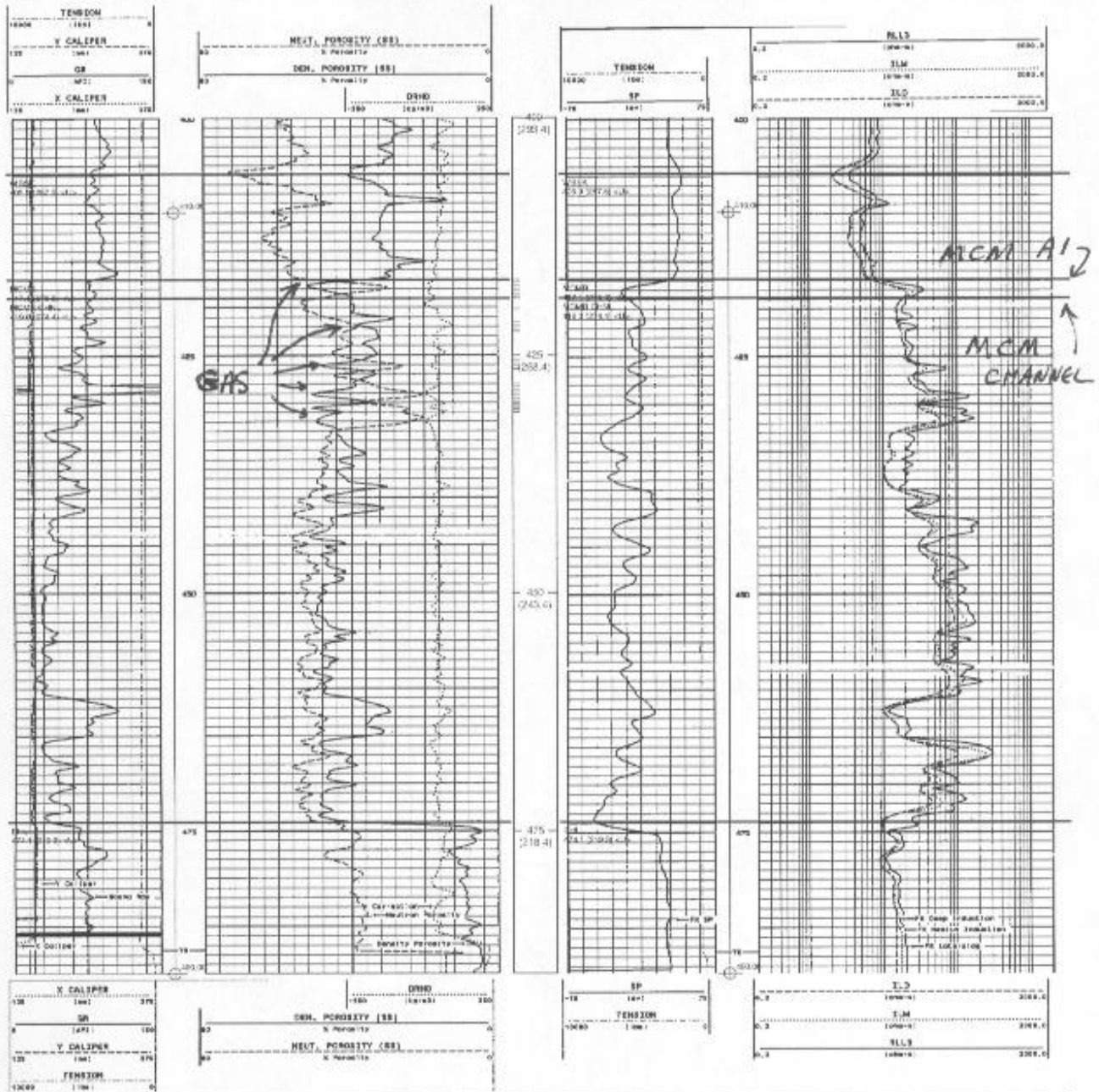
100/08-04-081-10W4

100/09-33-080-10W4

100/11-34-080-10W4

00/14-28-080-10W4/0

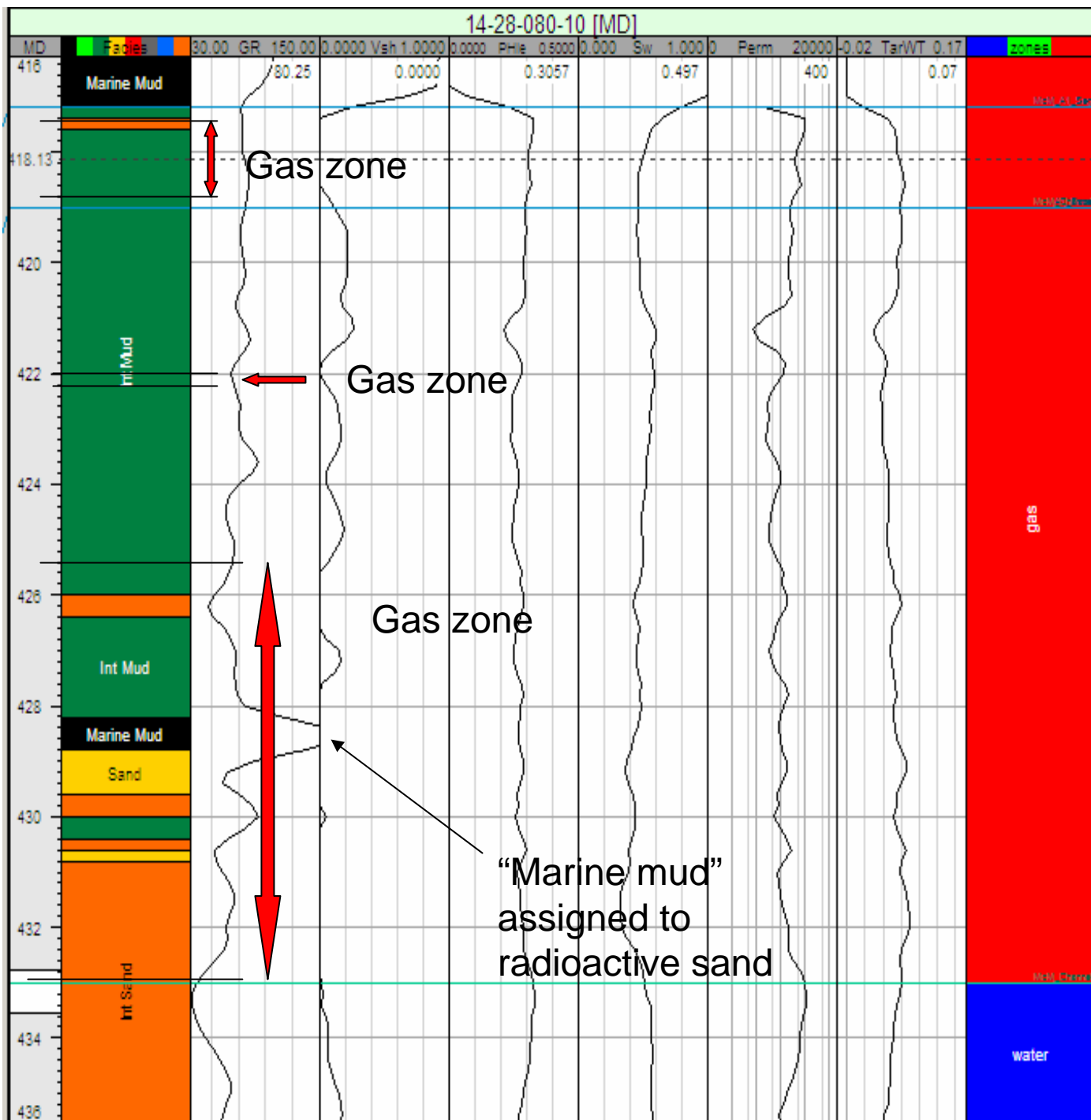
KB: 693.4 m RR: 1993-12-29
 TD: 487.0 m FormTD: BHL
 Mode: Susp Fluid: Gas
 PARA ET AL CORNER 14-28-80-10



DST Information

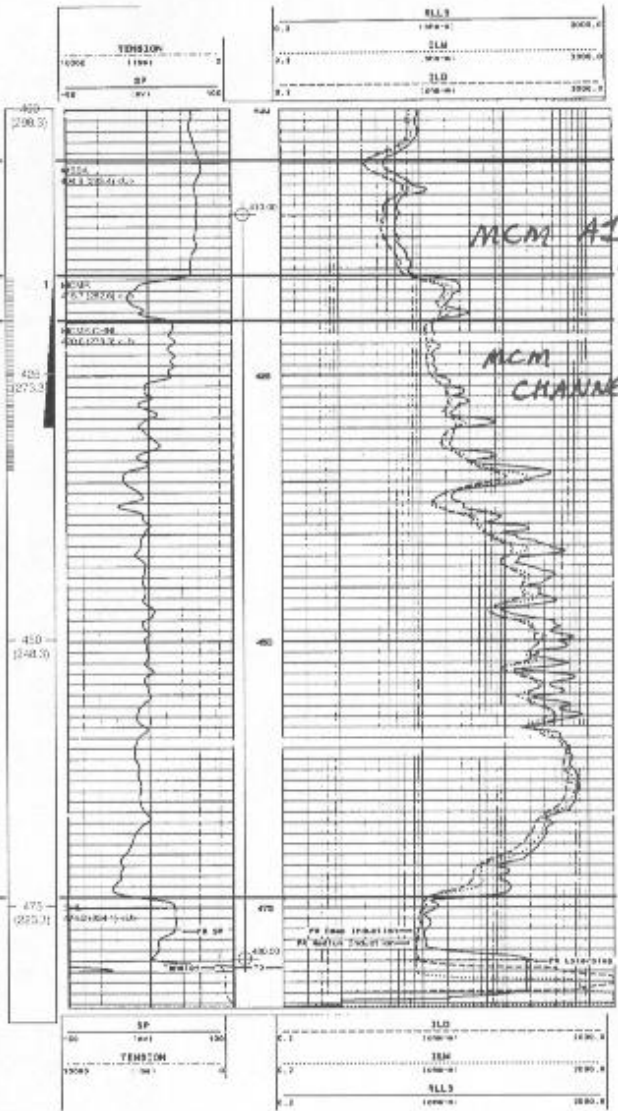
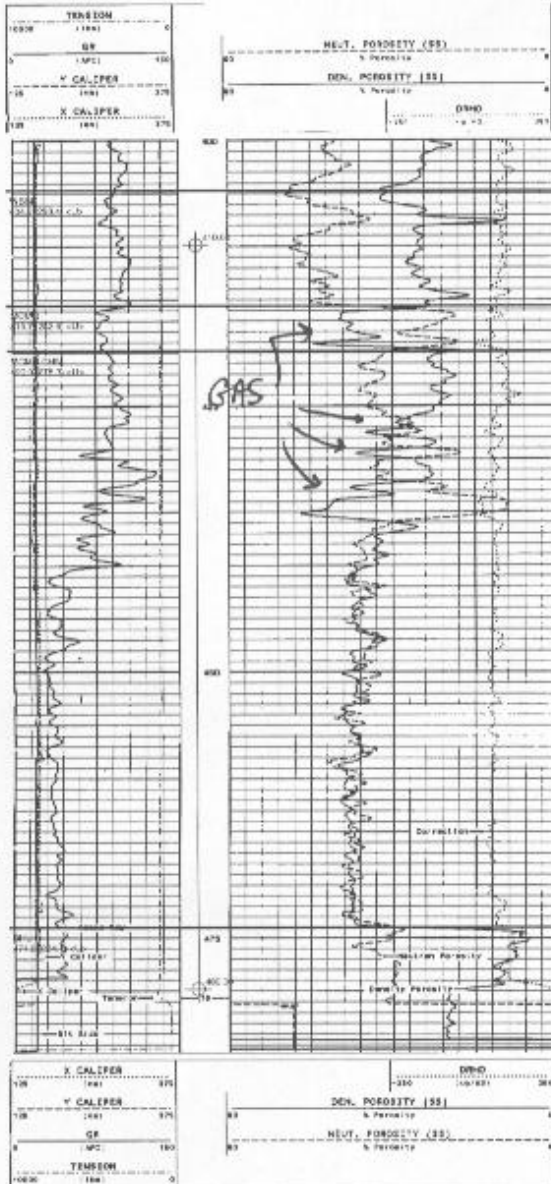
Prod	Oil (m3)	Gas (B3m3)	Water (m3)
Cum	0.0	113805.4	13338.3
Daily	0.0	32.7	3.8

Petrel input for 100/14-28-80-10W4 showing PEOC facies designation and log analysis.



00/05-35-080-10W4/0

KB: 695.3 m RR: 1993-12-31
 TD: 490.0 m FormTD: BHL
 Mode: Susp Fluid: Gas
 PARA ET AL CORNER 5-35-80-10

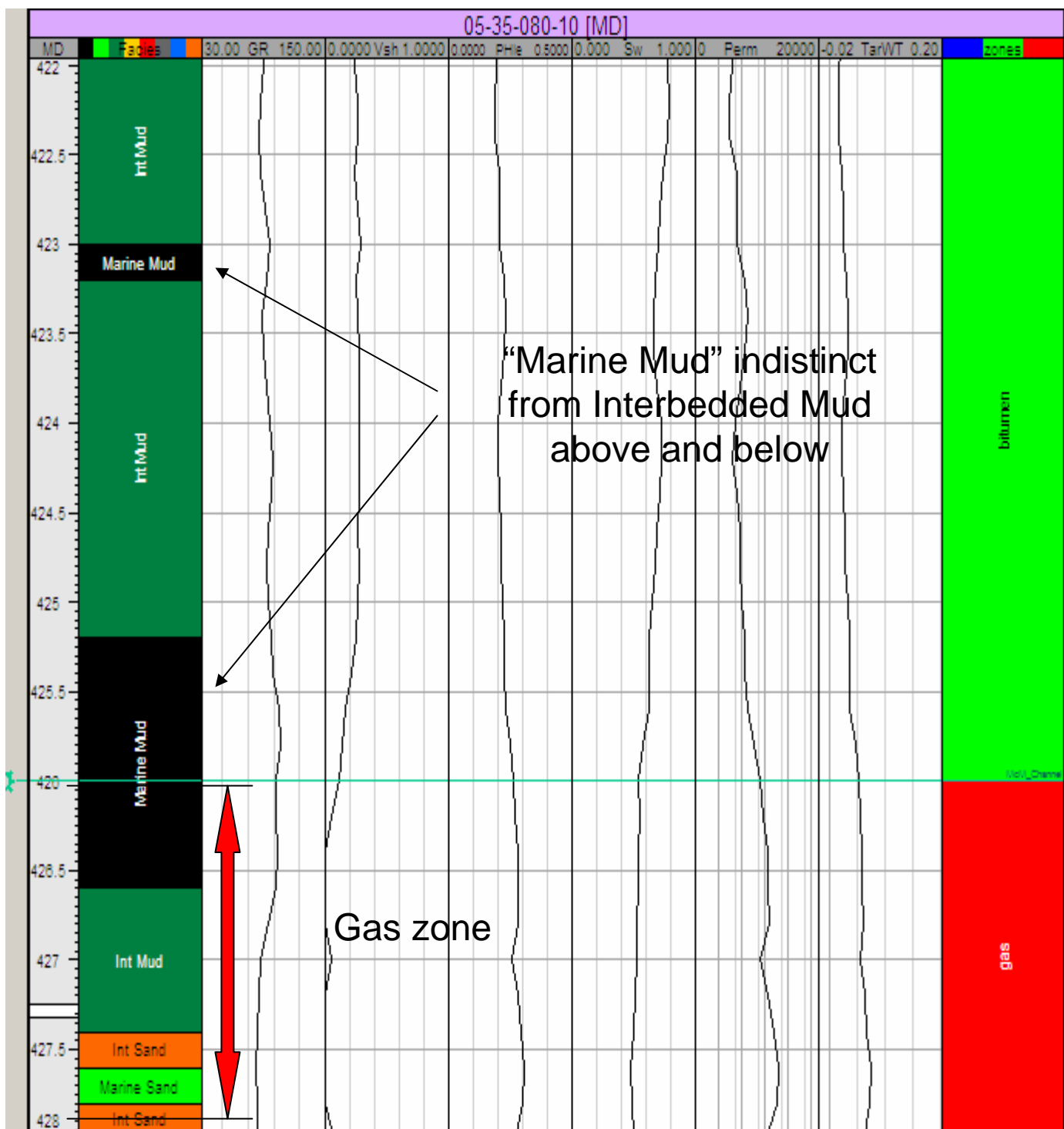


DST Information

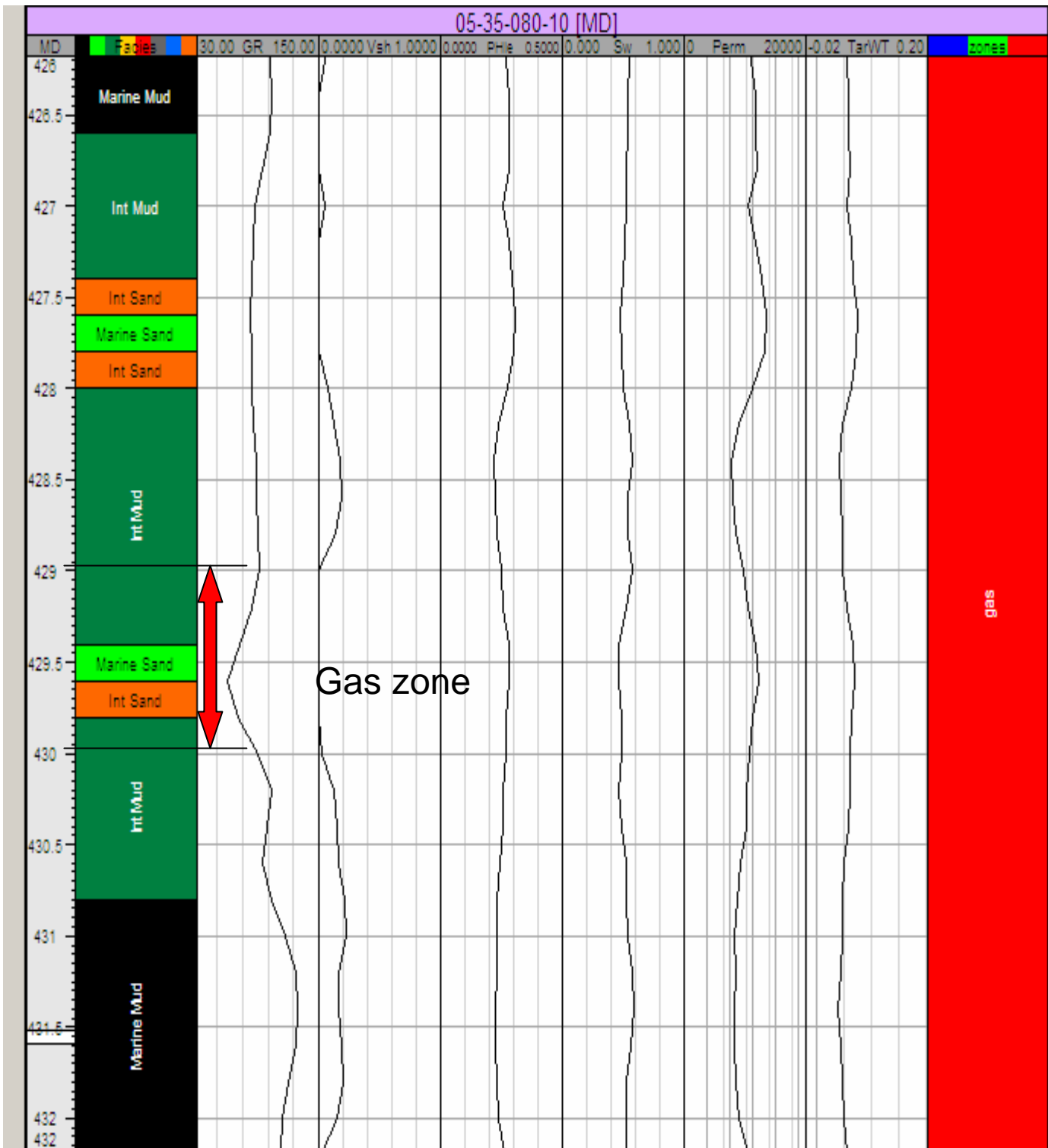
1. 416.0-430.0 INCMR1
 Type: IP - PRODUCTION
 VO: 0.0/0.0 SI: 0.0/0.0 min
 FP: 1551.0/1551.0 kPa
 SIP: 0.0/0.0 kPa
 H2: 0.0/0.0 kPa
 2.1 ML/M3 LIQ,

Prod	Oil (m3)	Gas (E3m3)	Water (m3)
Cum	0.0	153086.0	930.7
Daily	0.0	43.3	0.3

Petrel input for **100/05-35-80-10W4** showing PEOC facies designation and log analysis; upper section.



Petrel input for 100/05-35-80-10W4 showing PEOC facies designation and log analysis; lower section.



00/03-03-081-10W4/0

KB: 698.2 m RR: 1985-01-25
 TD: 491.0 m FormTD: BHL
 Mode: Abnd Fluid: N/A
 CWWE HANGST 3-3-91-10

RES. (CM) ...	275.00	250.0	250.00
DEPTH ...	126.00	0.0	18.000
DEPTH ...	275.00	0.0	0
DR. (CM) ...	136.00	0.0	0

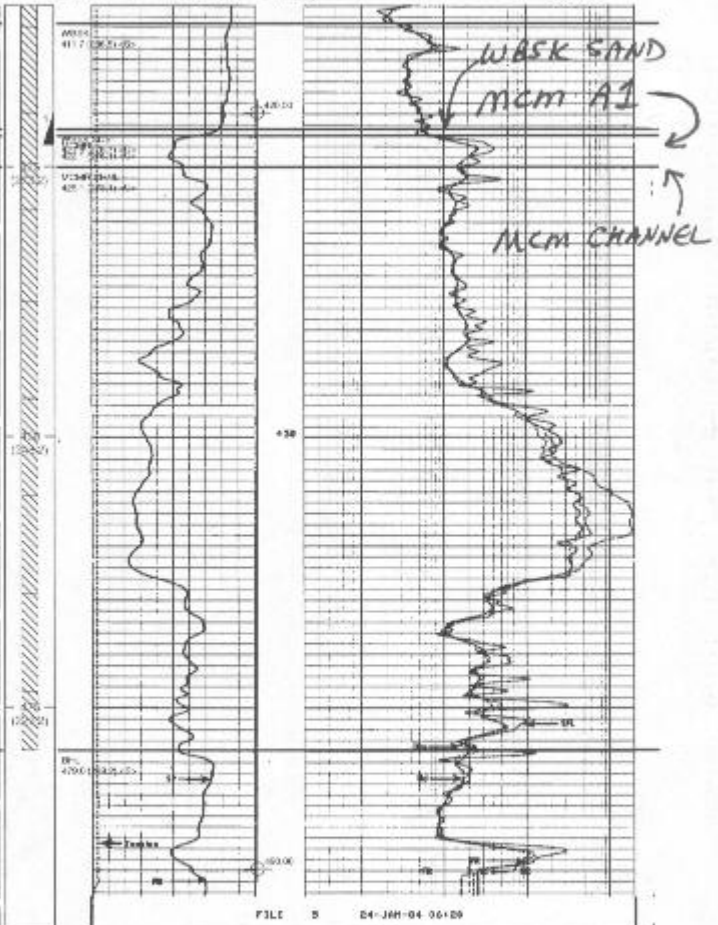
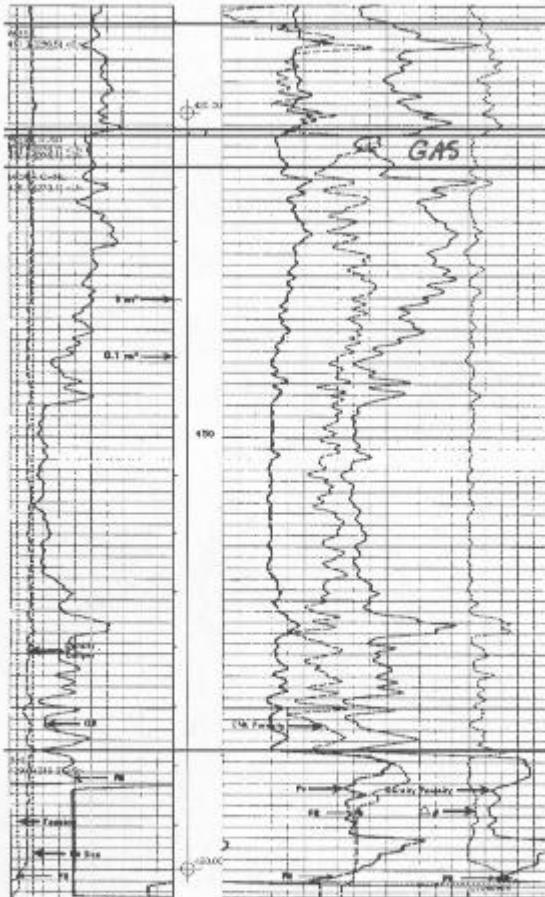
SANDSTONE

FILE 103 04-JAN-04 08:00
 DATE ACQUIRED 04-JAN-04 08:00

RES. (CM) ...	275.00	250.0	250.00
DEPTH ...	126.00	0.0	18.000
DEPTH ...	275.00	0.0	0
DR. (CM) ...	136.00	0.0	0

SANDSTONE

FILE 5 04-JAN-04 06:00



RES. (CM) ...	275.00	250.0	250.00
DEPTH ...	126.00	0.0	18.000
DEPTH ...	275.00	0.0	0
DR. (CM) ...	136.00	0.0	0

SANDSTONE

FILE 103 04-JAN-04 08:00
 DATE ACQUIRED 04-JAN-04 07:57

RES. (CM) ...	275.00	250.0	250.00
DEPTH ...	126.00	0.0	18.000
DEPTH ...	275.00	0.0	0
DR. (CM) ...	136.00	0.0	0

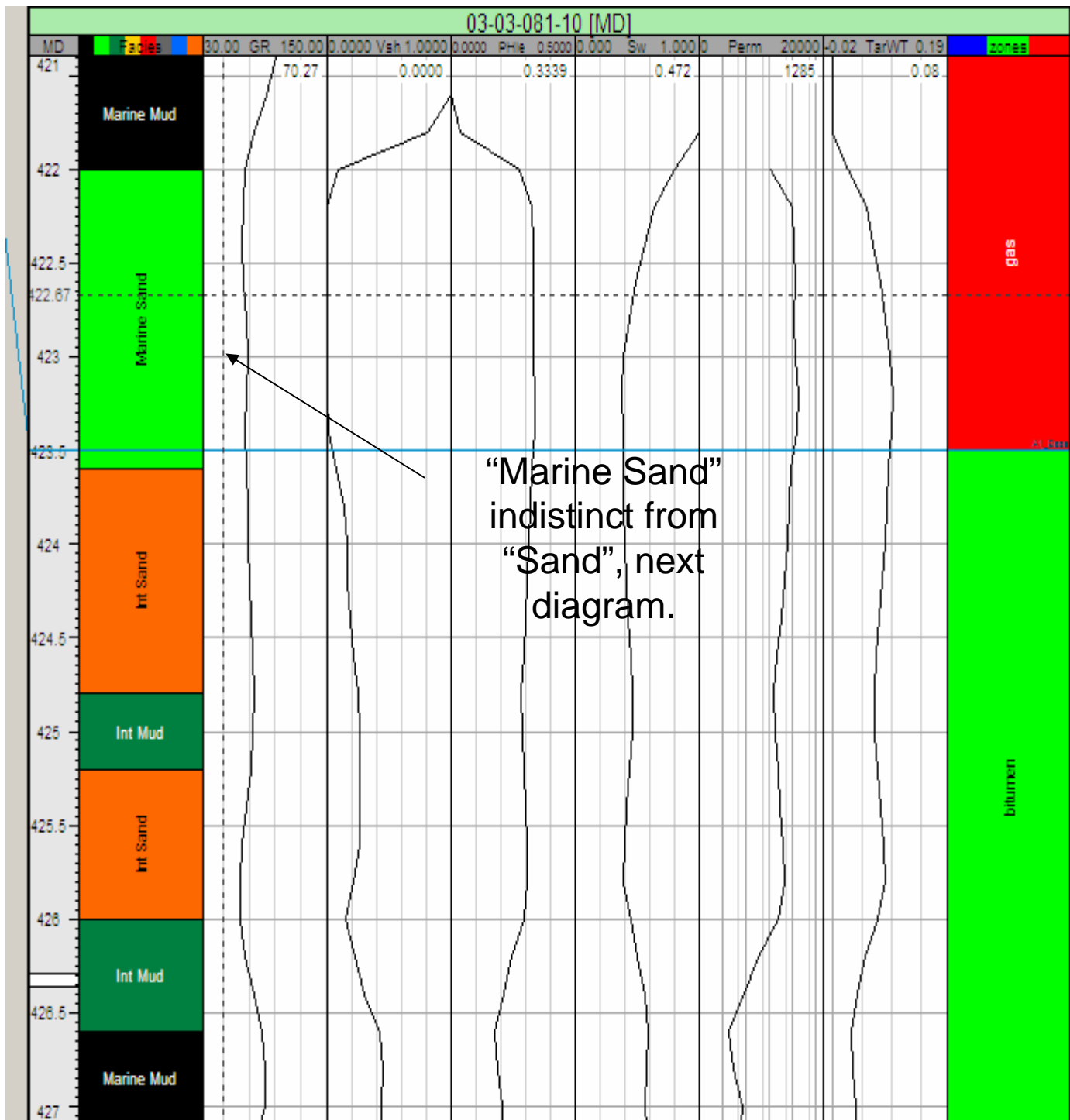
SANDSTONE

FILE 5 04-JAN-04 06:00

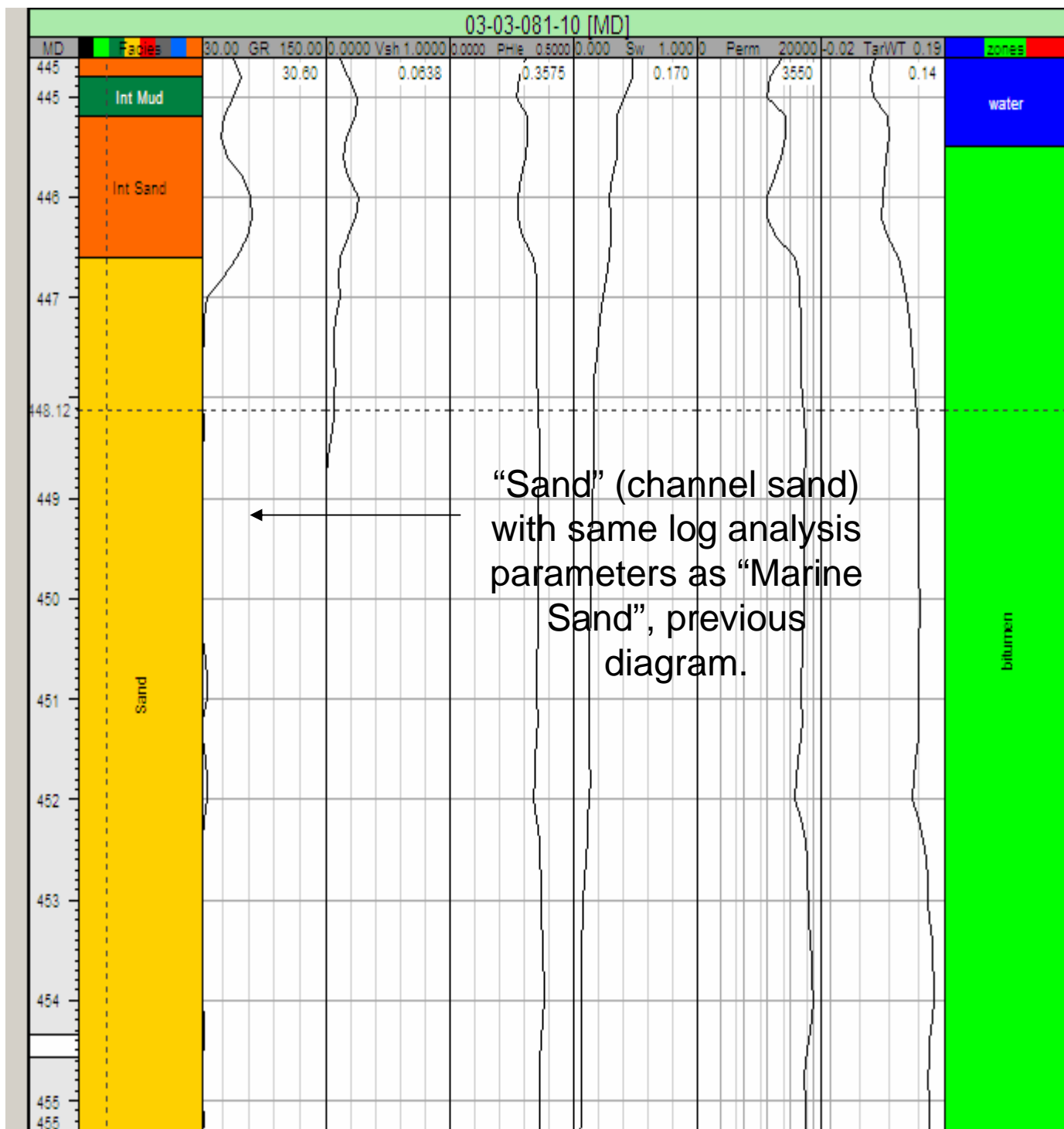
DST Information
 1. 420.0-423.0 (WBSK)
 Type: STRADDLE
 VO: 10.0/60.0 SI: 60.0/90.0 min
 FP: 674.0/633.0 kPa
 SIP: 2011.0/1975.0 kPa
 NP: 4559.0/4356.0 kPa
 *GTS MAX 5200 M3/D (1. 184 MMCF/D), FINAL 5200 M3/D (1. 184 MMCF/D);"

Prod	Oil (m3)	Gas (M3)	Water (m3)
Cum	0.0	0.0	0.0
Daily	0.0	0.0	0.0

Petrel input for 100/03-03-81-10W4 showing PEOC facies designation and log analysis; upper log section.

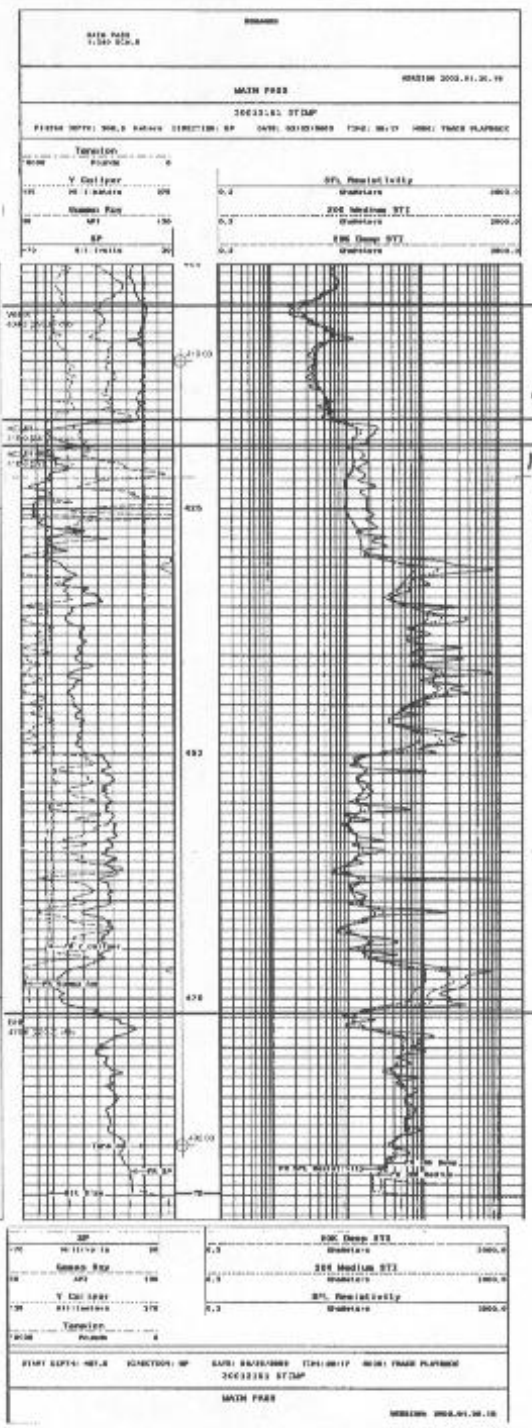
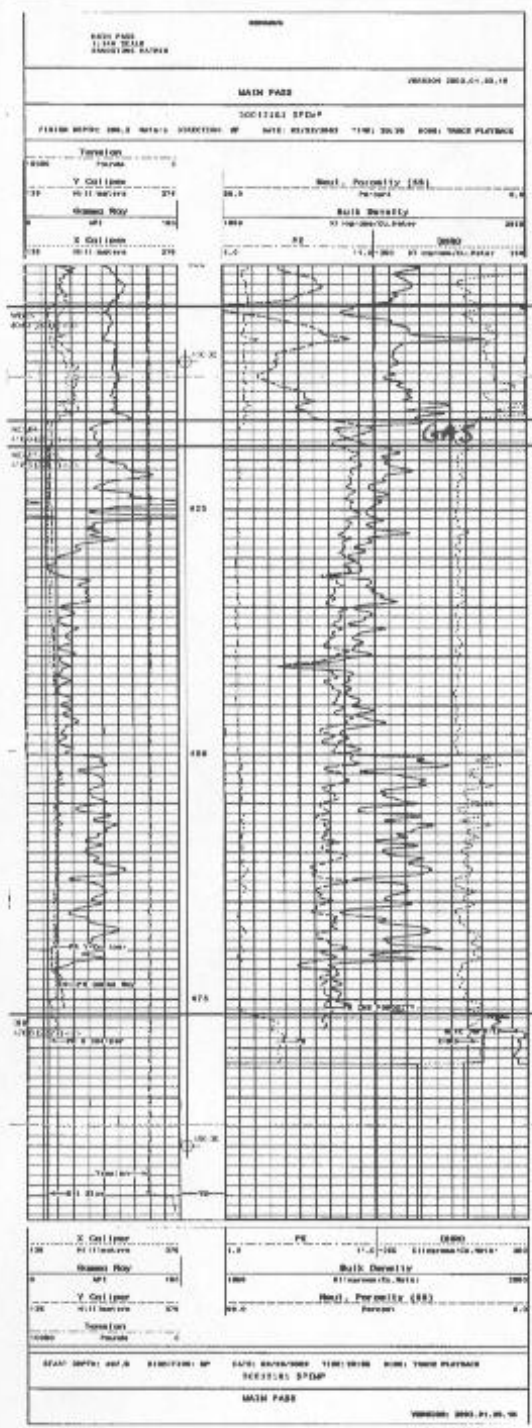


Petrel input for **100/03-03-81-10W4** showing PEOC facies designation and log analysis; lower section showing “sand” (channel sand).



AA/03-36-080-10W4/0

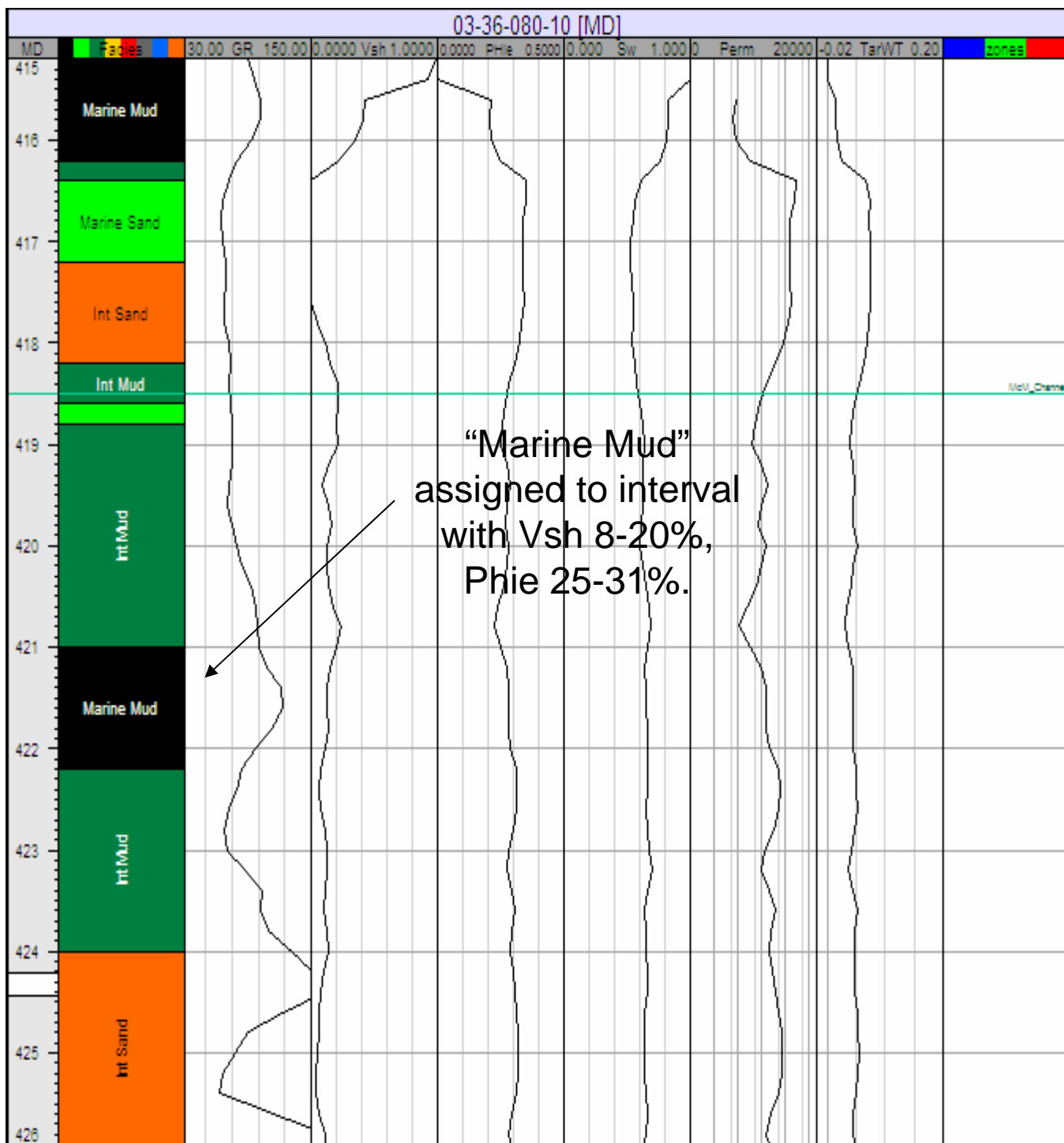
KB: 697.3 m RR: 2002-02-23
 TD: 455.0 m FormTD: B-H
 Mode: Abnd Fluid: NA
 MP ETAL 01 OV CORNER 3-36-80-10



DST Information

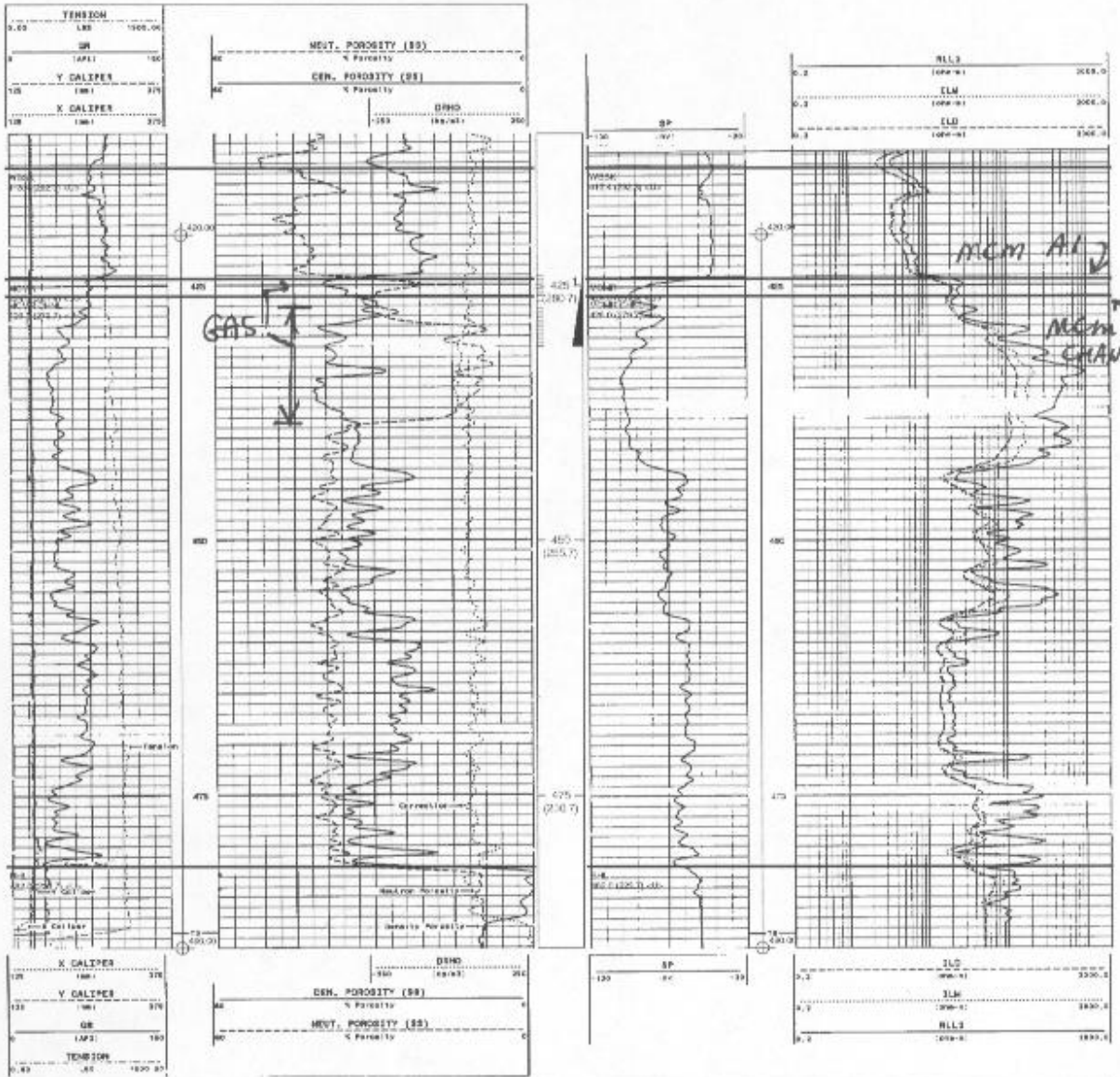
Prod	Oil (m3)	Gas (E3m3)	Water (m3)
Cum	0.0	0.0	0.0
Daily	0.0	0.0	0.0

Petrel input for **100/03-36-80-10W4** showing PEOC facies designation and log analysis.



00/10-11-081-10W4/0

KB: 705.7 m RR: 1993-01-27
 TD: 489.0 m FormTD: BHL
 Mode: Susp Fluid: Gas
 PARA TOGL HANGINGSTONE 10-11-81-10

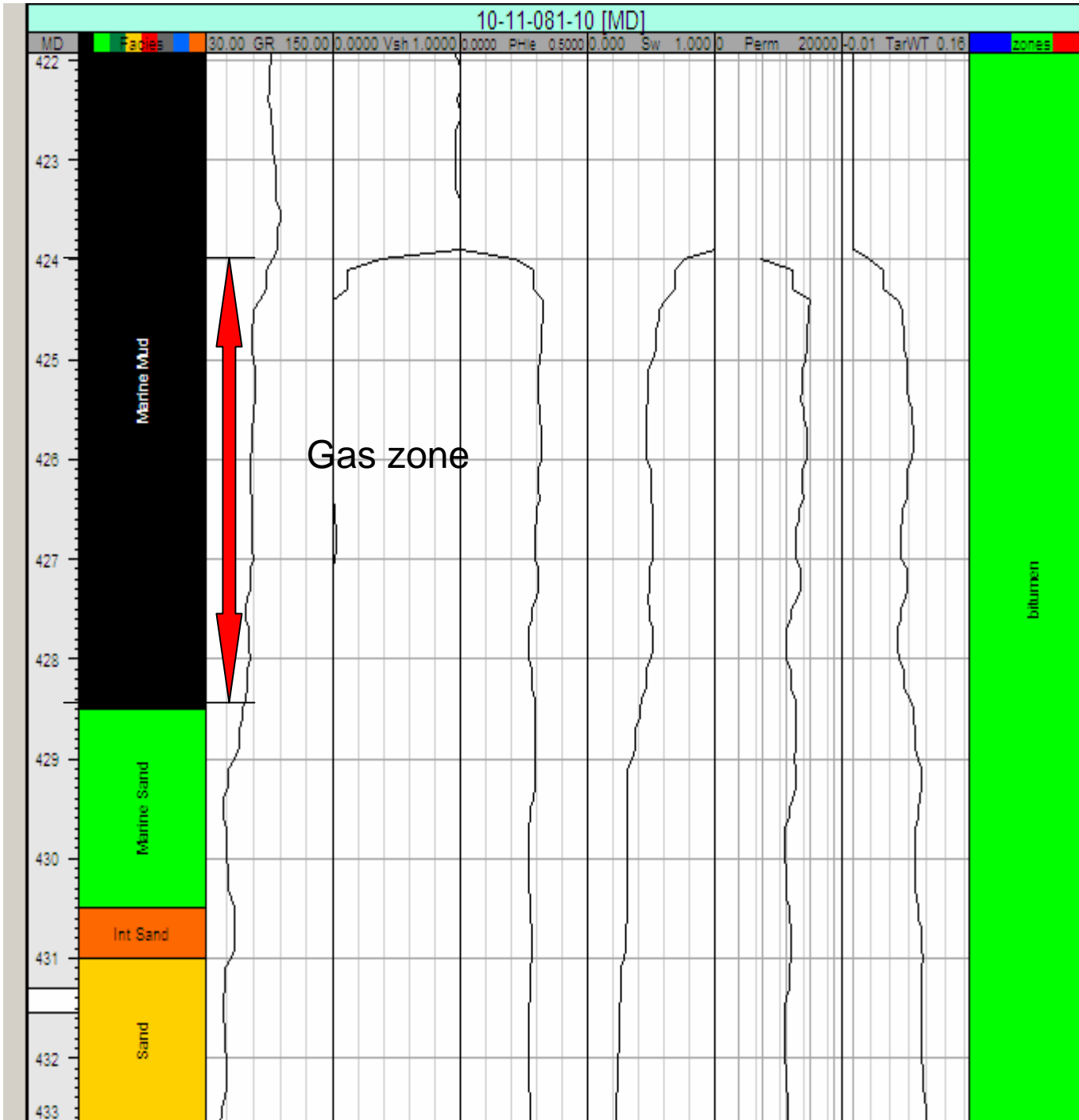


DST Information

1. 424.0-431.0 (WBSK)
 Type: IP - PRODUCTION
 VO: 0.0/0.0 SI: 0.0/0.0 min
 FP: 1675.0/1675.0 kPa
 SIP: 1875.0/1875.0 kPa
 HP: 0.0/0.0 kPa
 ".3% CO2, 1.7 ML/M3 LIQ:"

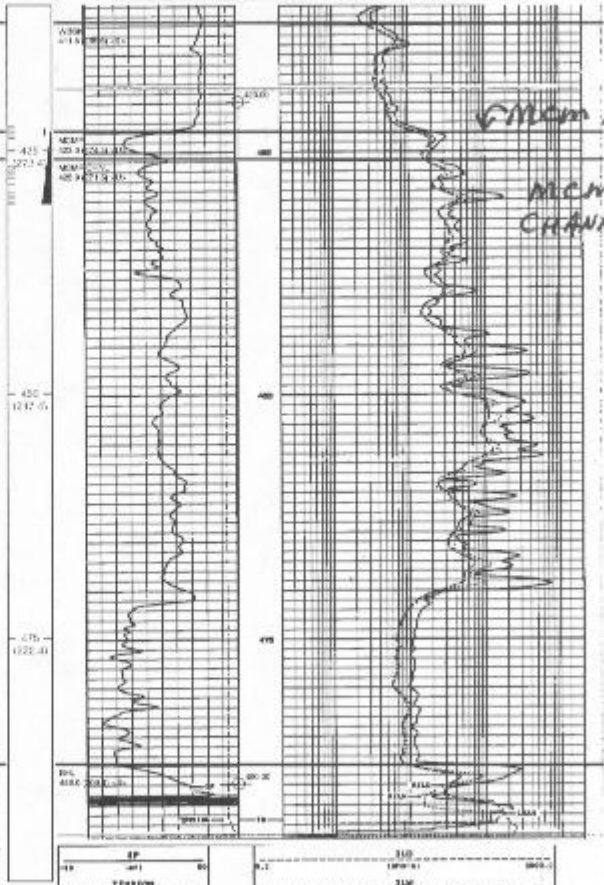
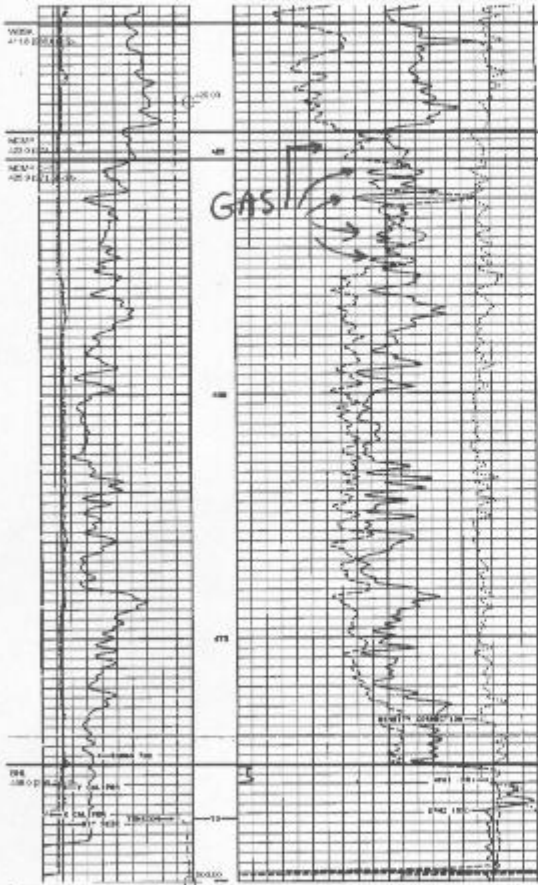
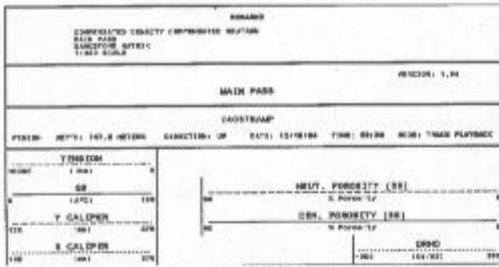
Prod	Oil (m3)	Gas (B3m3)	Water (m3)
Cum	0.0	68478.3	376.7
Daily	0.0	19.5	0.3

Petrel input for 100/10-11-81-10W4 showing PEOC facies designation and log analysis.



00/08-04-081-10W4/0

KB: 697.4 m RR: 1994-12-17
 TD: 493.0 m Form: TC: BHL
 Mose Susp Fluid: Gas
 PARA HANGINGSTONE 8-4-81-10

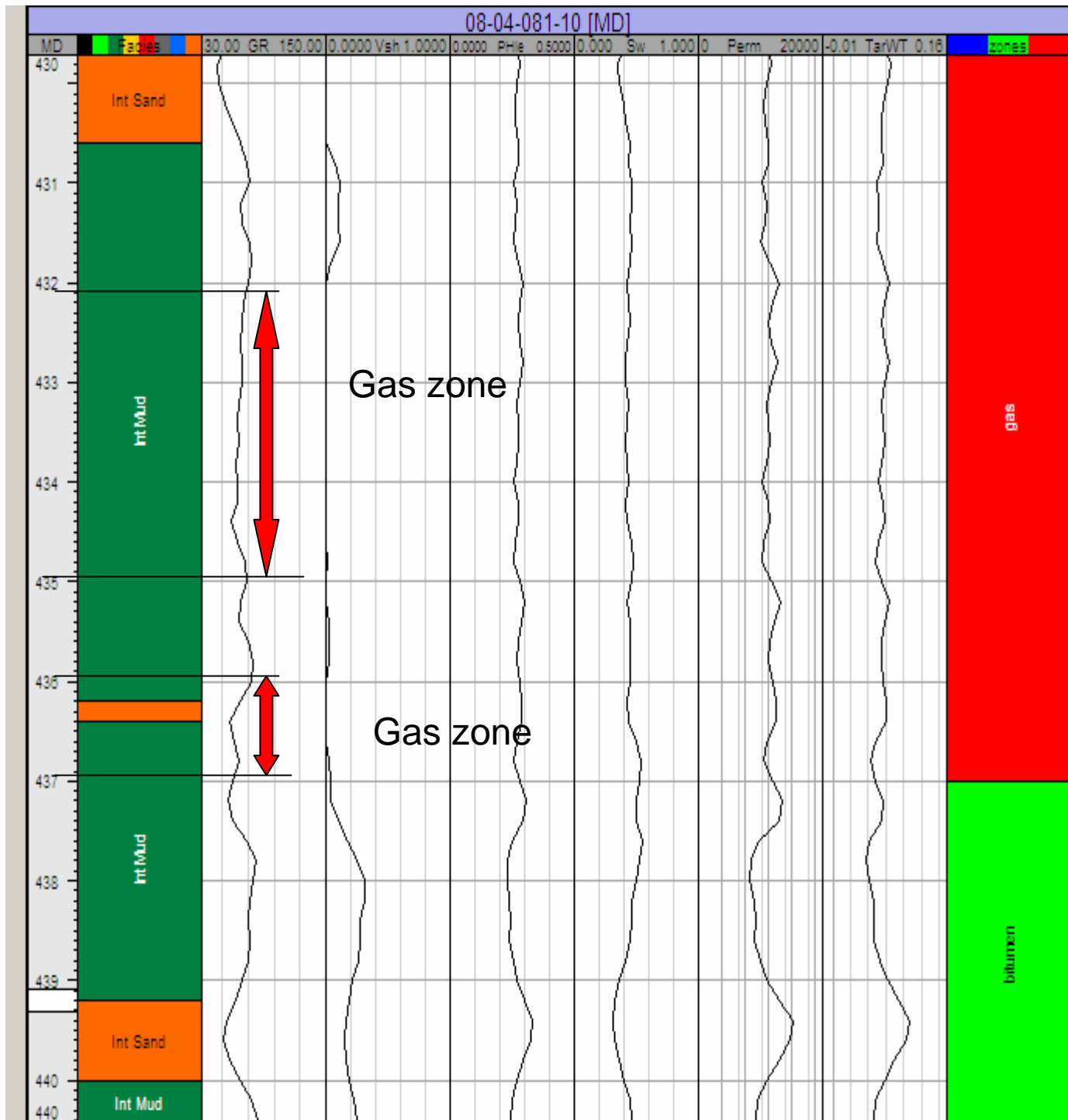


DST Information:

1. 422.5-430.5 (MCMG)
 Type: IP - PRODUCTION
 VC: 0.0/0.0 SI: 0.0/0.0 min
 FP: 1580.0/1580.0 kPa
 SIP: 1750.0/1750.0 kPa
 HP: 0.0/0.0 kPa
 GAS: .5% CO2, 1.7 ML/M3 LEO, .5% CO2

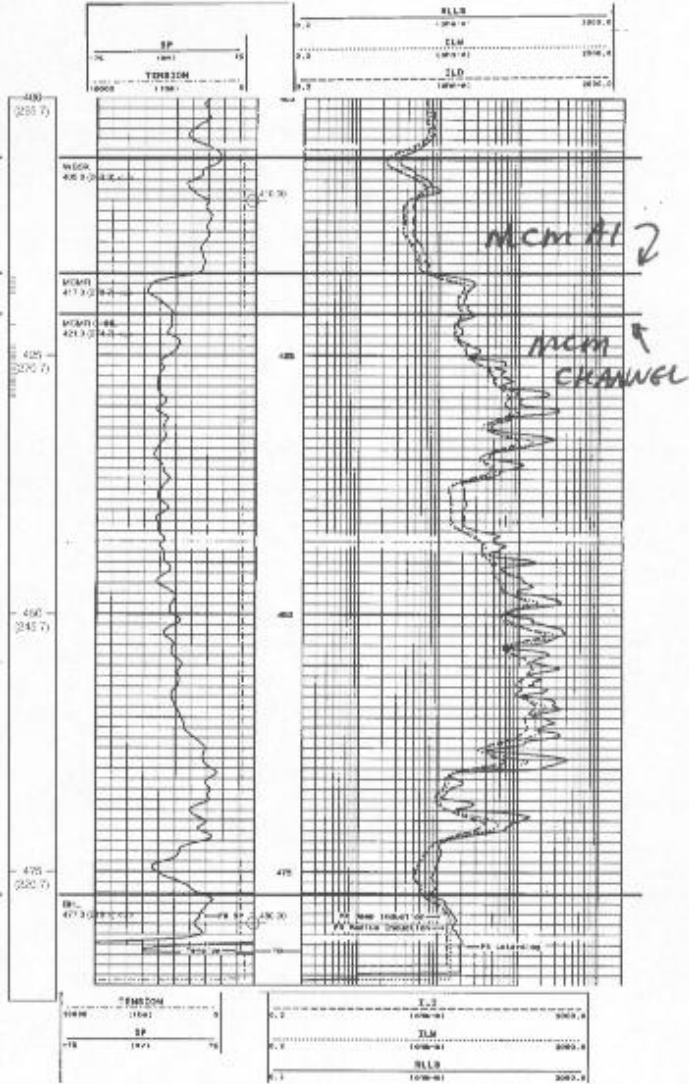
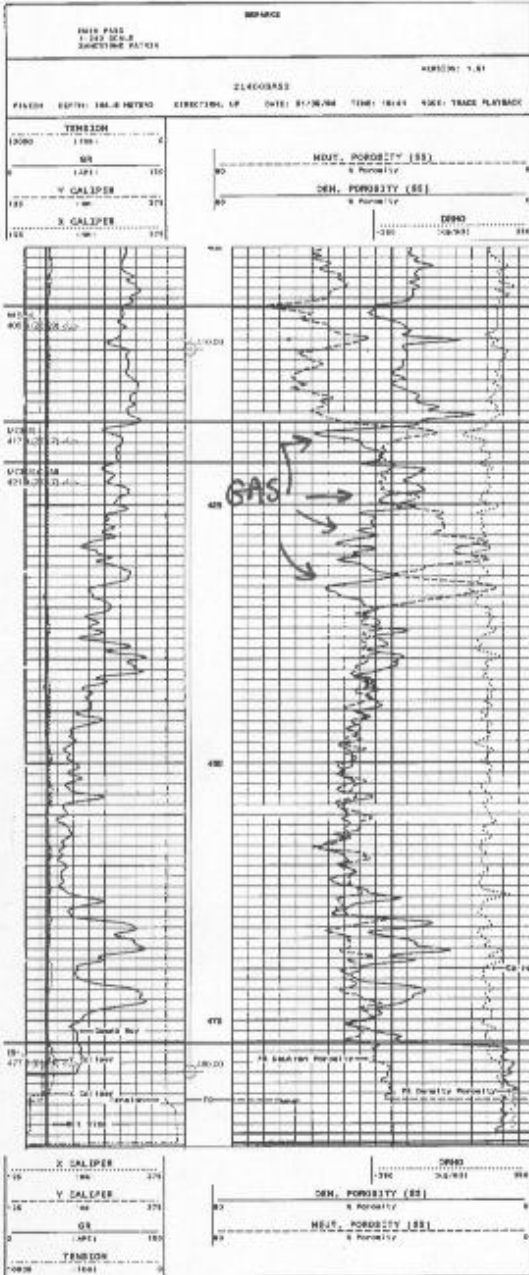
Prod	Oil (m3)	Gas (23m3)	Water (m3)
Cum	0.0	23885.0	1239.2
Daily	0.0	8.1	0.4

Petrel input for 100/08-04-81-10W4 showing PEOC facies designation and log analysis.



00/09-33-080-10W4/0

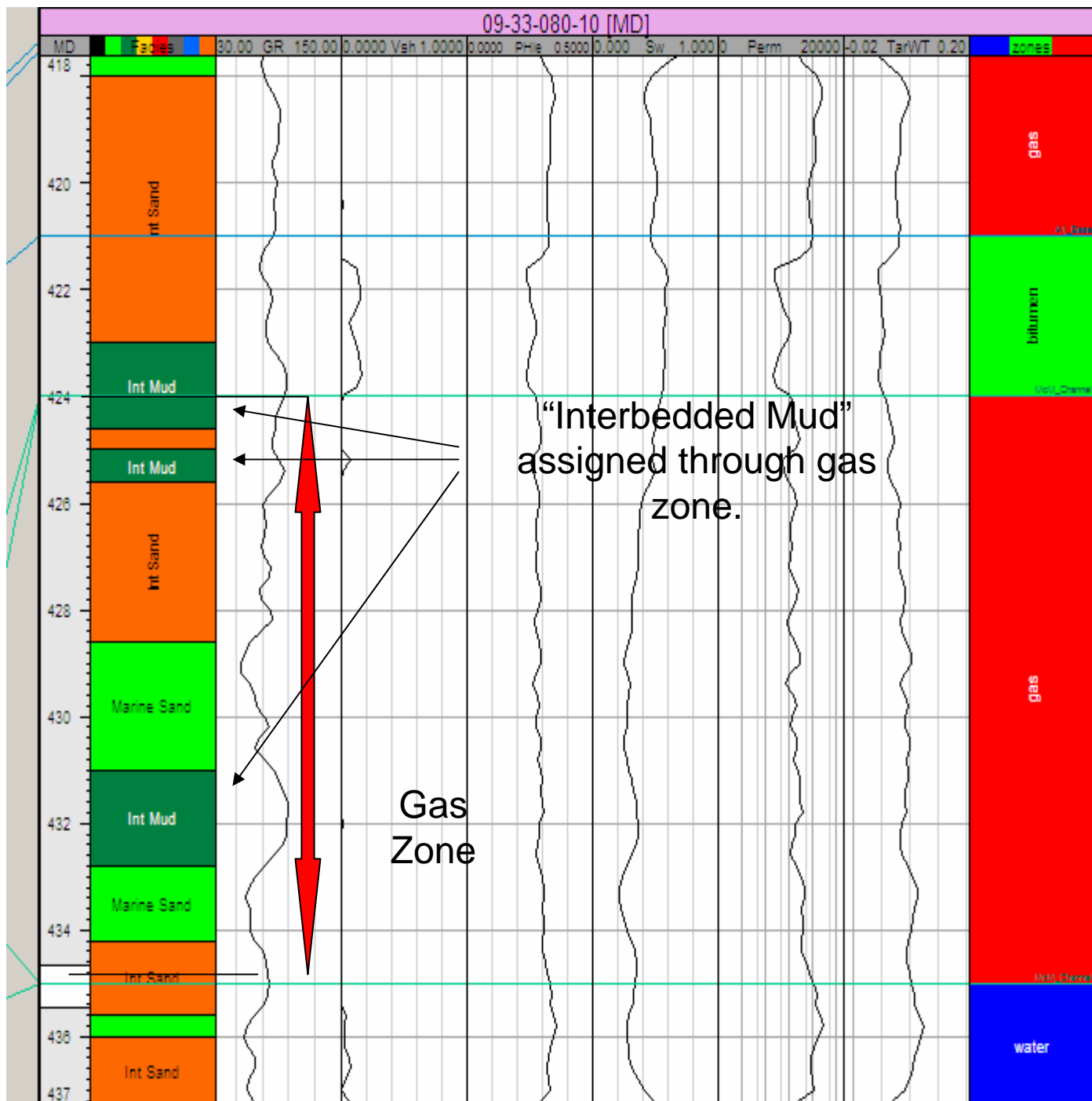
KB: 695.7 m RR: 1994-01-06
 TD: 482.6 m FormTD: BHL
 Mode: Susp Fluid: Gas
 PARA ET AL CORNER 9-33-80-10



EST Information

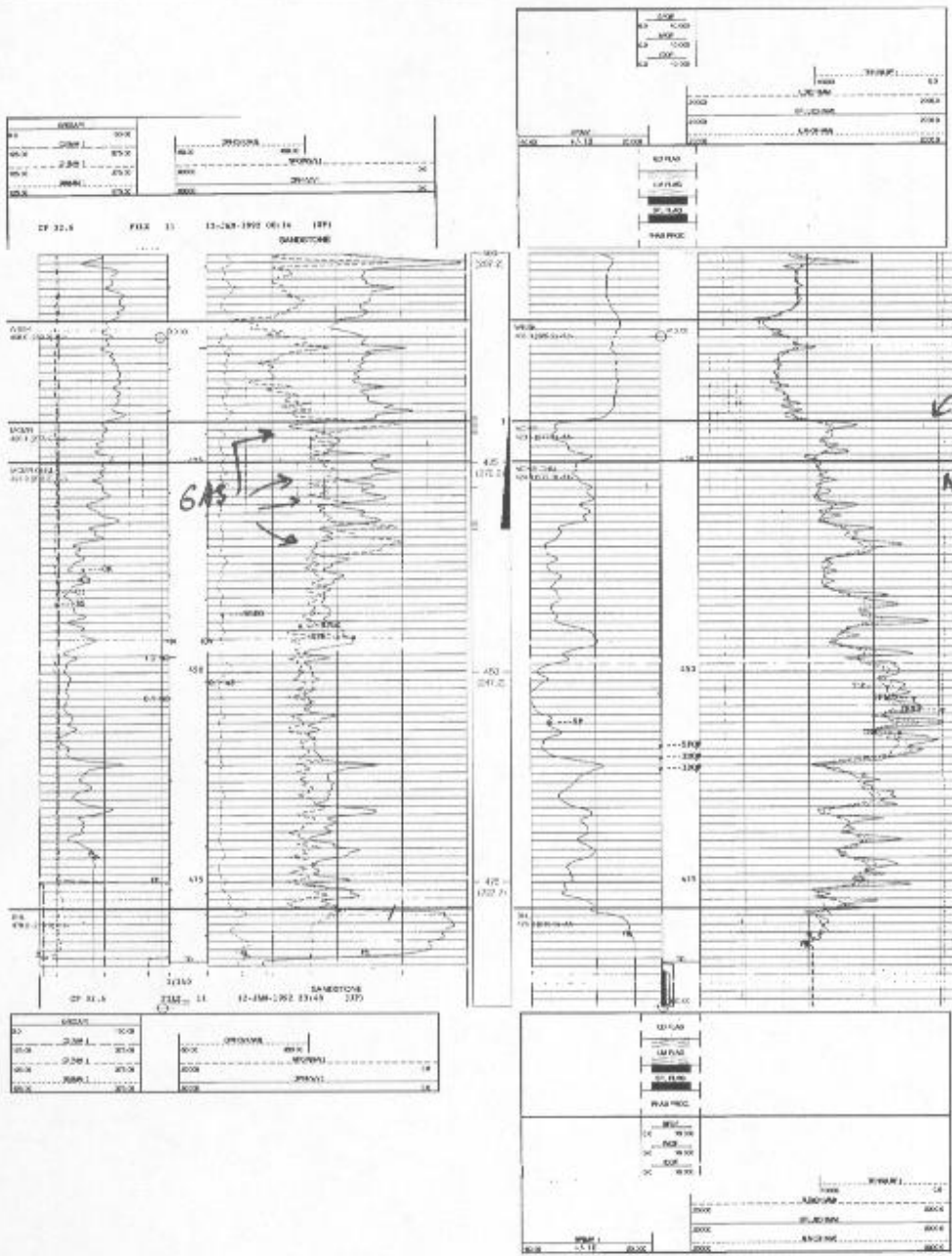
Prod	Oil (m3)	Gas (E3m3)	Water (m3)
Cum	0.0	128428.9	1096.5
Daily	0.0	36.8	0.3

Petrel input for 100/09-33-80-10W4 showing PEOC facies designation and log analysis.



00/11-34-080-10W4/0

K3: 897.2 m RR: 1992-01-13
 TD: 485.0 m FormTD: BHL
 Mode: Suso Fluid: Gas
 PARA TOGL CORNER 11-34-85-10



DST Information

L: 419.5-423.0 (WBER)

Type: IP - PRODUCTION

VO: 0.0/0.0 SI: 0.0/0.0 min

FP: 2544.0/2544.0 kPa

SIP: 0.0/0.0 kPa

EP: 0.0/0.0 kPa

FW 4.460 CHE- X, .995 SG, 240 MG/L CL, RW 4.430 CHH- W:*

Prod	Oil (m3)	Gas (33m3)	Water (m3)
Cum	0.0	18150.2	2895.0
Daily	0.0	5.5	0.9

Petrel input for 100/11-34-80-10W4 showing PEOC facies designation and log analysis.

