

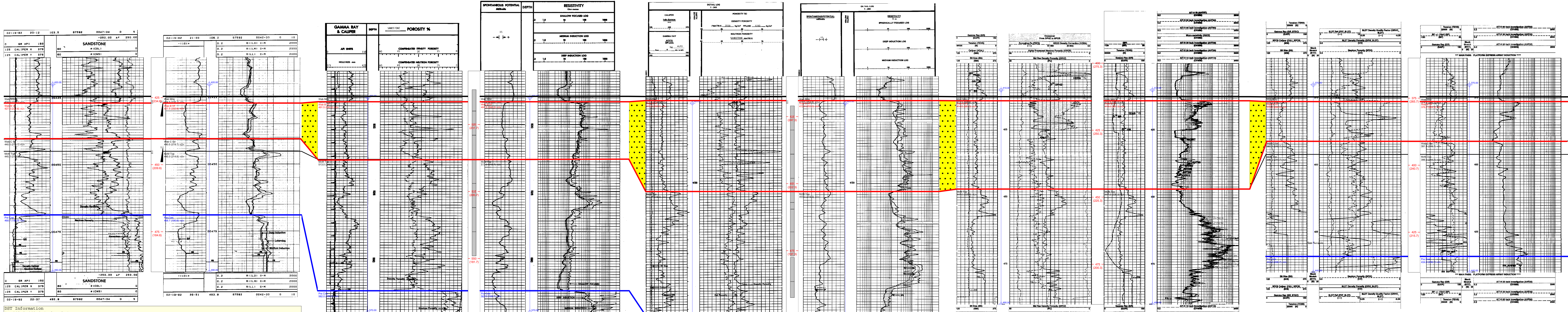
00/06-32-073-09W4/0  
 KB: 656.6 m RR: 1982-02-10  
 TD: 487.1 m FormTD: BHL  
 Mode: Prod Fluid: Gas  
 RAX ET AL CLYDE LAKE 6-32-73-9  
 18613.8m to next well

00/10-19-073-07W4/0  
 KB: 731.7 m RR: 1982-02-13  
 TD: 578.0 m FormTD: BHL  
 Mode: Abnd Fluid: N/A  
 RAX NCR KIRBY 10-19-73  
 14128.5m to previous well 14128.5m to next well

00/11-22-073-06W4/0  
 KB: 672.3 m RR: 1981-02-21  
 TD: 512.0 m FormTD: BHL  
 Mode: Prod Fluid: Gas  
 AMOCO KIRBY 11-22-73-6  
 14128.5m to previous well 14168.9m to next well

02/05-30-073-04W4/0  
 KB: 675.3 m RR: 1988-02-01  
 TD: 486.0 m FormTD: M&M Top  
 Mode: Prod Fluid: Gas  
 AMOCO ET AL 102 KIRBY 3-9-74-4  
 14168.9m to previous well 5959.7m to next well

00/03-09-074-04W4/0  
 KB: 640.7 m RR: 2001-01-26  
 TD: 440.0 m FormTD: BHL  
 Mode: Prod Fluid: Gas  
 BP KIRBY 3-9-74-4  
 5959.7m to previous well



DSF Information  
 1. 441.0-489.0 (Sub Meter)  
 Type: SPRADOLE  
 WOI: 10.0/120.0 SI: 60.0/120.0 min  
 PFI: 1142.0/1197.0 kPa  
 STP: 2132.0/2128.0 kPa  
 HP: 5240.0/5240.0 kPa  
 \*STP MAX 20813 M3/D (1.735 NMCF/D), FINAL 20813 M3/D (1.735 NMCF/D); ERCSI: 20.0M (66'1) - FRMTR, GAS: .541  
 \*STP MAX 6915 M3/L CL. RW -490 OBR- M\*\*  
 \*STP MAX 6915 M3/L CL. RW -490 OBR- M\*\*  
 2. 426.0-432.0 (C/OBR)  
 Type: SPRADOLE  
 WOI: 10.0/120.0 SI: 60.0/120.0 min  
 PFI: 1218.0/1472.0 kPa  
 STP: 2038.0/2038.0 kPa  
 HP: 5179.0/5179.0 kPa  
 \*STP MAX 20813 M3/D (1.735 NMCF/D), FINAL 20813 M3/D (1.735 NMCF/D); ERCSI: 60.0M (197') - WTR, GAS: .540  
 \*STP MAX 6270 M3/L CL. RW -493 OBR- M\*\*  
 \*STP MAX 6270 M3/L CL. RW -493 OBR- M\*\*

Prod	Oil (m3)	Gas (E3m3)	Water (m3)
Cum	0.0	7711.1	436.1
Daily	0.0	2.7	0.1

DSF Information  
 Prod Oil (m3) Gas (E3m3) Water (m3)  
 Cum 0.0 0.0 0.0  
 Daily 0.0 0.0 0.0

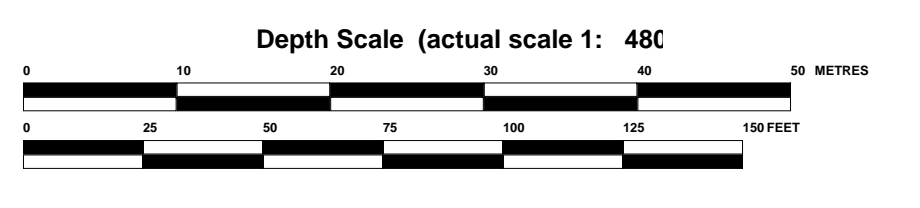
DSF Information  
 Prod Oil (m3) Gas (E3m3) Water (m3)  
 Cum 0.0 0.0 0.0  
 Daily 0.0 16.9 0.0

DSF Information  
 Prod Oil (m3) Gas (E3m3) Water (m3)  
 Cum 0.0 103394.3 840.1  
 Daily 0.0 42.9 0.3

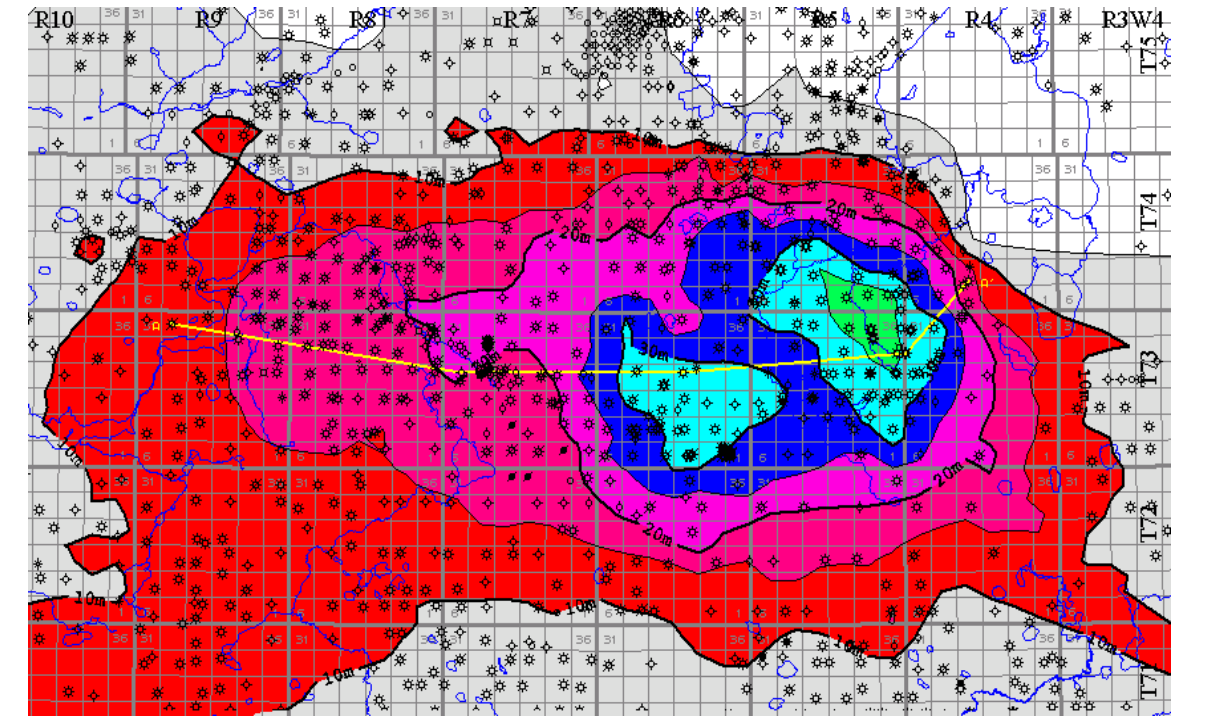
DSF Information  
 Prod Oil (m3) Gas (E3m3) Water (m3)  
 Cum 0.0 19920.2 379.0  
 Daily 0.0 14.8 0.3

**Legend**

- Prod Gas Well
- Abnd N/A Well
- Contact Type - Conformity
- Contact Type - Unconformity
- Contact Type - Time Equivalence
- Contact Type - L&B Fault
- Contact Type - Right Fault
- Sandstone



Wabiskaw B Valley Fill



**CNRL**

Figure 1. Wabiskaw B Valley Fill Reginal Stratigraphic Section

Produced by: ARA logo version 7.0.5.0  
 Author: Waterfield  
 Modified On: Friday, February 11, 2005 10:58AM  
 Printed On: Friday, February 11, 2005 11:04AM  
 Start Formation: 5m above 0000  
 End Formation: 5m below 0100  
 Cross Section Name: WABSKAW