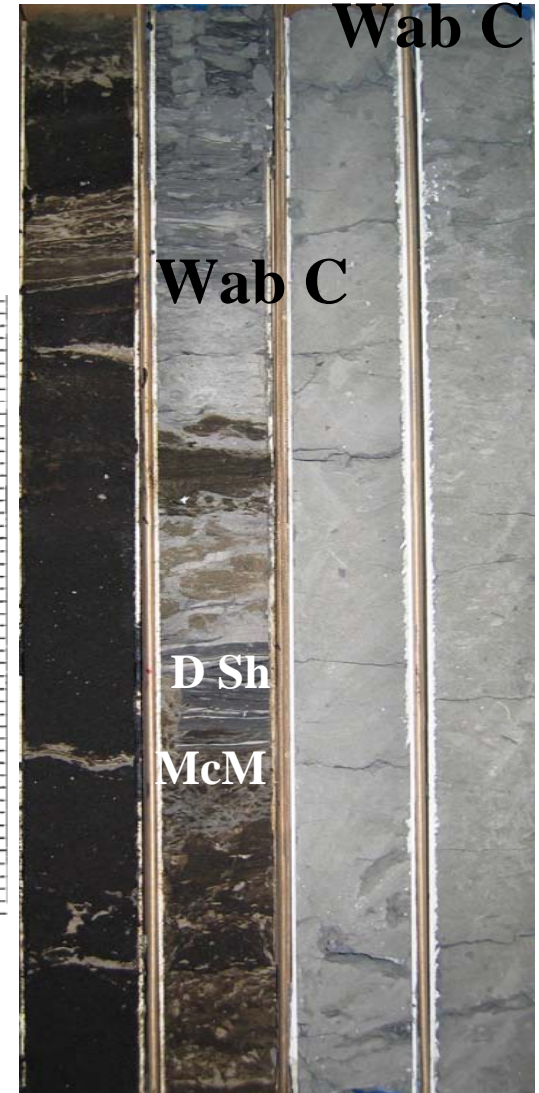
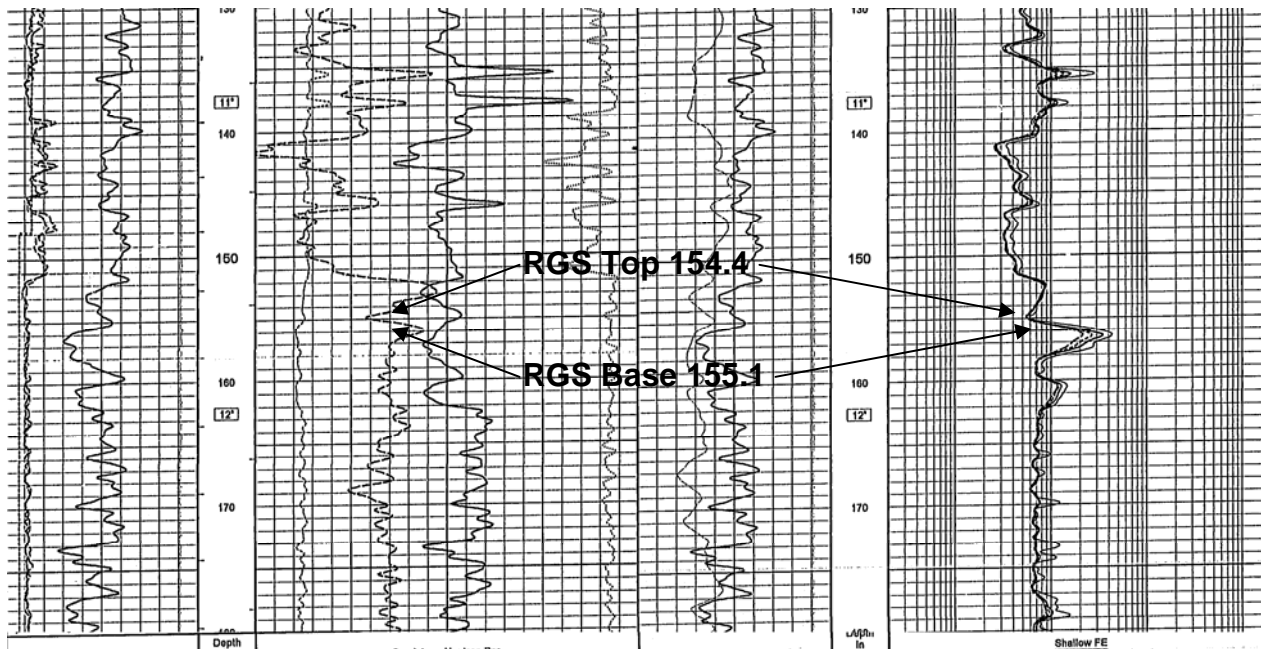


AA/08-36-086-07W4/0

153.3 m

Log Overestimates Wabiskaw D Shale Thickness

RGS Log Thickness = 0.7 Metre
SSG Core Thickness = 0.07 Metre

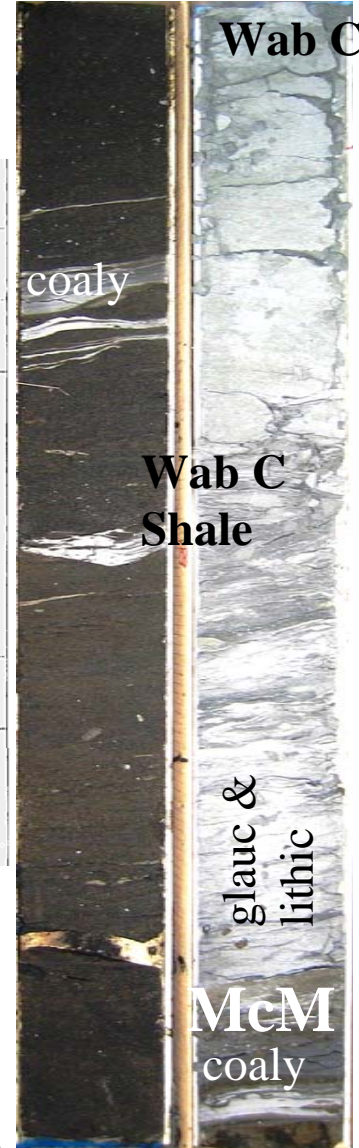
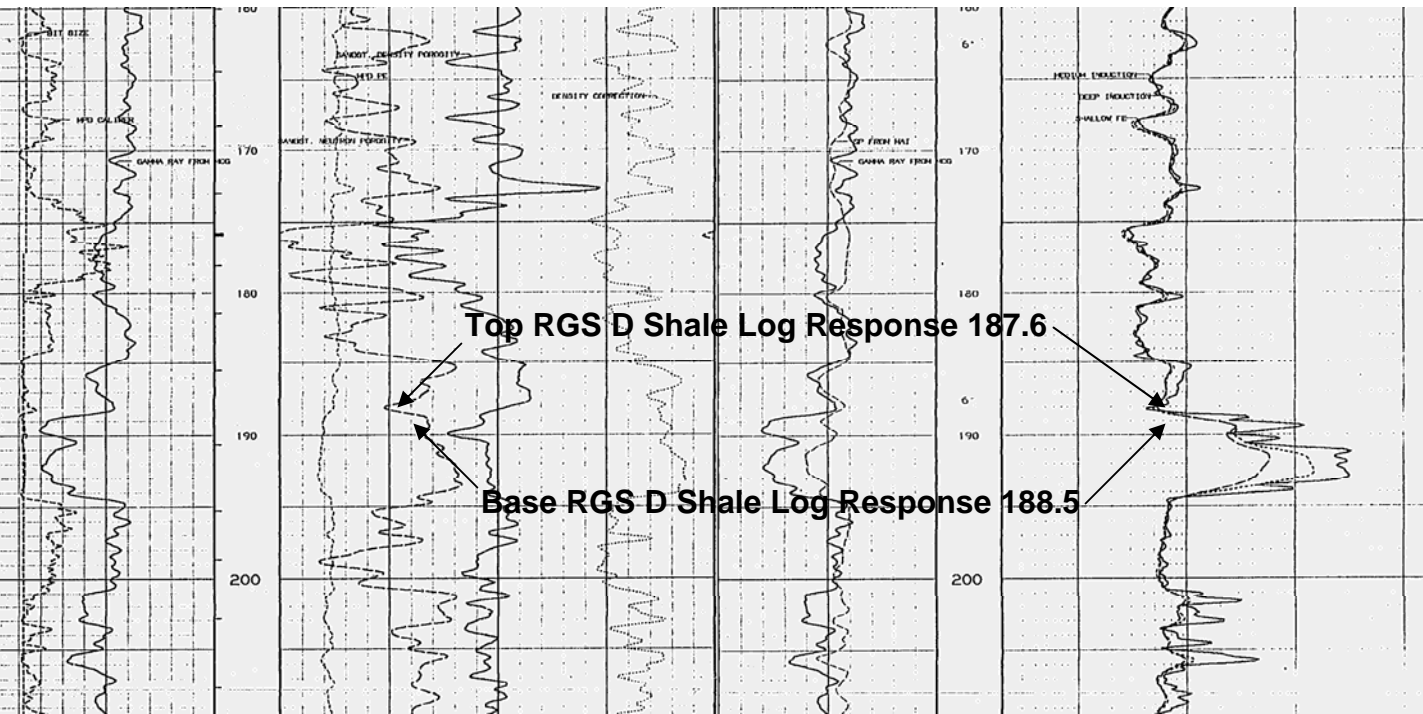


156.3 m

AA/10-14-086-07W4/0

187.9 m

RGS Log Interpretation = Wabiskaw D Shale
SSG Core Interpretation = Wabiskaw C Shale



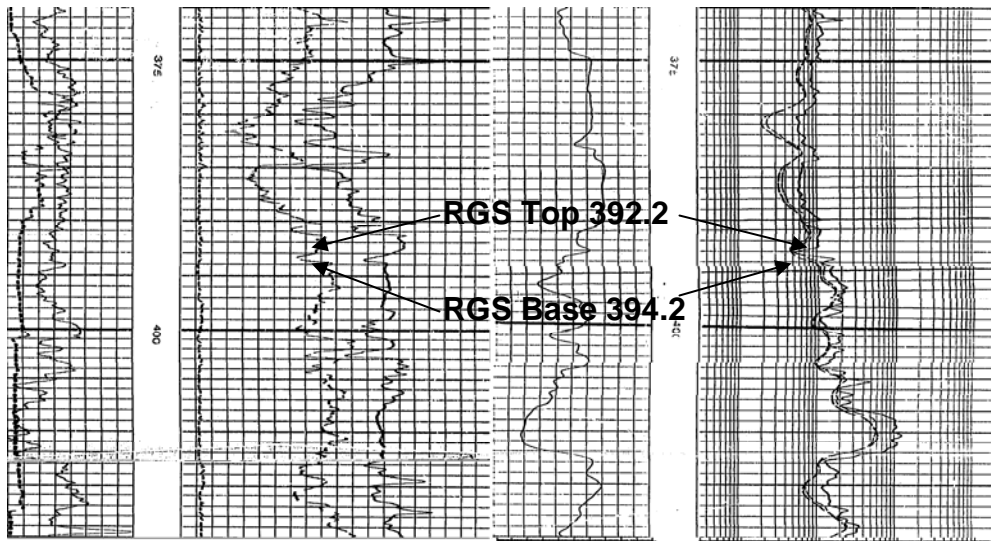
189.4 m

AA/07-26-080-08W4/0

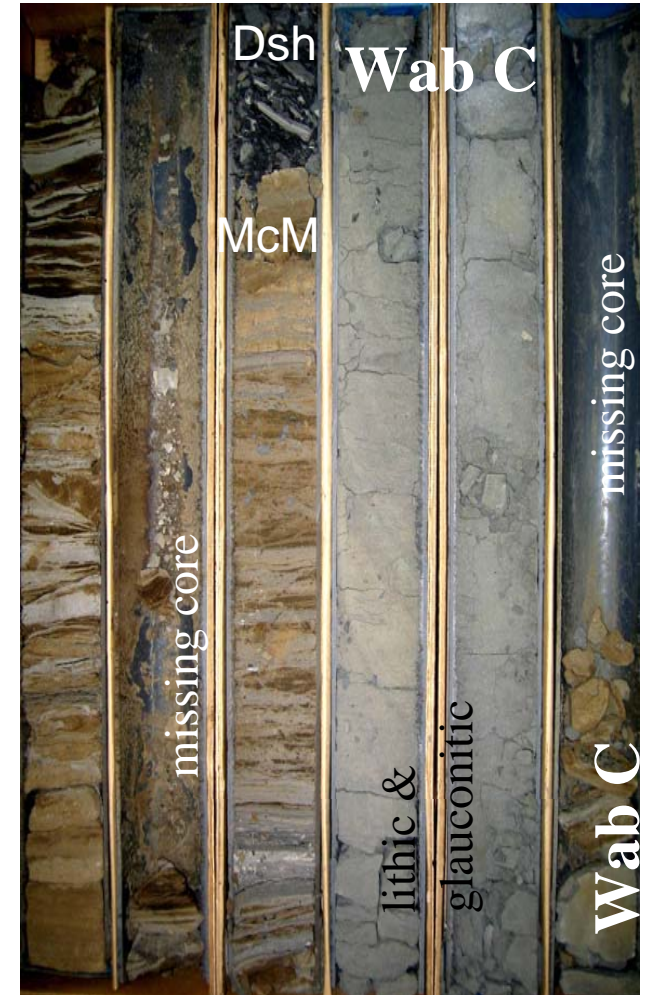
Log Overestimates Wabiskaw D Shale Thickness

RGS Log Thickness = 2.0 Metres

SSG Core Thickness = 0.14 Metre



392 m



396.75 m

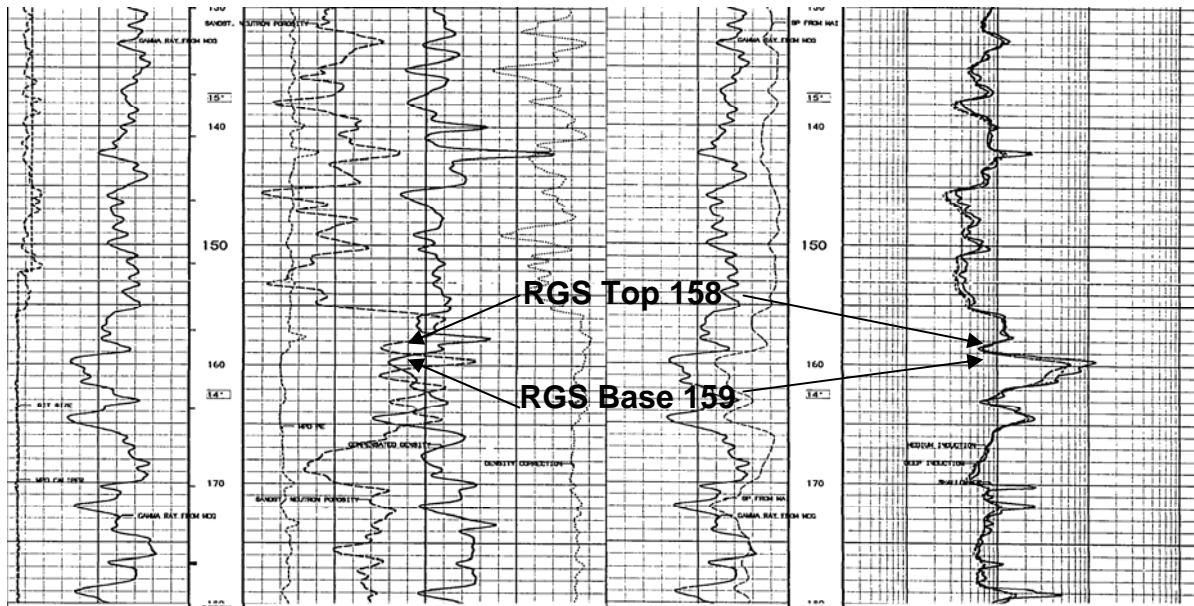
AA/14-25-086-07W4/0

157.4 m

Log Overestimates Wabiskaw D Shale Thickness

RGS Log Thickness = 1.0 Metre

SSG Core Thickness = 0.08 Metre



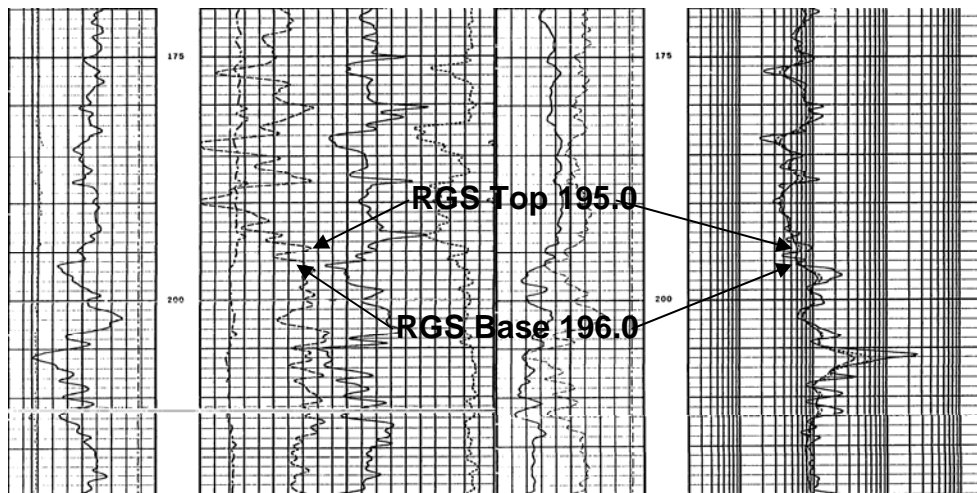
160.9 m

AA/02-20-086-08W4/0

Log Overestimates Wabiskaw D Shale Thickness

195.35 m

RGS Log Thickness = 1.0 Metre
SSG Core Thickness = 0.23 Metre



199.44 m