



EnCana Christina Lake Thermal Project

2005 In Situ Update

Solvent Aided Process
Experimental Approval No. 9634

Confidential Data

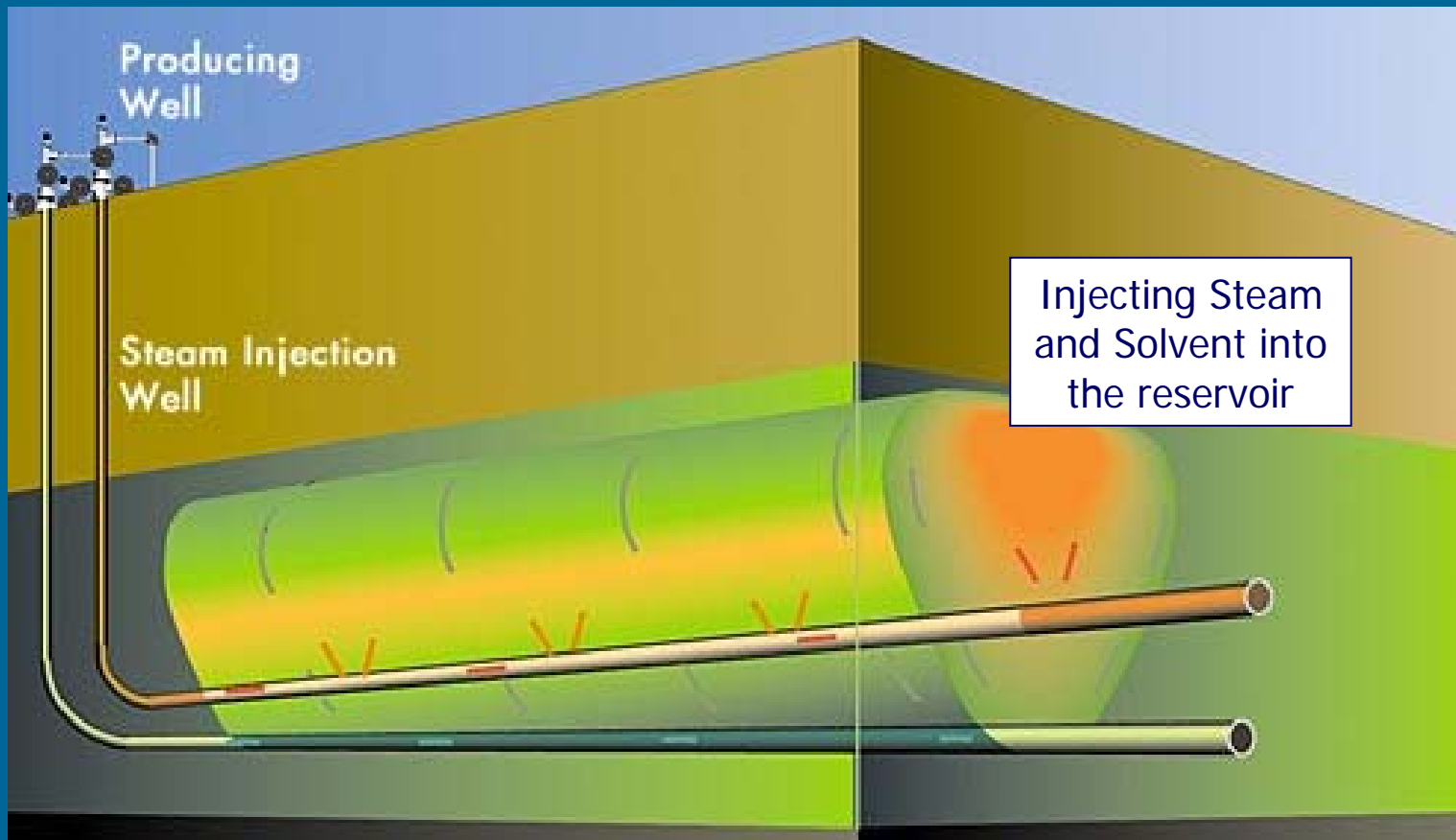
- Experimental Approvals

- Confidential -
Approval No. 9634

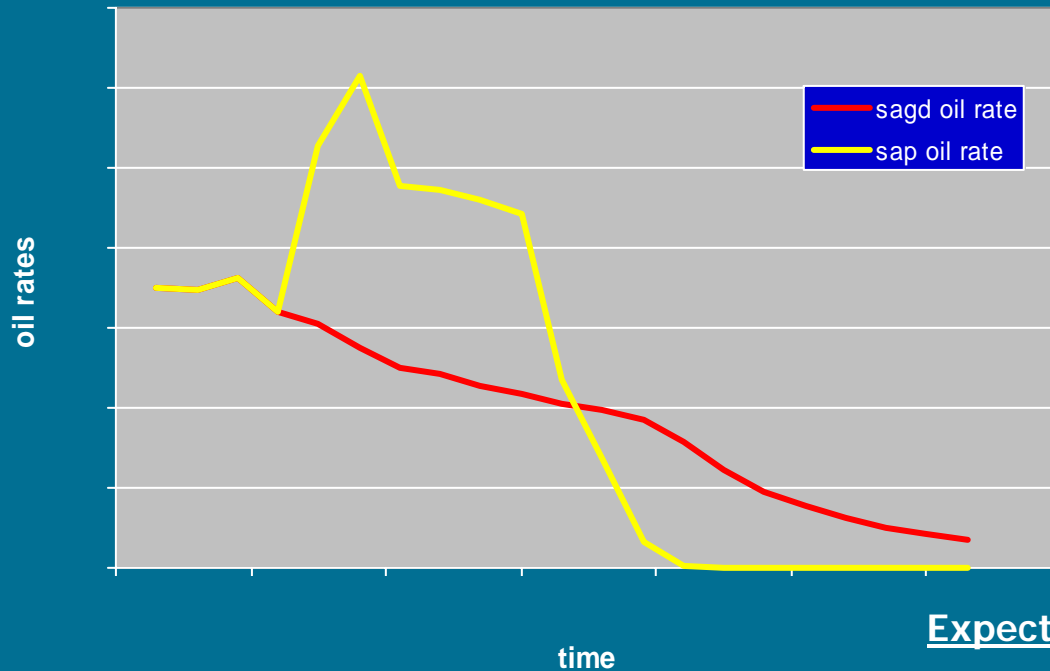
- This presentation contains data confidential to the Board as per the following experimental approval;
 - Approval No. 9634 – Solvent Aided Process (SAP)
- Slides related to the above approvals will be clearly marked and are not for public distribution

Solvent Aided Process - Improvement on SAGD

- Confidential -
Approval No. 9634



Expected Production with Combining Solvent with SAGD



- Confidential -
Approval No. 9634

Expected SAP Benefits (example)

	<u>SAGD</u>	<u>SAP</u>
■ SOR	2	1.4
■ Recovery	65%	(as high as) 90%
■ Lower Emissions		
■ Less Water Usage		
■ In Situ Upgrading		
■ Possible Reserves Addition		

Solvent Aided Process - Christina Lake Pilot

- Confidential -
Approval No. 9634

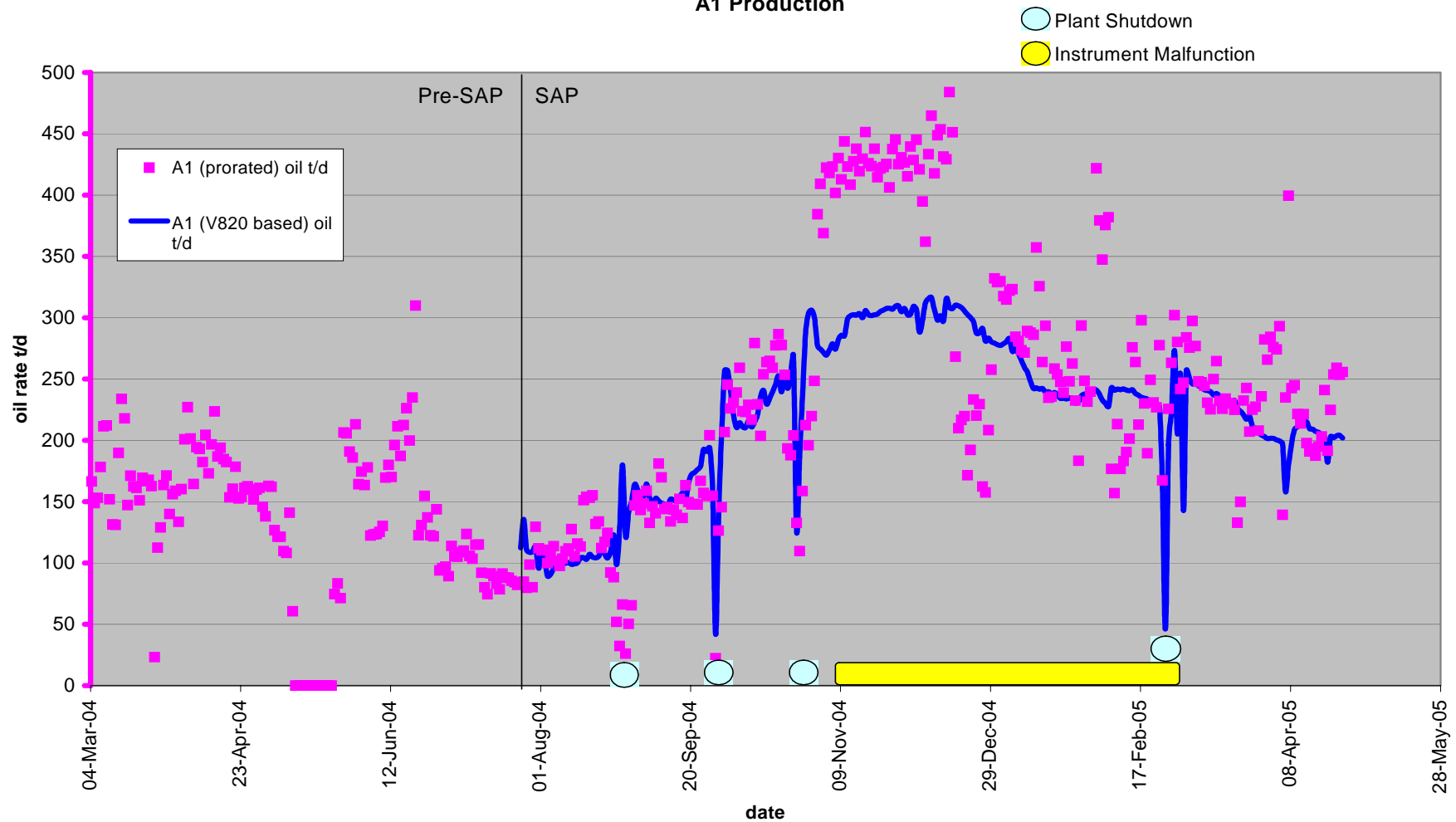
- Evaluate commercial potential, CL SAP Pilot, 2004-2007
 - Rate acceleration
 - Solvent retention
 - In situ upgrading
 - Operational issues

- Pilot started July 2004

Solvent Aided Process - Rate Acceleration

- Confidential -
Approval No. 9634

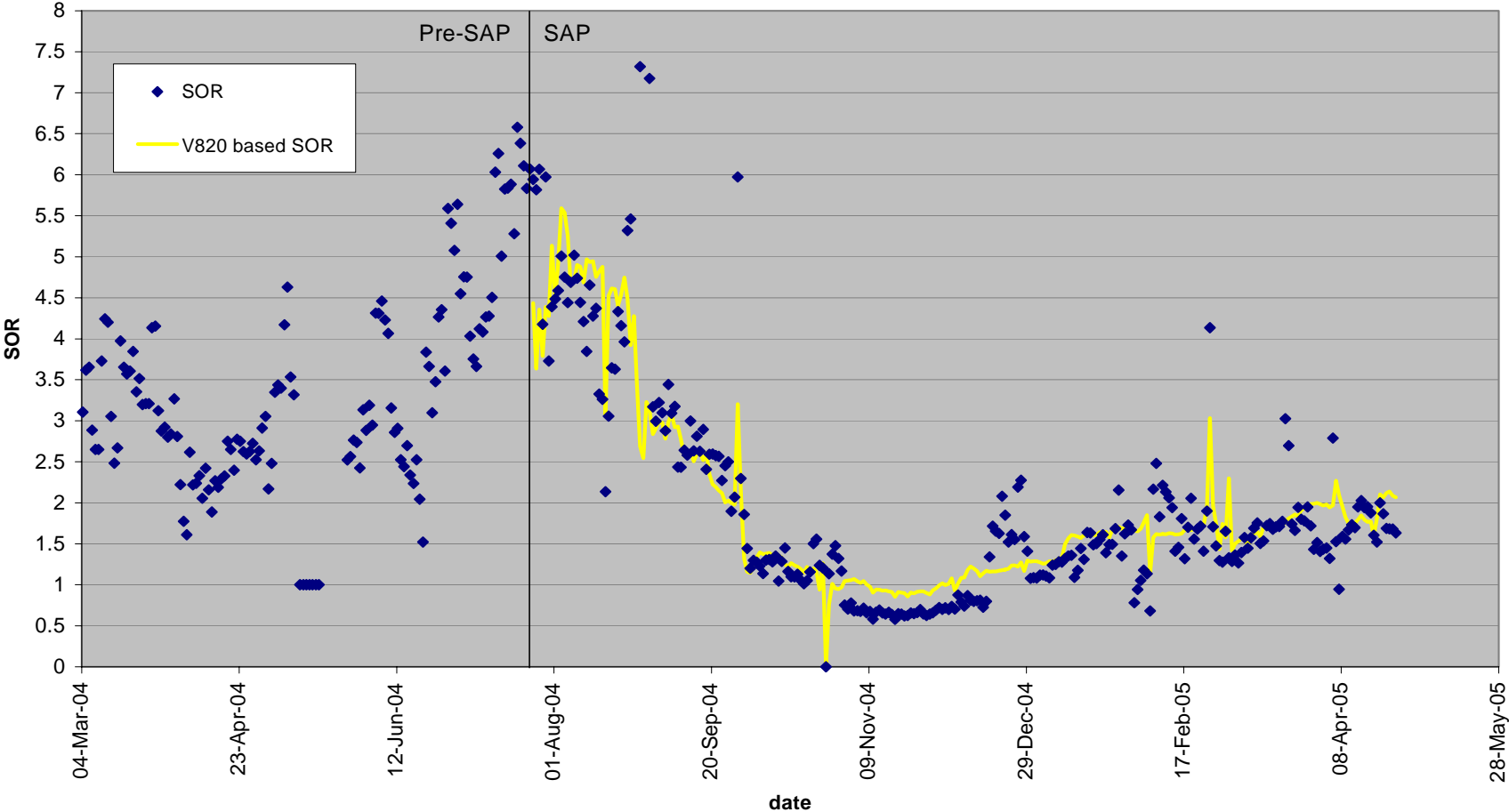
A1 Production



Solvent Aided Process - SOR Performance

- Confidential -
Approval No. 9634

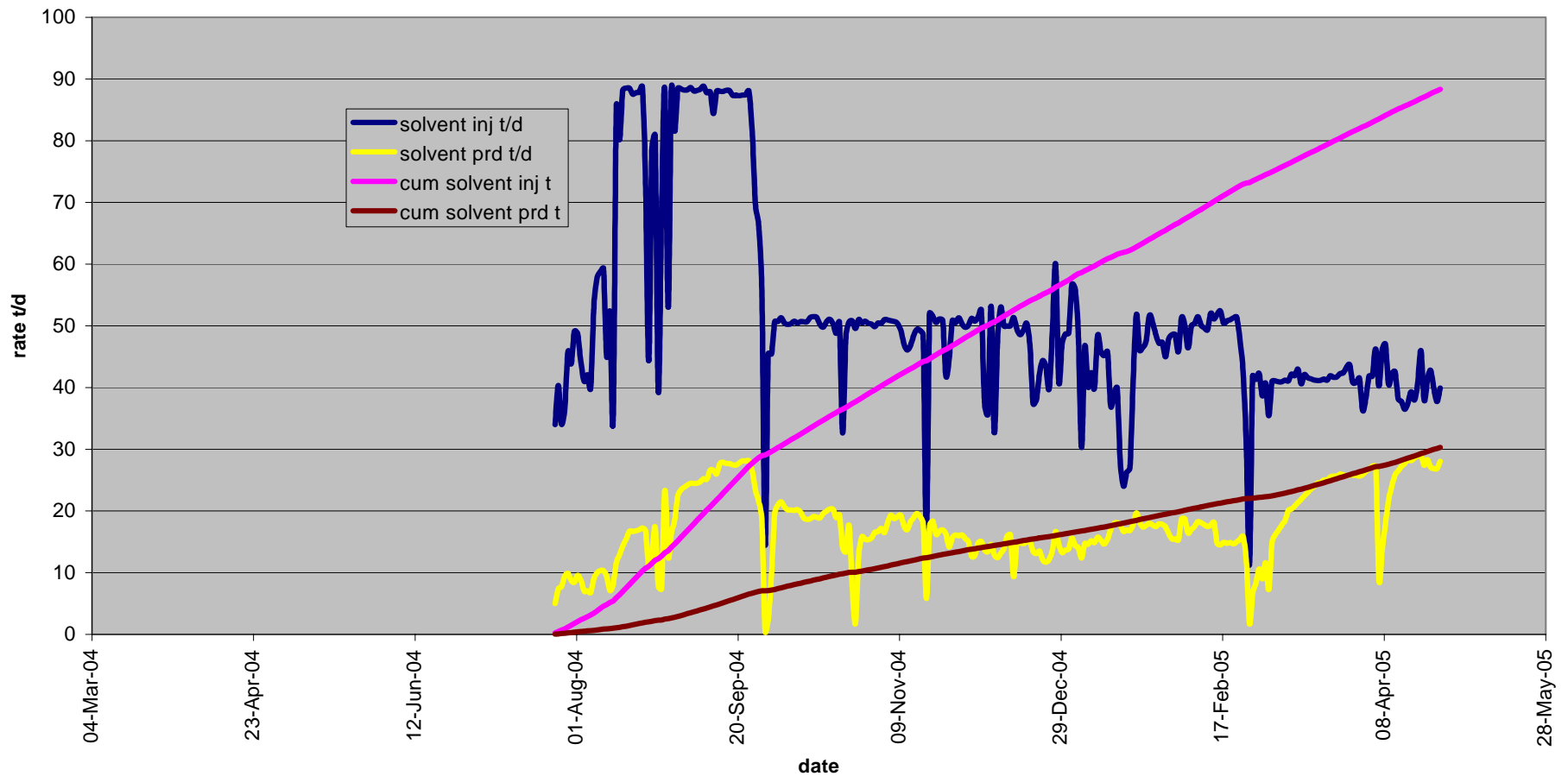
A1 SOR



Solvent Aided Process - Solvent Retention

- Confidential -
Approval No. 9634

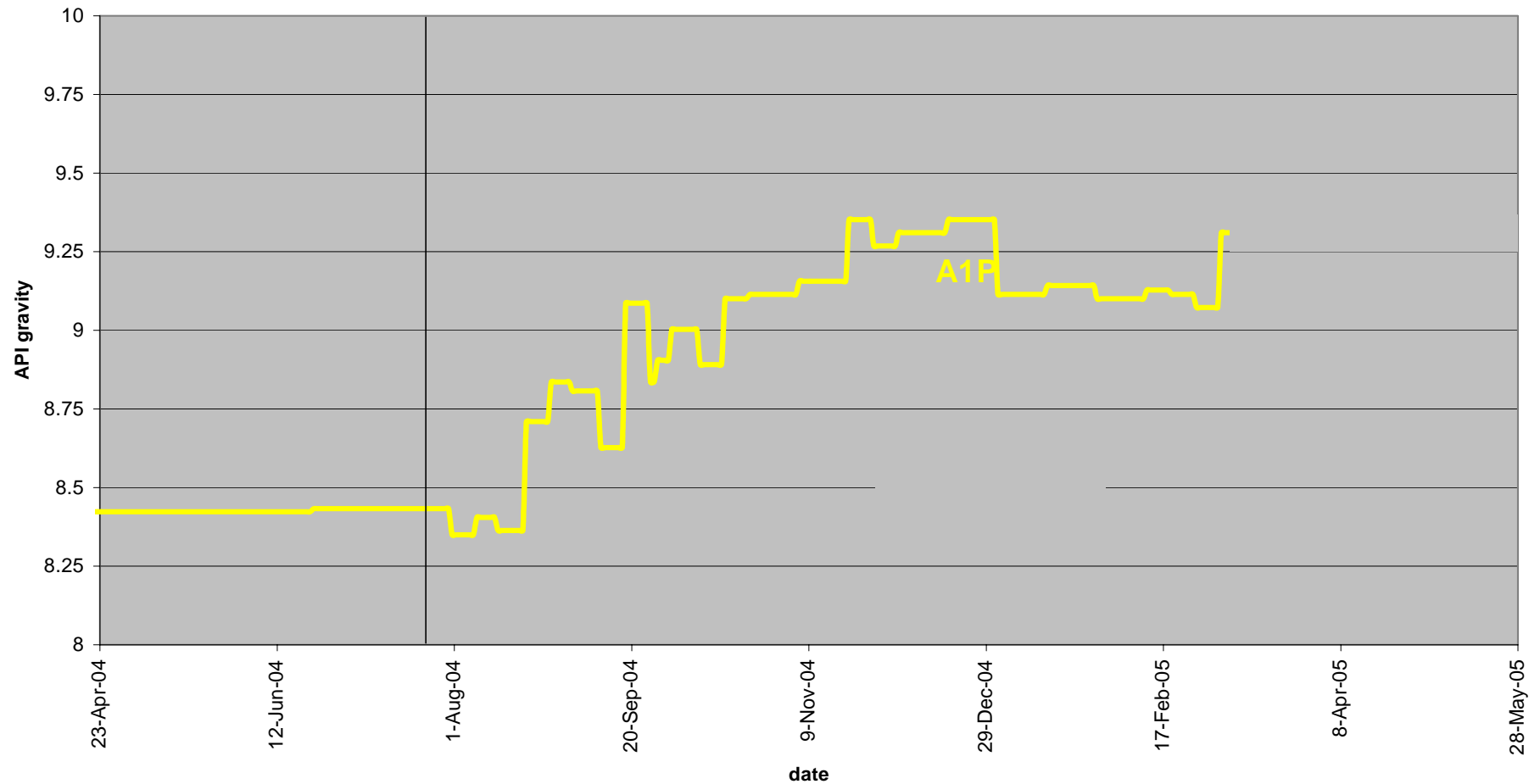
Solvent Injection, Production and Recycle



Solvent Aided Process - In Situ Upgrading

- Confidential -
Approval No. 9634

Produced Oil Quality

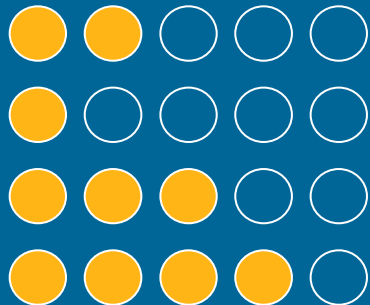


Solvent Aided Process - Christina Lake Pilot

- Confidential -
Approval No. 9634

Evaluate commercial potential
CL SAP Pilot, 2004-2007

Learnings



- Rate acceleration
- Solvent retention
- In situ upgrading
- Operational issues

Solvent Aided Process

- Next Steps

- Confidential -
Approval No. 9634

- Continue A1 SAP test for further solvent recovery assessment
- Seek Board approval for extending SAP test to A5 well pair