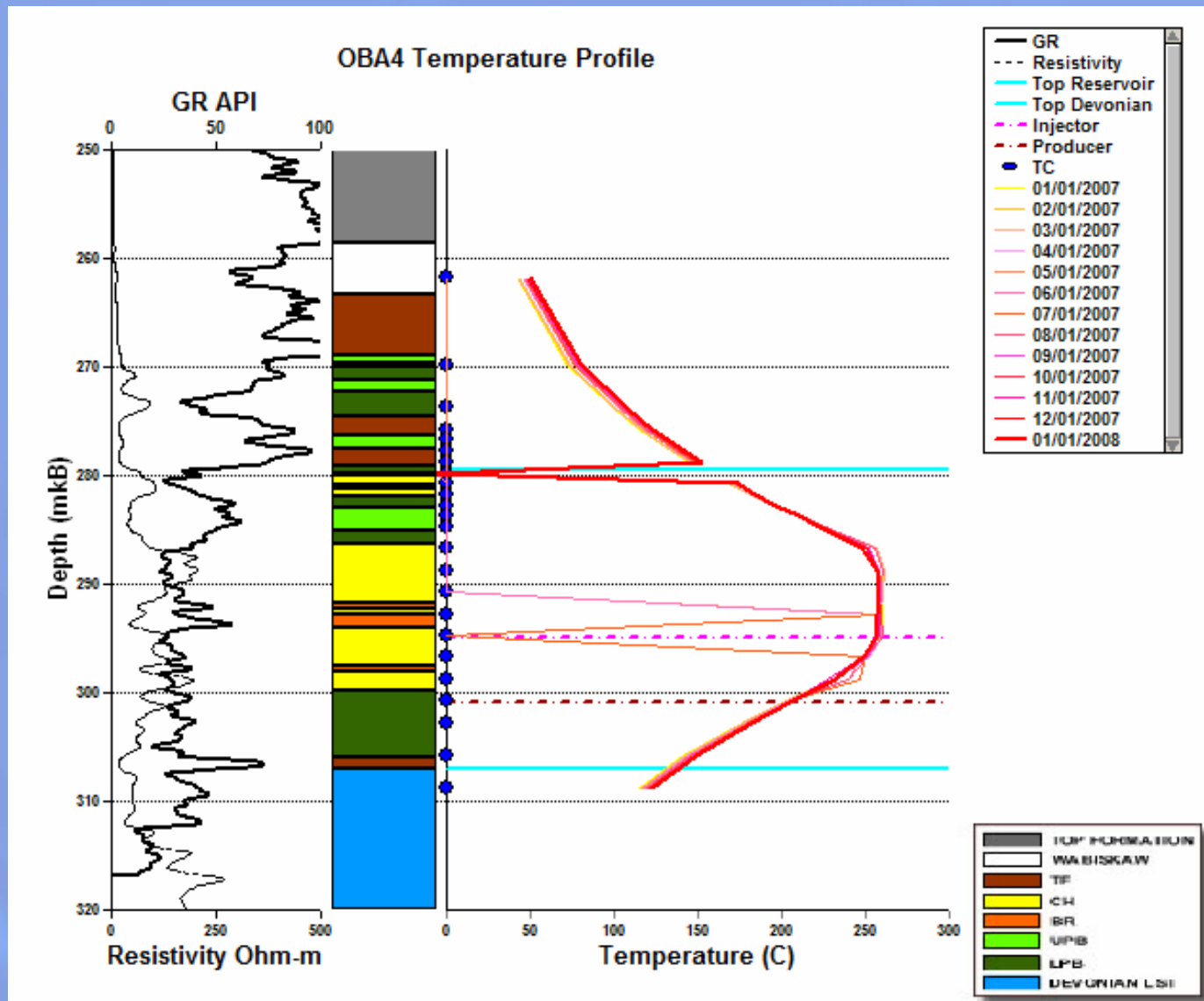


---

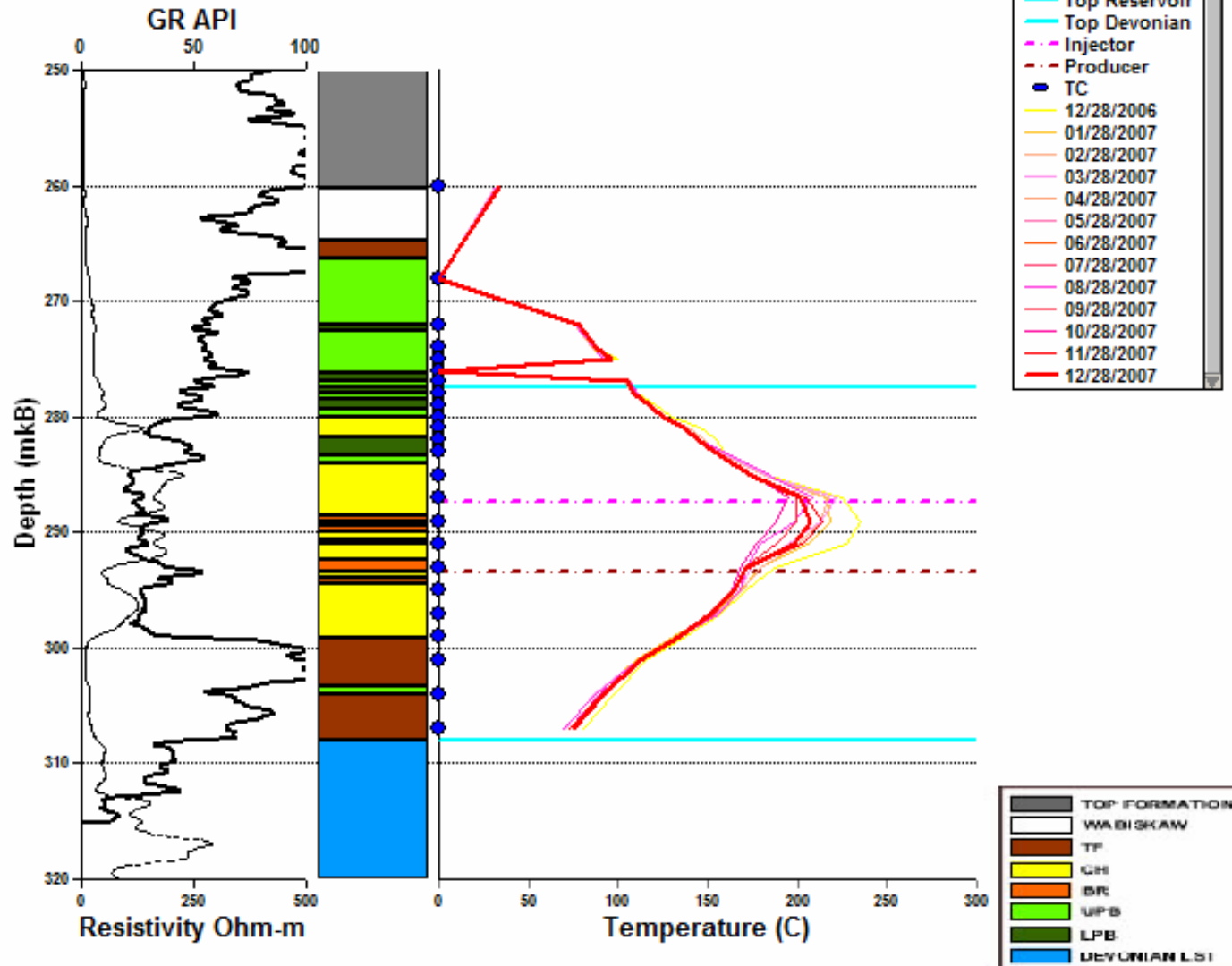
# Appendix

# Thermocouples vs. depth plots (5-d-ii): 16 plots

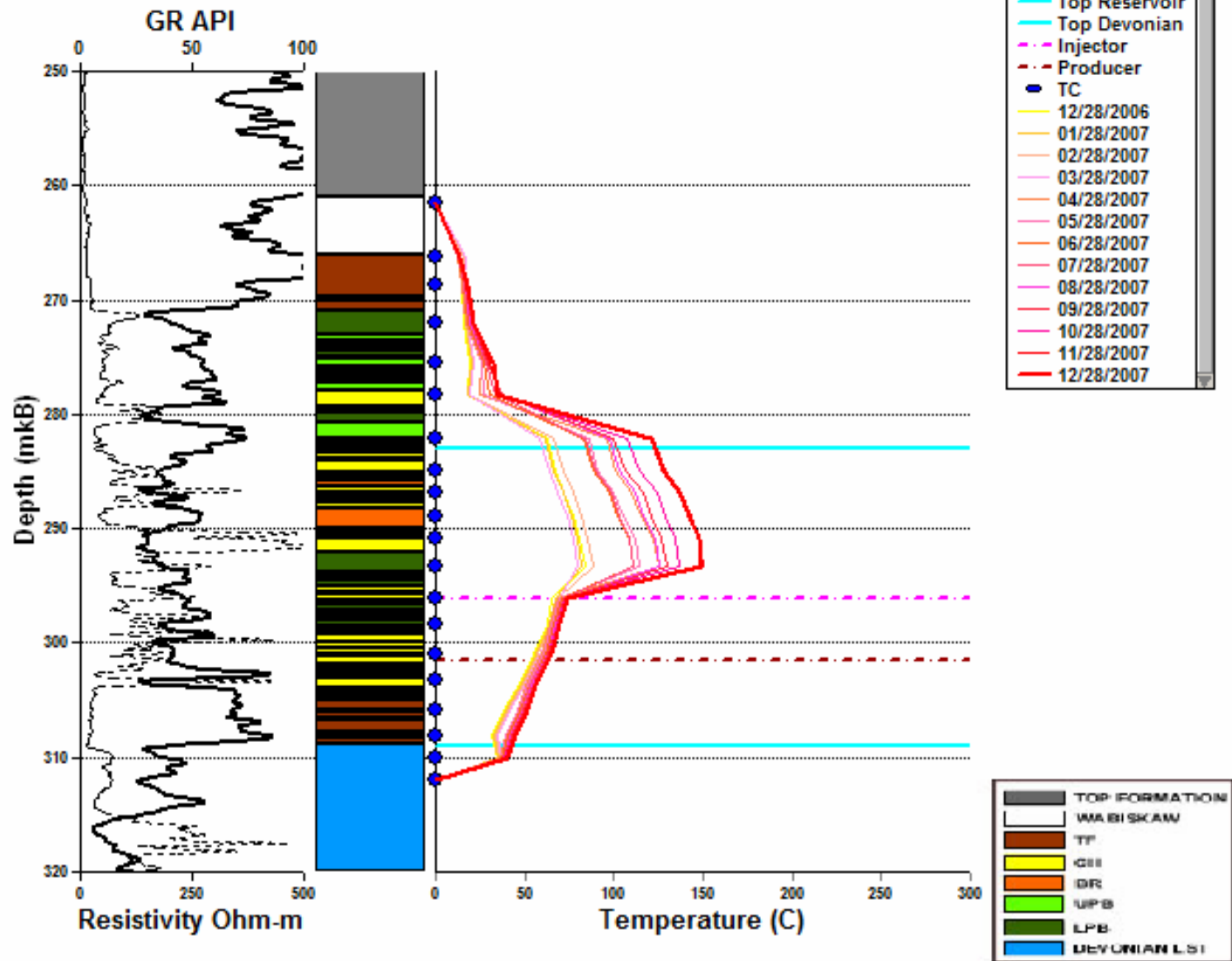


2 Question: one year data or whole history? tabular data will be followed.

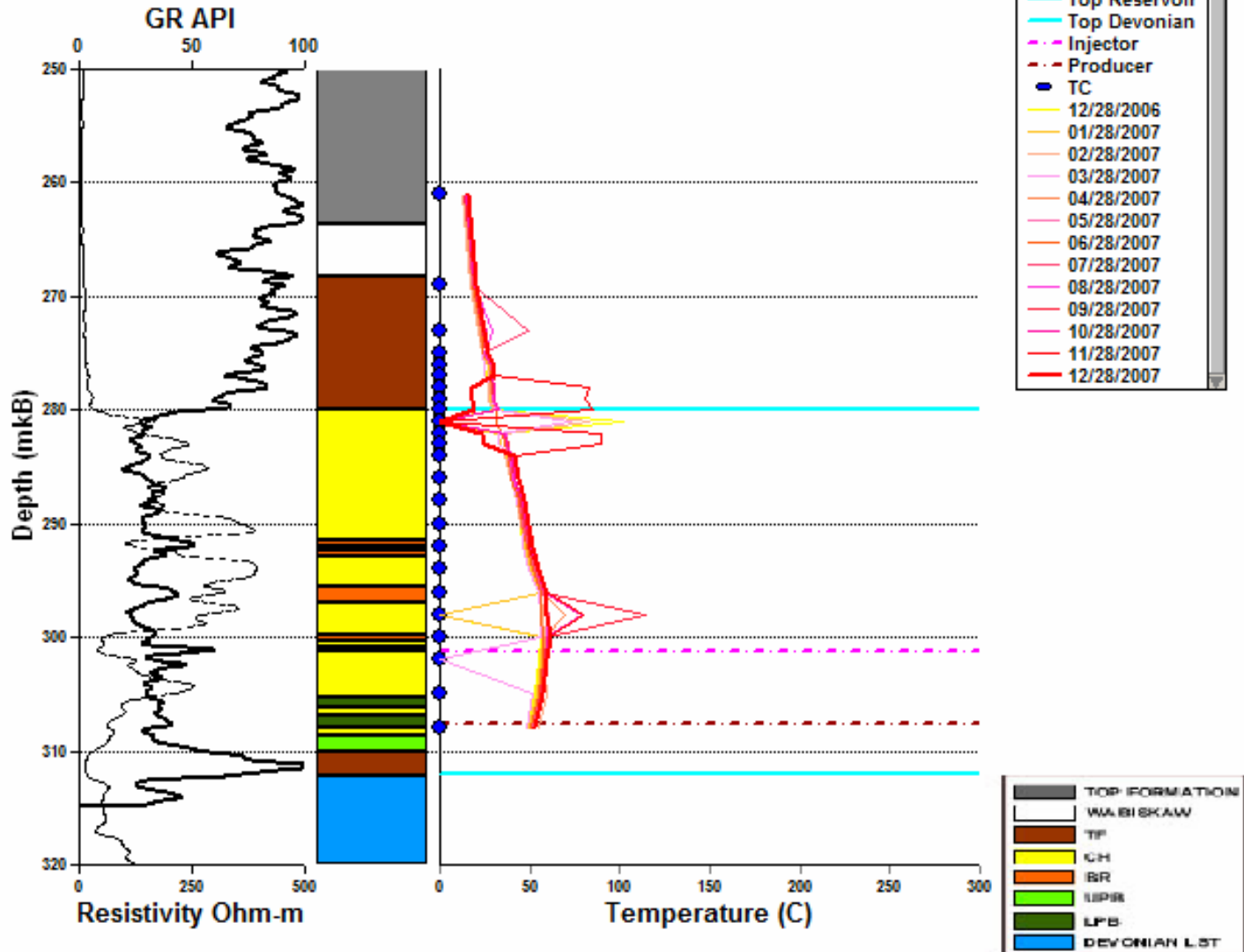
### OBC4 Temperature Profile



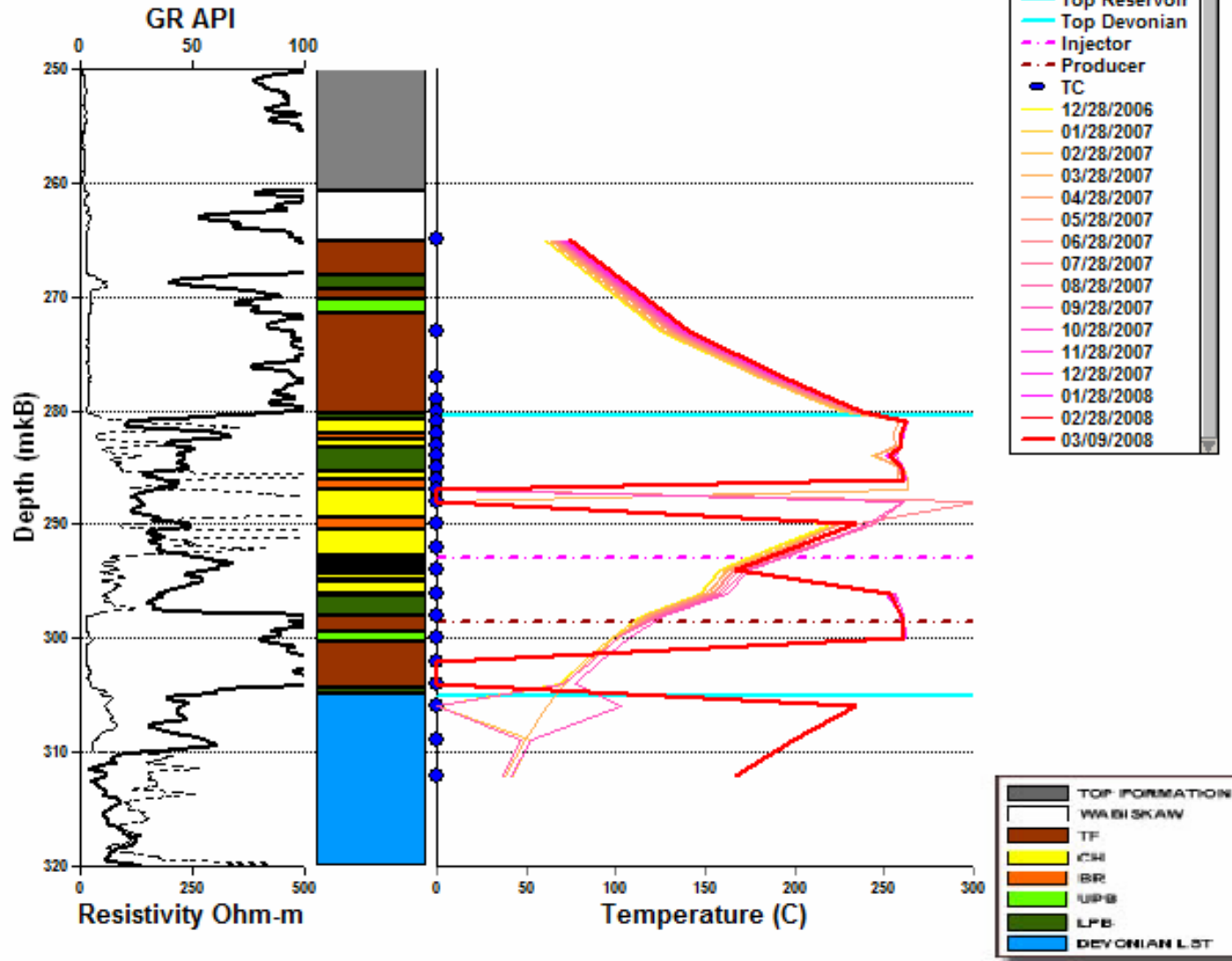
### OBD2 Temperature Profile



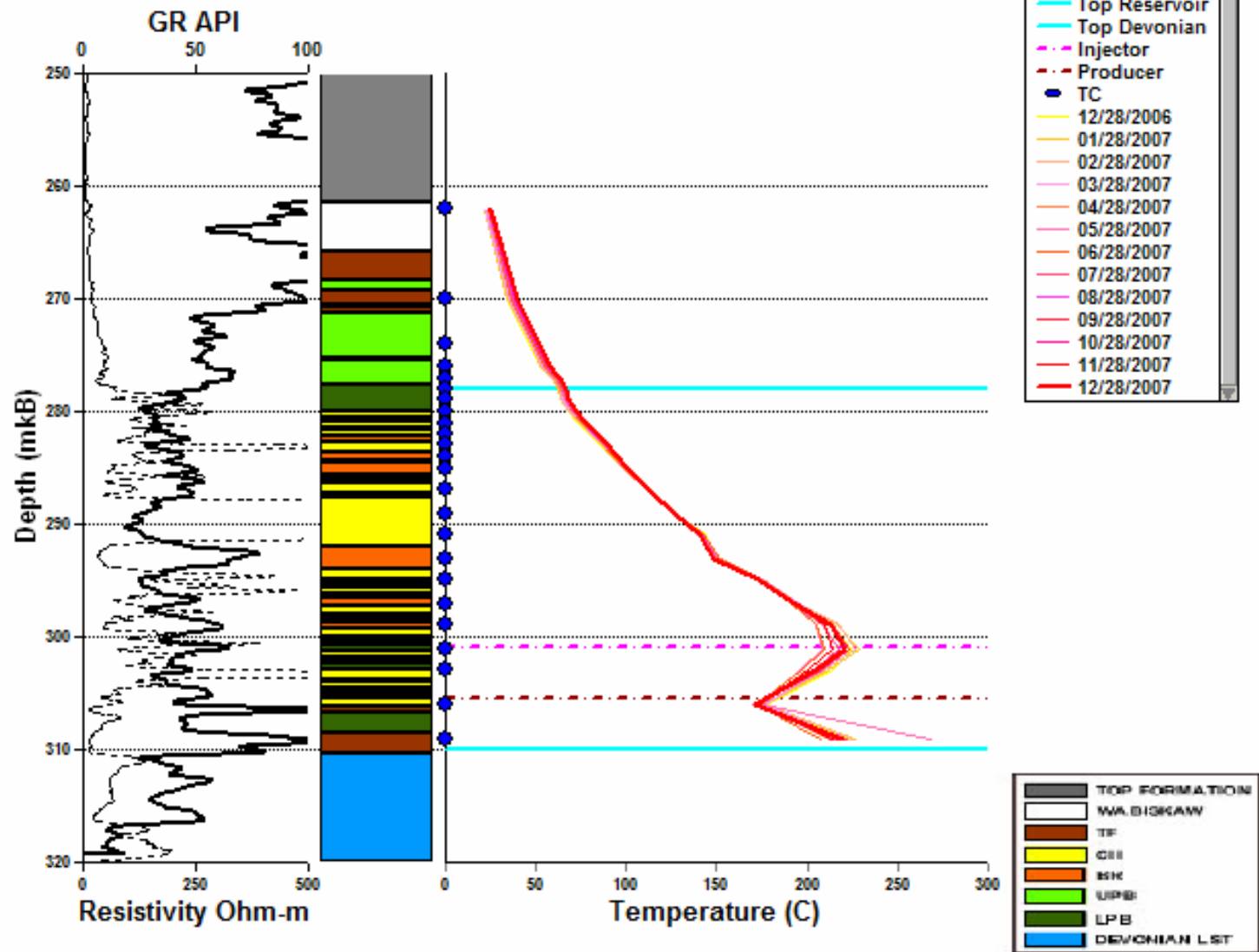
### OBD5 Temperature Profile



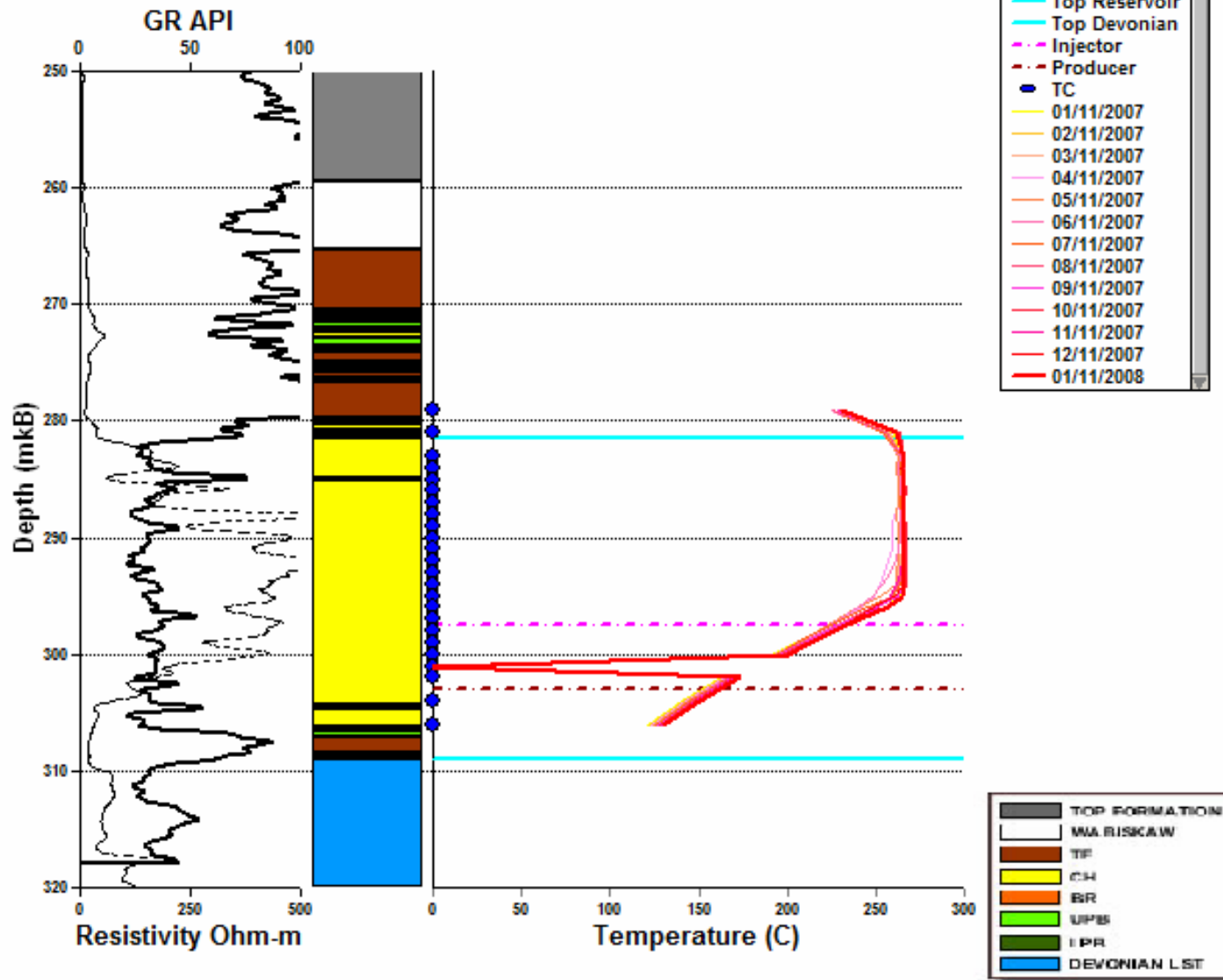
# OBE2 Temperature Profile



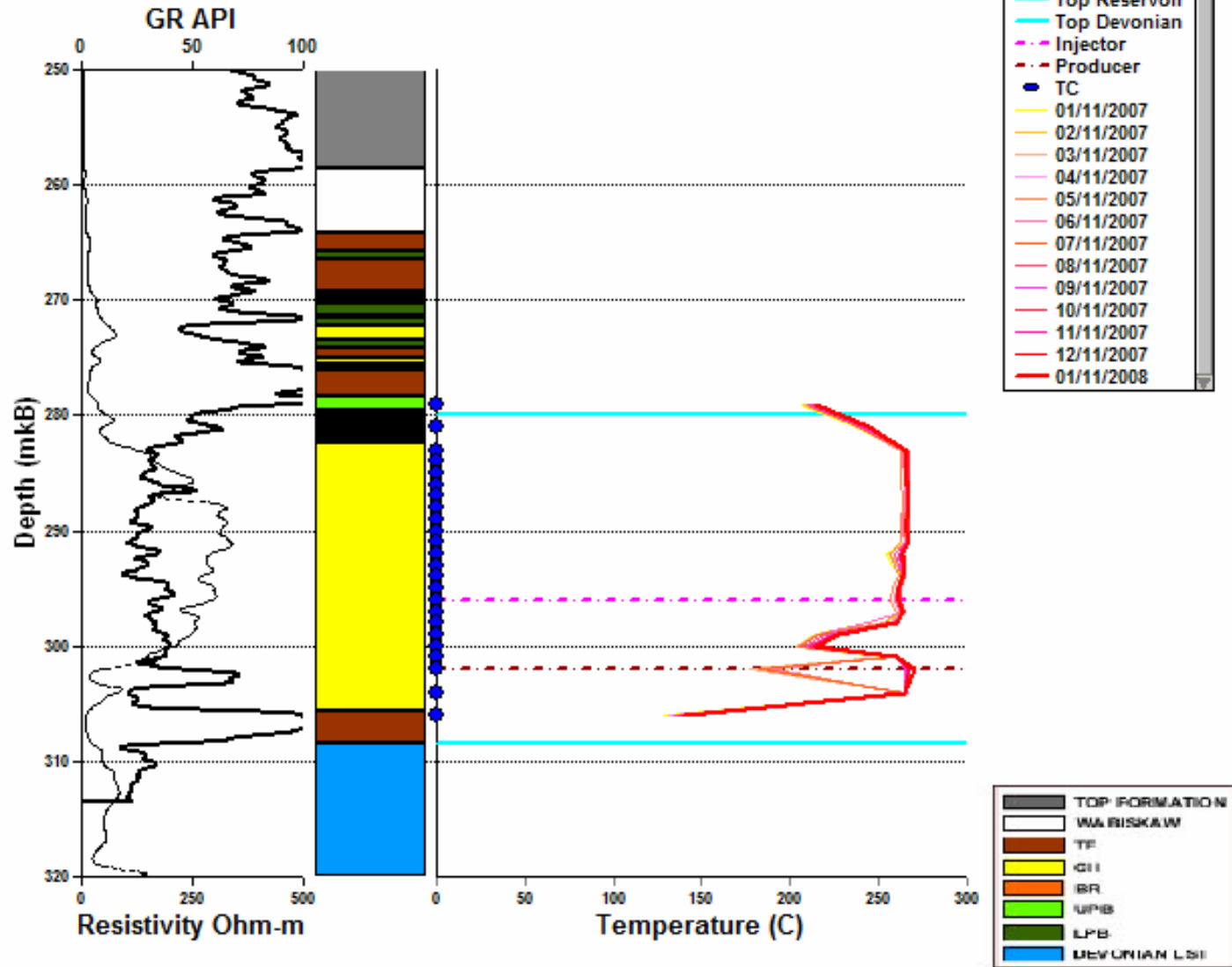
### OBE3 Temperature Profile



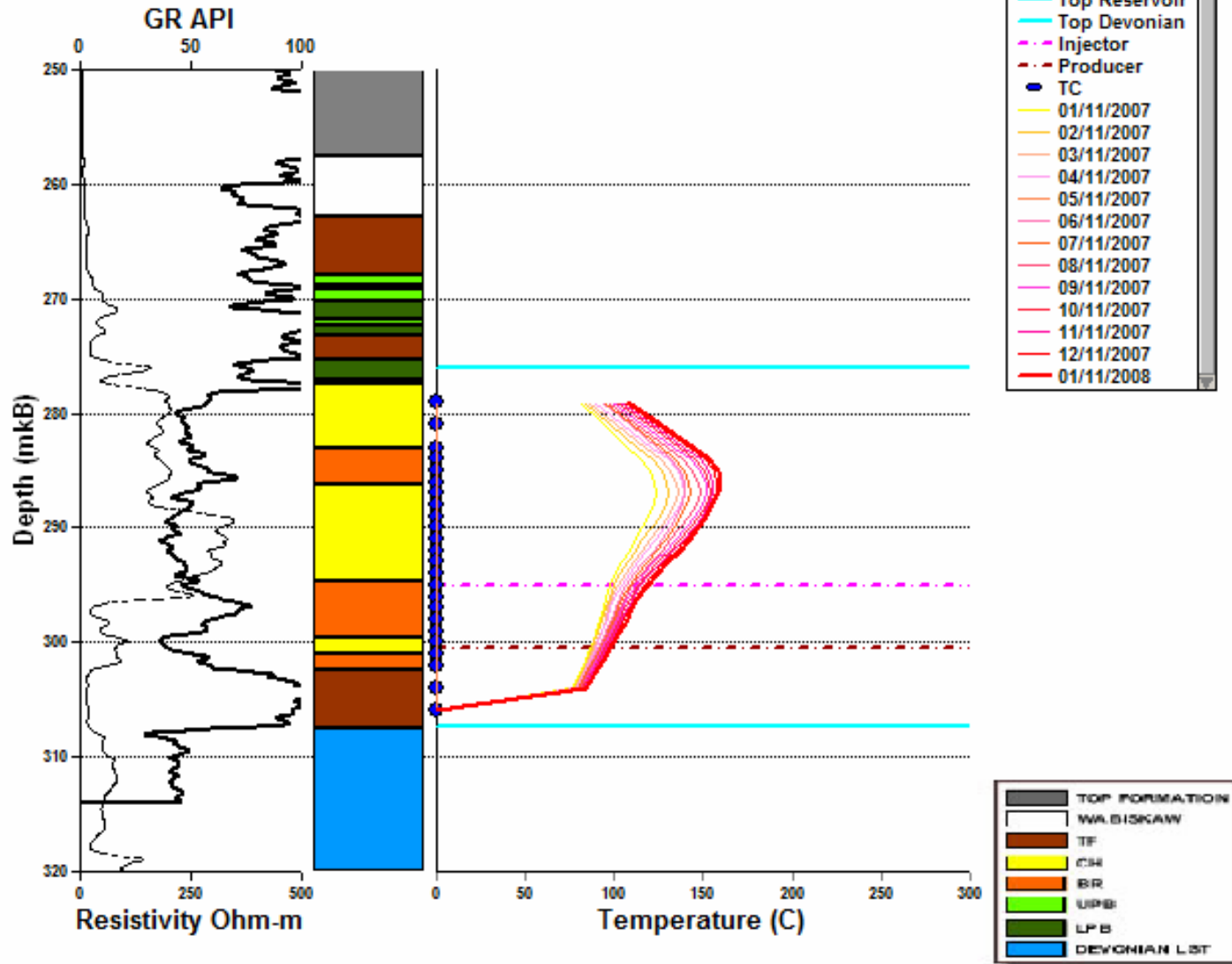
# OBH1 Temperature Profile



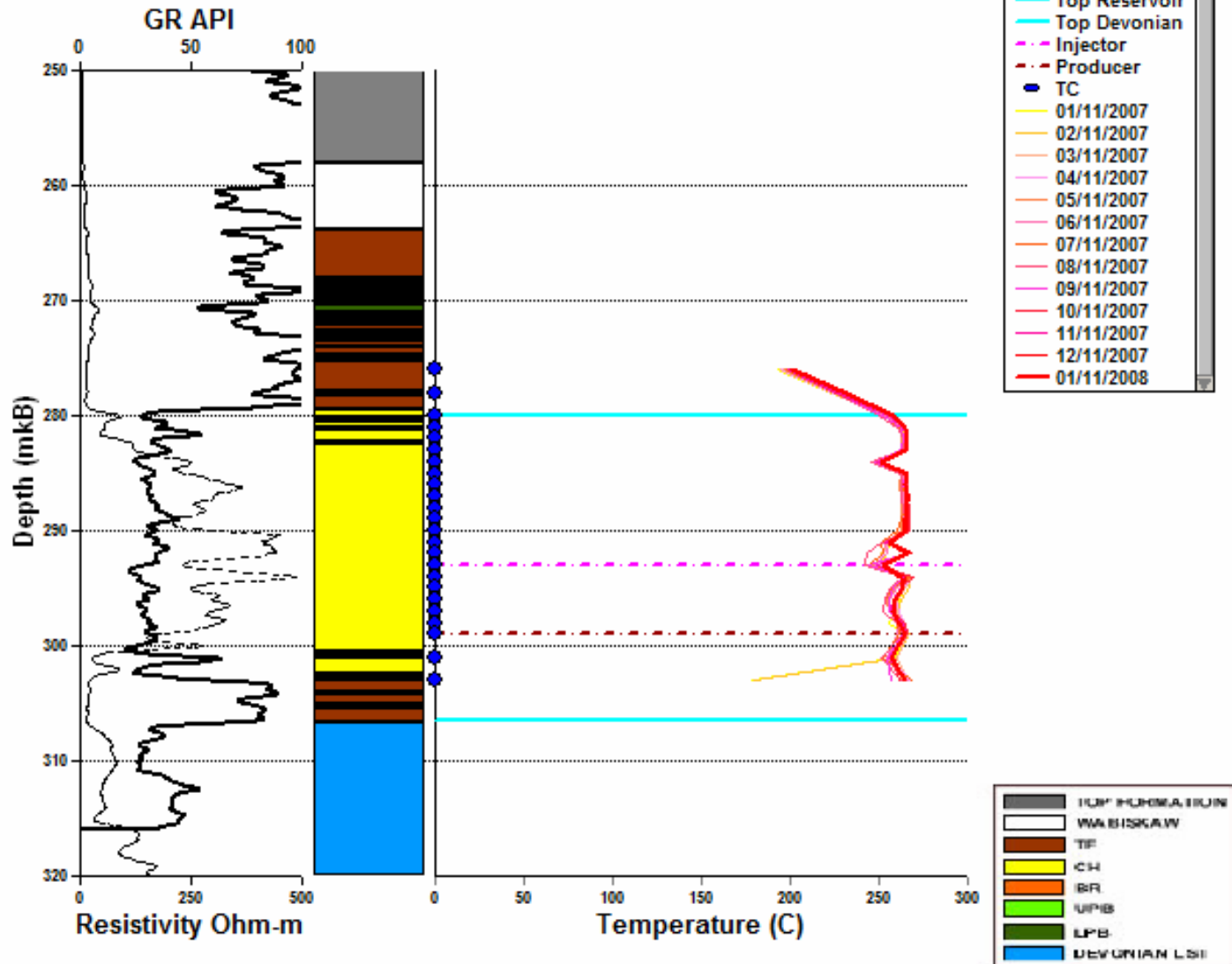
### OBH3 Temperature Profile



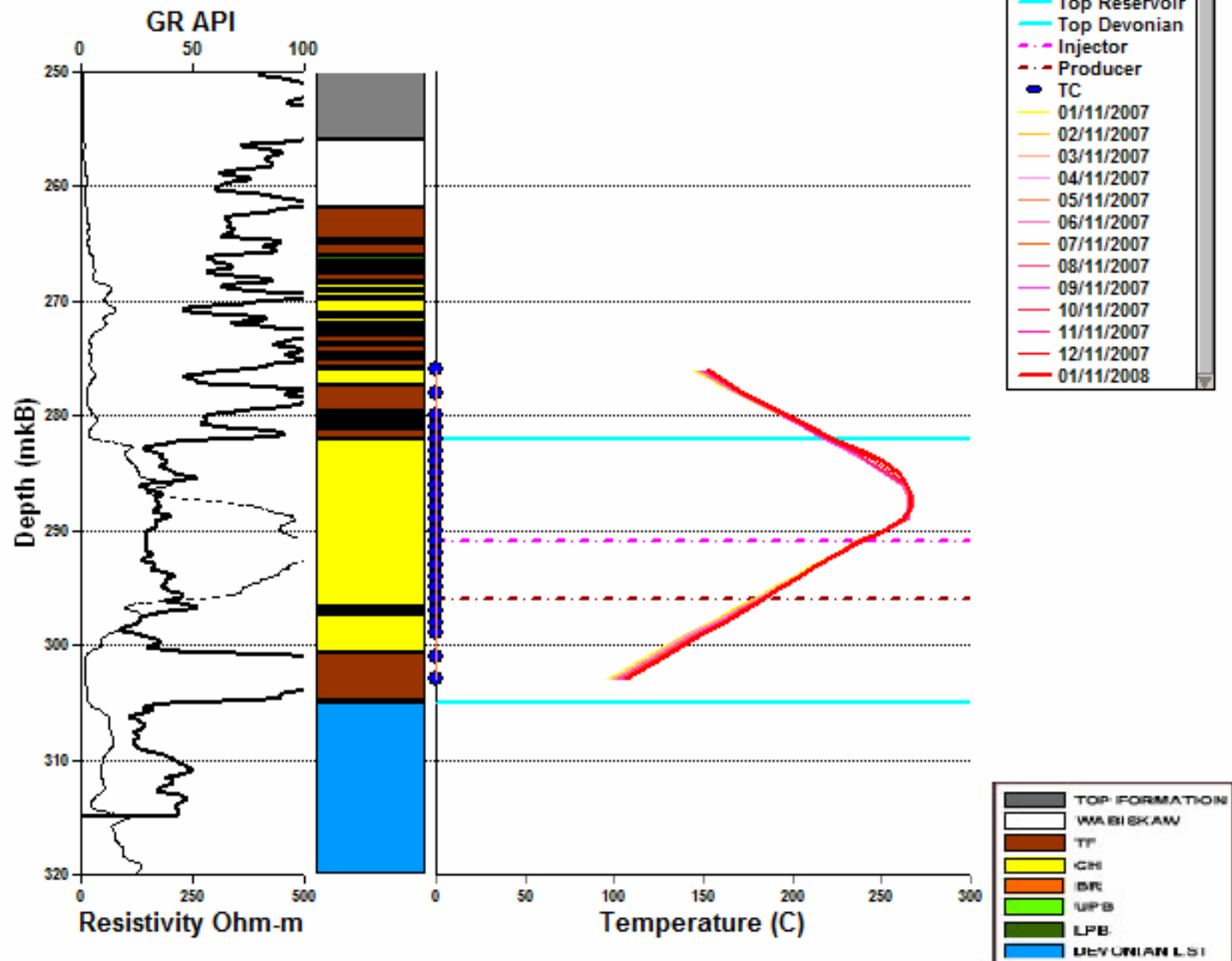
### OBH4 Temperature Profile



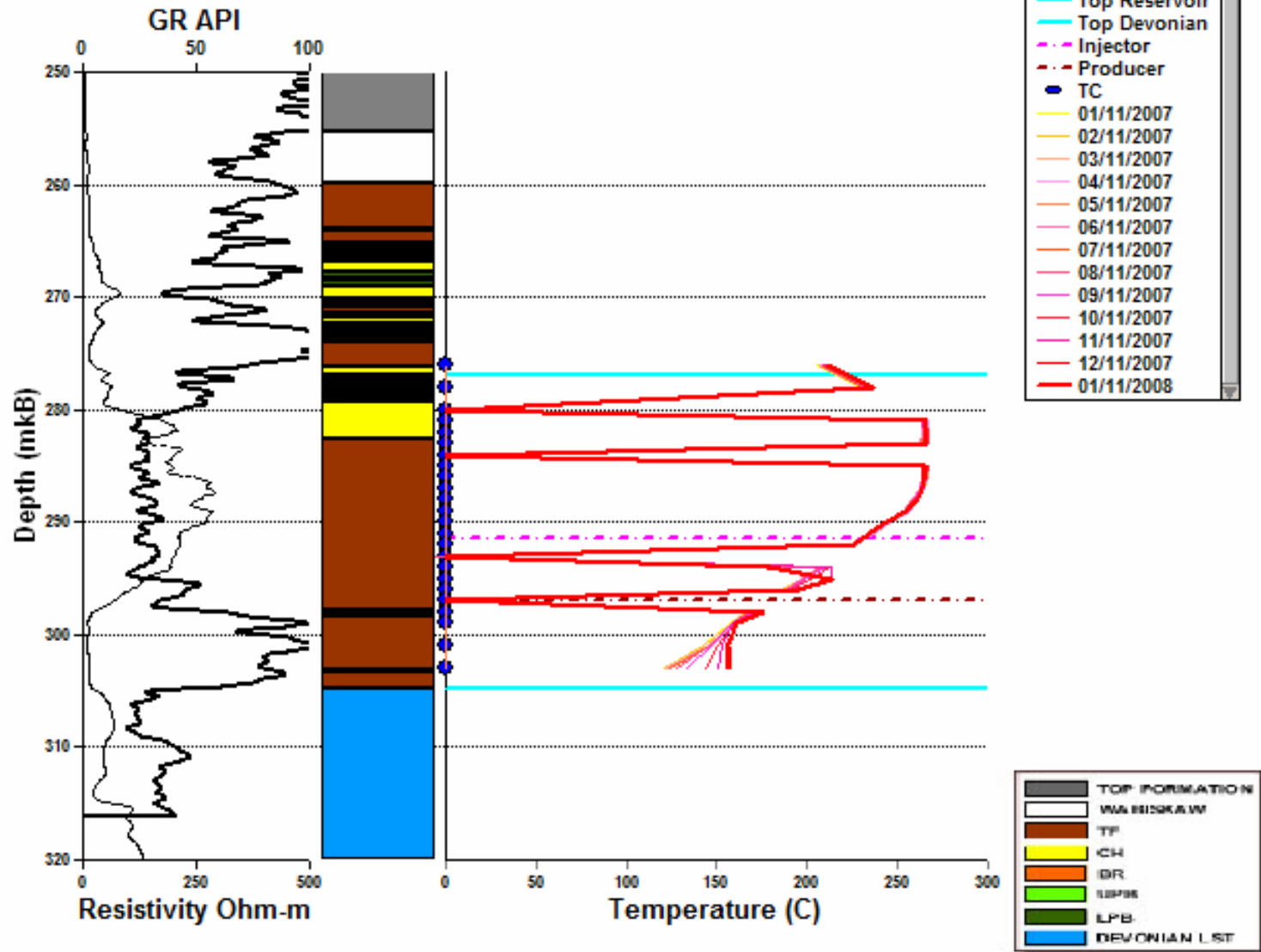
### OBI1 Temperature Profile



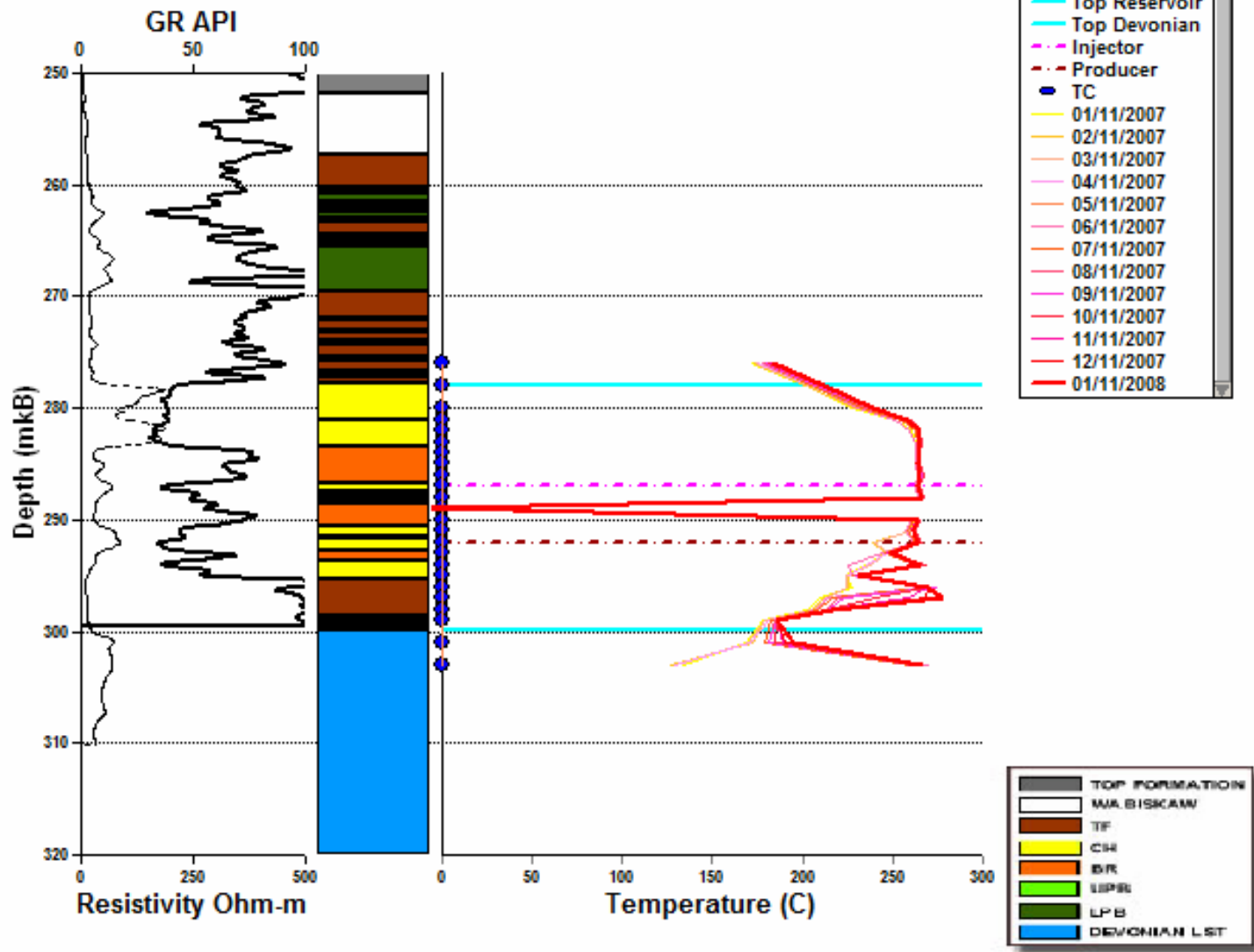
### OBI2 Temperature Profile



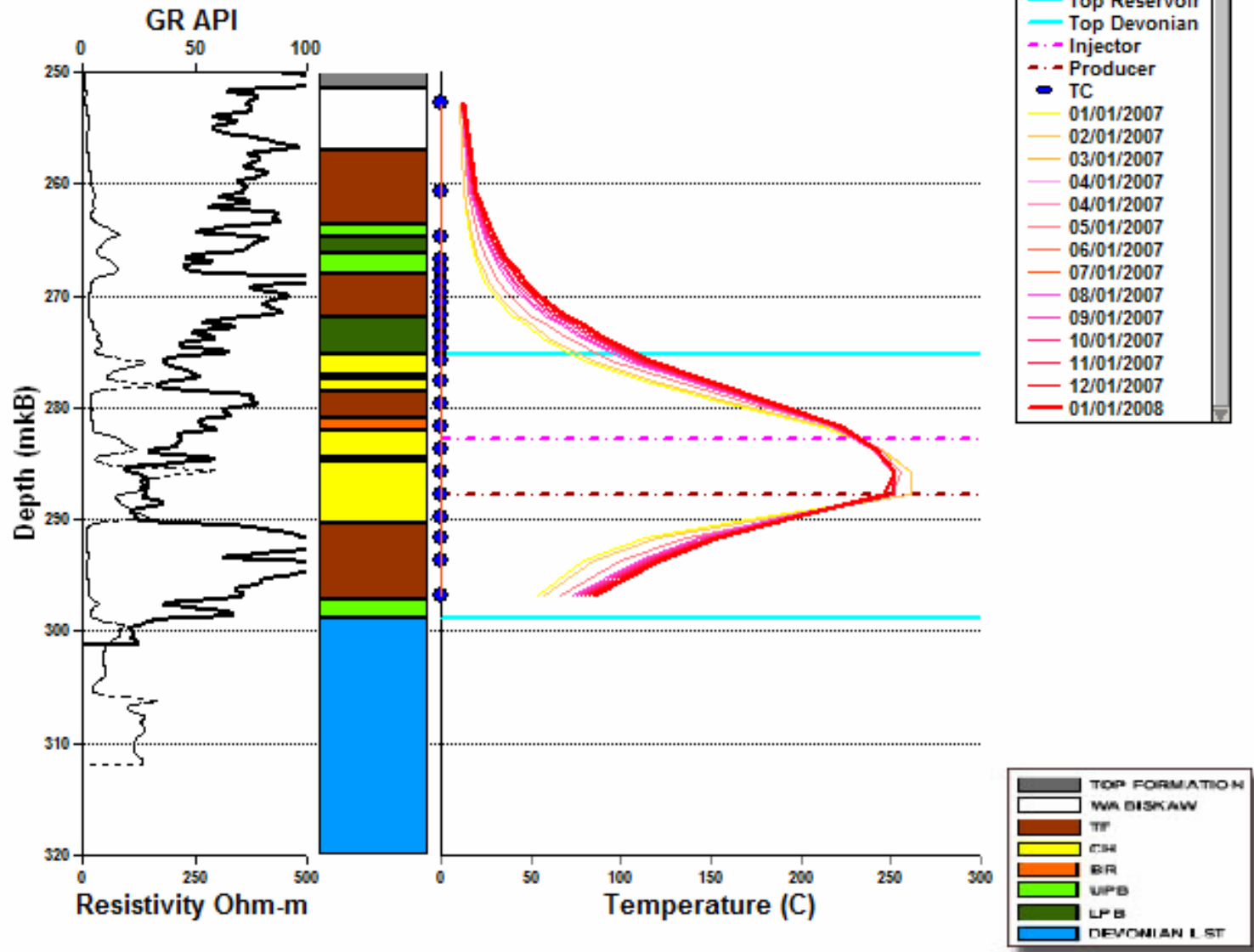
### OBI3 Temperature Profile



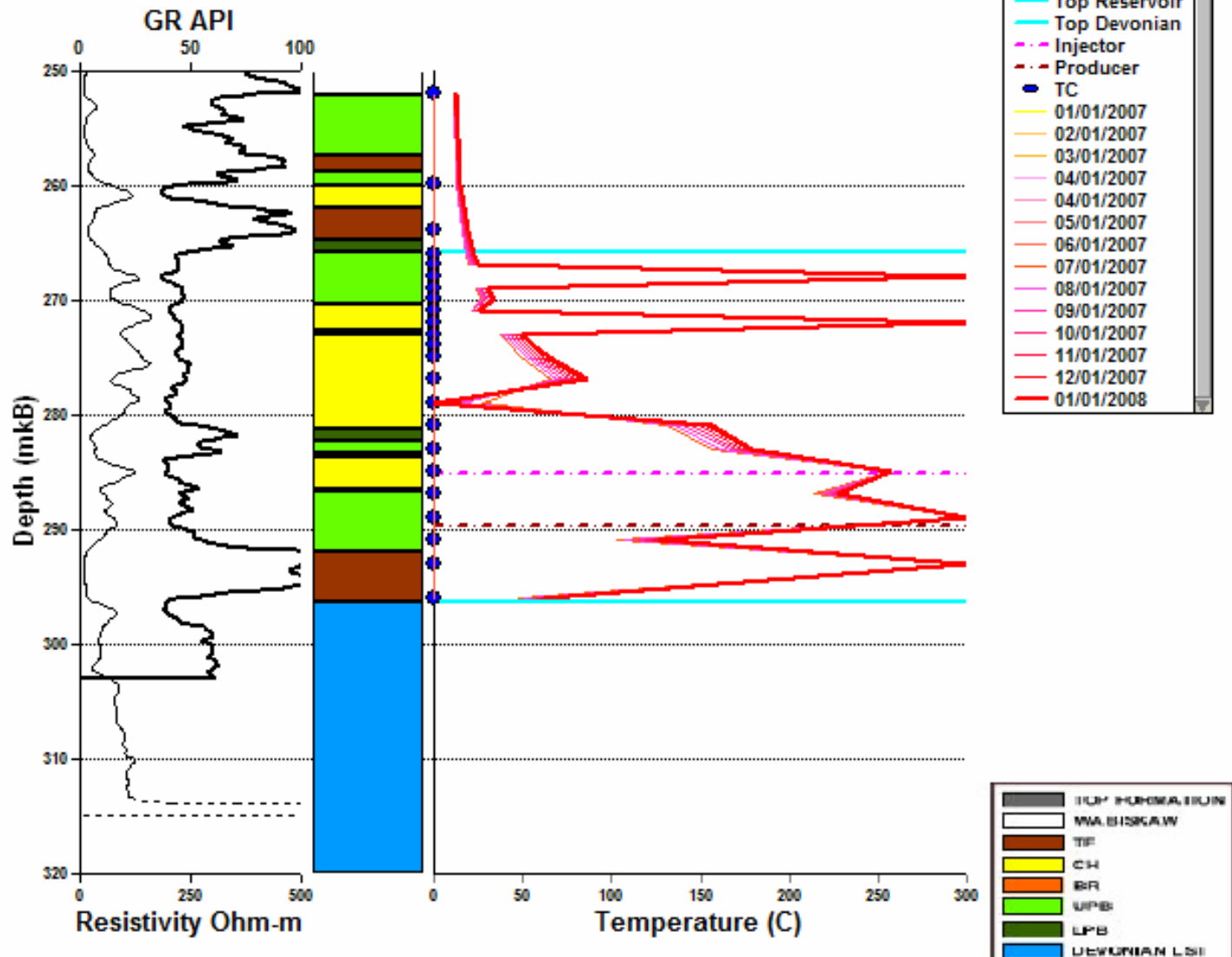
### OBI4 Temperature Profile



# OBO1 Temperature Profile



### OBP3 Temperature Profile



## Observation Well Location

16 Active Observation Wells & Locations	
Observation Wells	OB Locations
OBA4	4.5m East from Middle
OBC4	2.9m West from Middle
OBD2	37m East from (Mid-Toe) of E-Well
OBD5	19.6m West from Heel
OBE2	31.2m West from Toe
OBE3	3.8m West from Middle
OBH1	12.2m South from Heel
OBH3	6.1m North from Middle
OBH4	6.5m North from Mid-Toe
OBI1	13.1m South from Heel
OBI2	23.7m South from Mid-Toe
OBI3	6.8m North from Middle
OBI4	2.0m North from Toe
OBO1	
OBP3	
OBQ4	

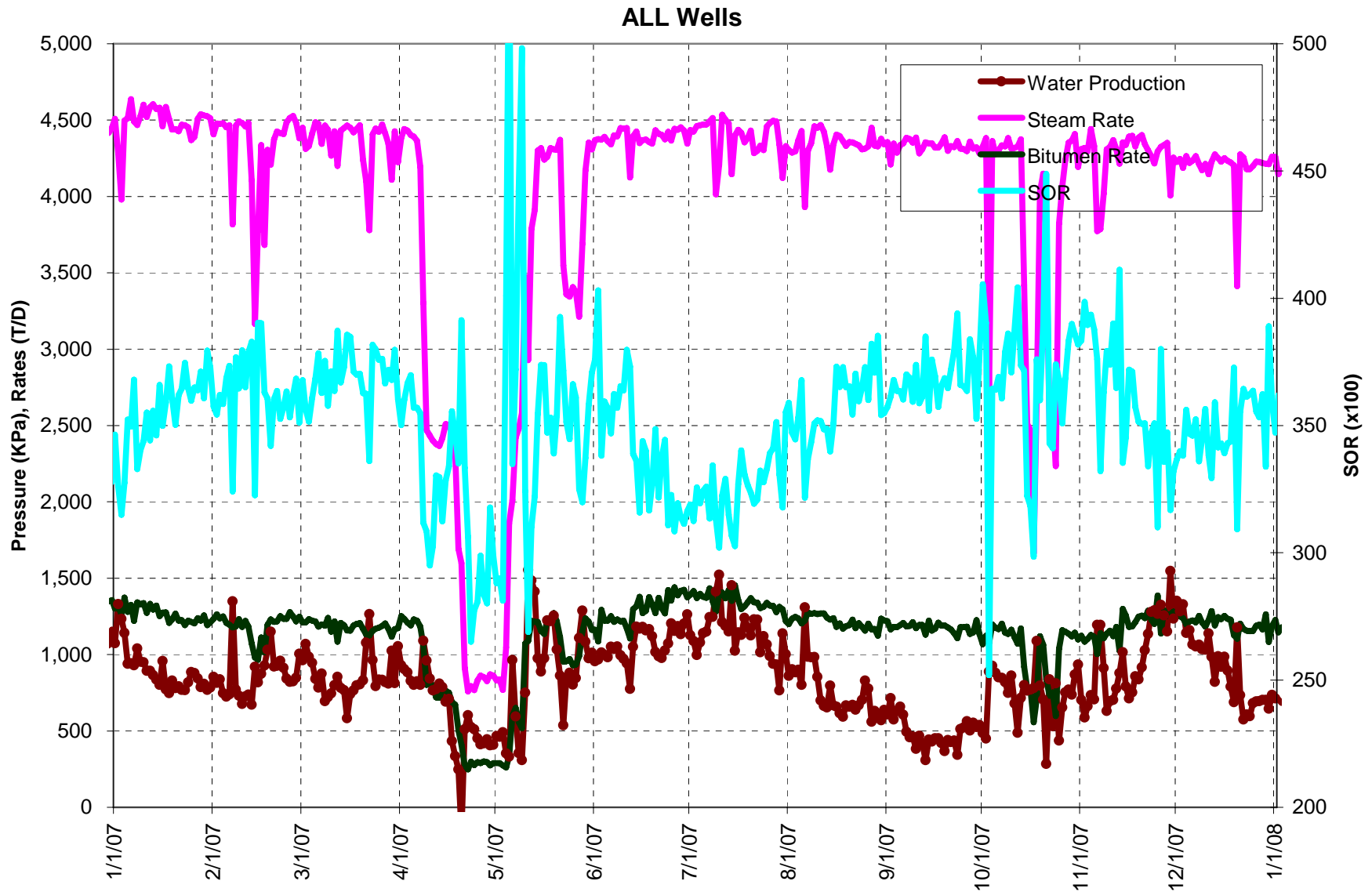
# Injection Pressures

2007 Average Injection Pressures

	A Well		B Well		C Well		D Well		E Well		H Well		I Well		J Well	
	Toe	Heel	Toe	Heel	Toe	Heel	Toe	Heel	Toe	Heel	Toe	Heel	Toe	Heel	Toe	Heel
January	4779	4787	4700	4700	4613	4996	4800	4804	4701	4700	4778	4684	4778	4496	4737	4735
February	4776	4777	4698	4694	4582	4960	4795	4776	4702	4701	4783	4696	4790	4552	4745	4748
March	4796	4797	4700	4699	4587	4987	4787	4790	4685	4690	4849	4746	4856	4592	4813	4827
April	4646	4666	4623	4599	4590	4964	4579	4552	4555	4563	4738	4683	4826	4605	4742	4775
May	4560	4460	4618	4099	4467	4727	4687	4678	4665	4608	4677	4253	4549	4322	4589	4340
June	4685	4704	4621	4612	4541	4914	4801	4800	4700	4700	4720	4637	4691	4486	4640	4657
July	4697	4697	4601	4600	4522	4944	4794	4794	4696	4694	4768	4679	4737	4541	4725	4691
August	4698	4700	4598	4602	4532	4898	4800	4799	4699	4698	4862	4755	4861	4625	4845	4844
September	4700	4701	4600	4599	4547	4900	4796	4800	4700	4697	4930	4812	4936	4663	4931	4920
October	4681	4684	4592	4590	3940	3878	4714	4625	4617	4668	4892	4788	4823	4668	4883	4843
November	4712	4715	4615	4615	4562	4896	4799	4799	4608	4701	4916	4789	4838	4631	4778	4732
December	4679	4697	4600	4603	4576	4893	4765	4798	4690	4702	4869	4778	4870	4604	4857	4855
Average	4701	4699	4630	4584	4505	4830	4760	4751	4668	4677	4815	4692	4796	4565	4774	4747

	K Well		L Well		M Well		N Well		O Well		P Well		Q Well		T Well	
	Toe	Heel	Toe	Heel	Toe	Heel	Toe	Heel	Toe	Heel	Toe	Heel	Toe	Heel	Toe	Heel
January	4806	4581	4830	4817	4859	4834	4857	4858	4651	4650	4651	4649	4651	4650	-	-
February	4799	4709	4804	4803	4867	4843	4847	4854	4648	4645	4650	4647	4648	4648	-	-
March	4862	4739	4793	4793	4938	4913	4926	4936	4643	4642	4645	4644	4651	4651	-	-
April	4811	4680	4796	4794	4782	4761	4882	4876	4581	4603	4650	4641	4645	4644	-	-
May	4594	4498	4688	4672	4696	4576	4682	4580	4138	3938	4173	4016	4118	3946	-	-
June	4723	4550	4833	4805	4770	4677	4778	4763	3926	3909	4124	4119	3972	3948	-	-
July	4754	4623	4795	4793	4797	4784	4839	4838	3916	3919	4176	4179	4033	4029	-	-
August	4789	4689	4836	4812	4815	4814	4845	4838	3898	3897	4167	4163	4007	4001	-	-
September	4825	4725	4850	4828	4849	4850	4854	4860	3903	3901	4200	4200	4002	4003	-	-
October	4864	4794	4788	4798	4804	4796	4749	4776	3887	3888	4180	4174	4008	3999	-	-
November	4906	4897	4808	4809	4812	4811	4846	4848	3896	3896	4146	4142	3998	3998	4990	5178
December	4702	4700	4895	4894	4799	4798	4843	4848	3896	3899	4150	4150	3997	3998	5183	5168
Average	4786	4682	4810	4802	4816	4788	4829	4823	4165	4149	4326	4310	4228	4210	5087	5173

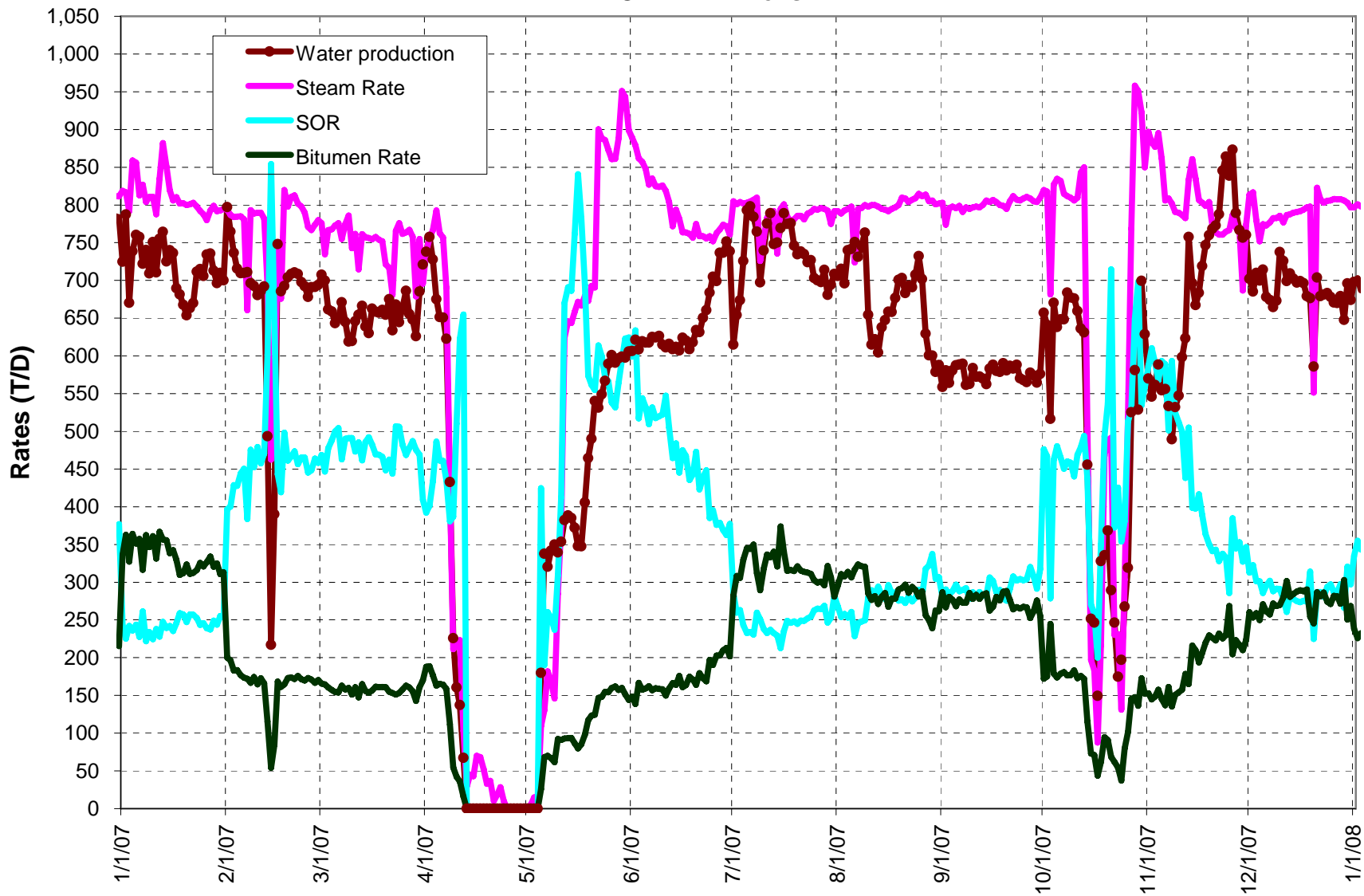
# Well pad performance (7-h)



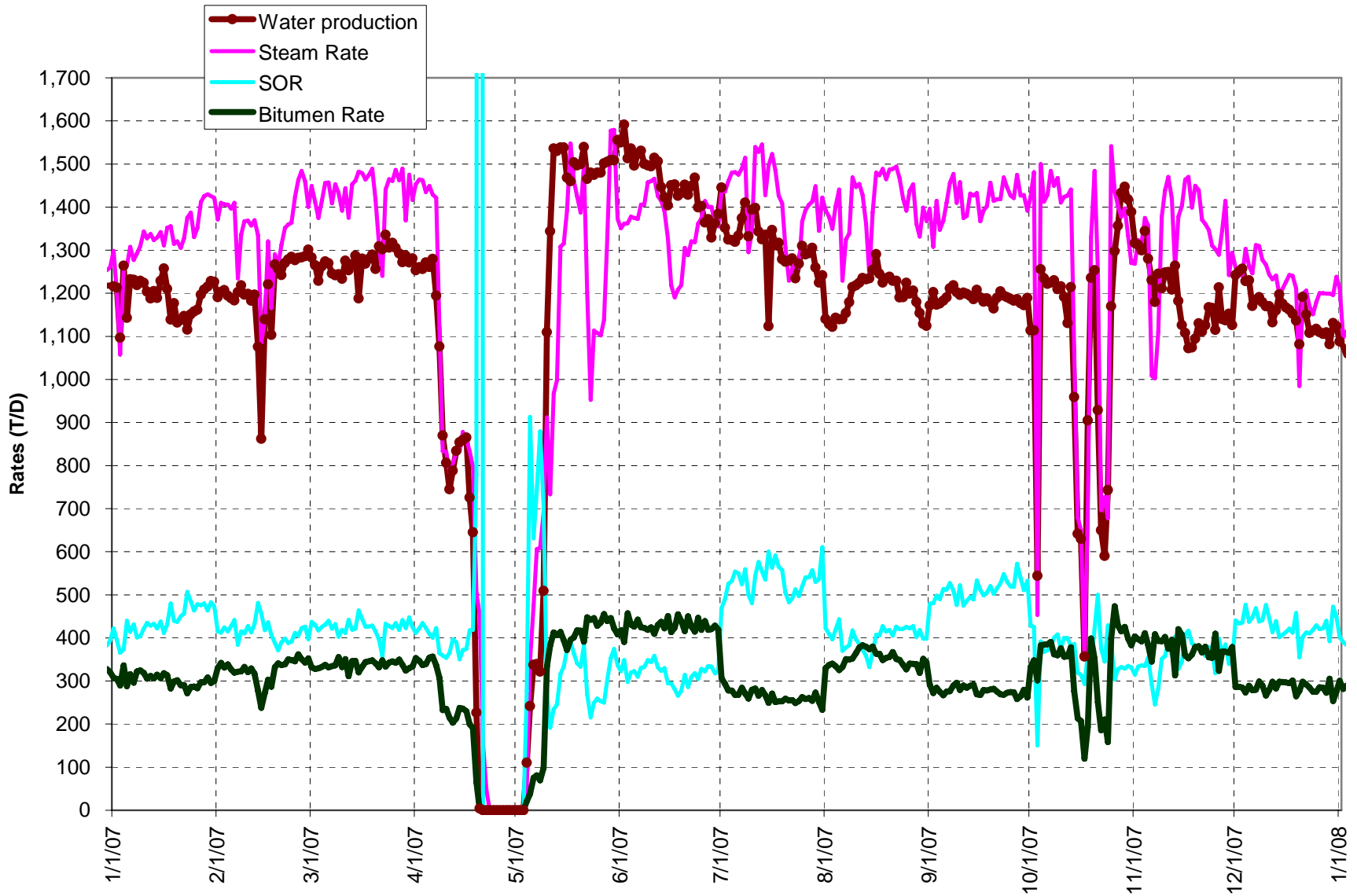
### A + B Wells



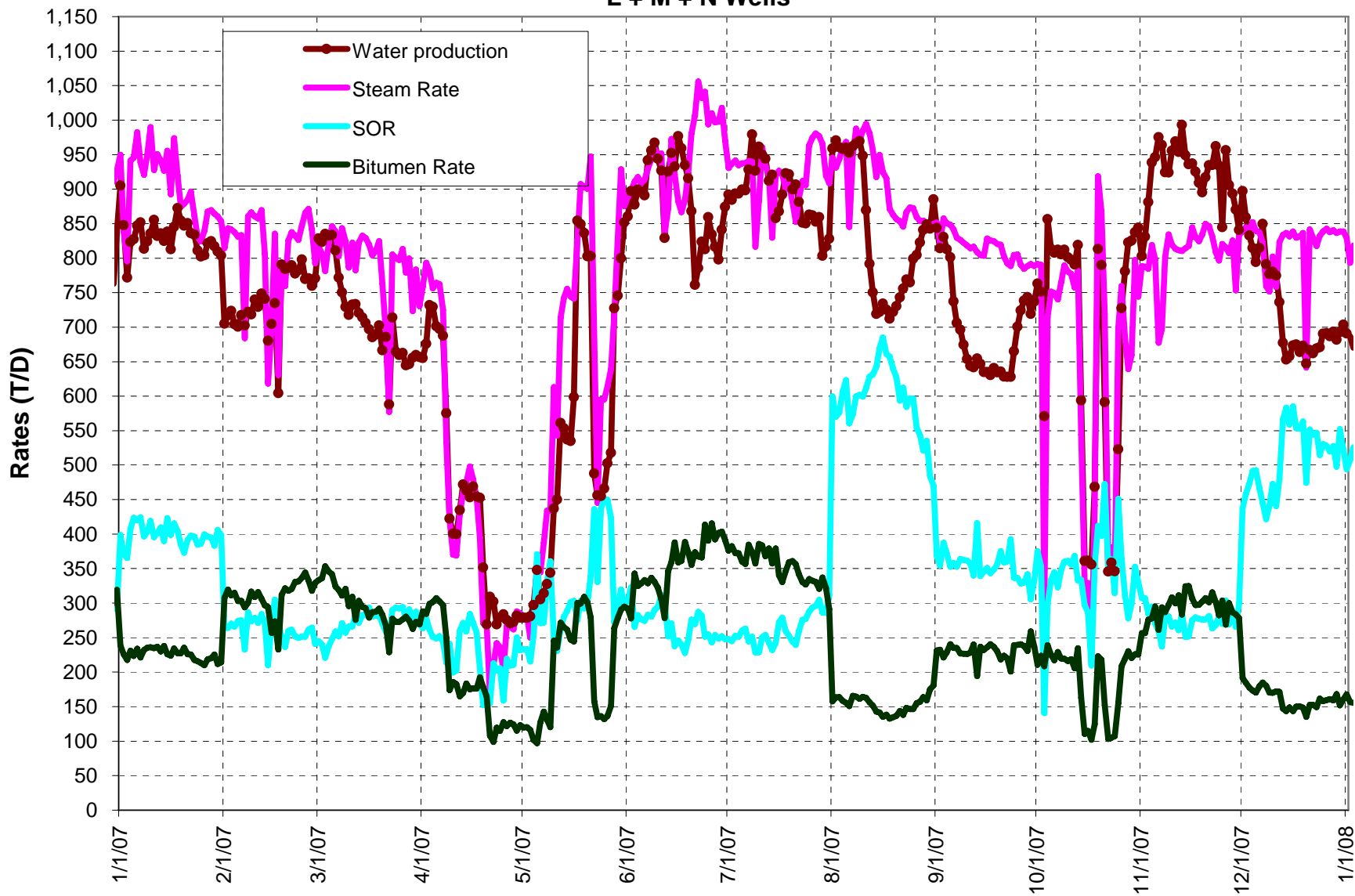
### C + D + E Wells



### H + I + J + K Wells



### L + M + N Wells



### O + P + Q Wells

